



LAC Women's Army Corps Dormitory

Community Information Gathering Session

November 2021



LOS ALAMOS
where discoveries are made

M4
1 of 11

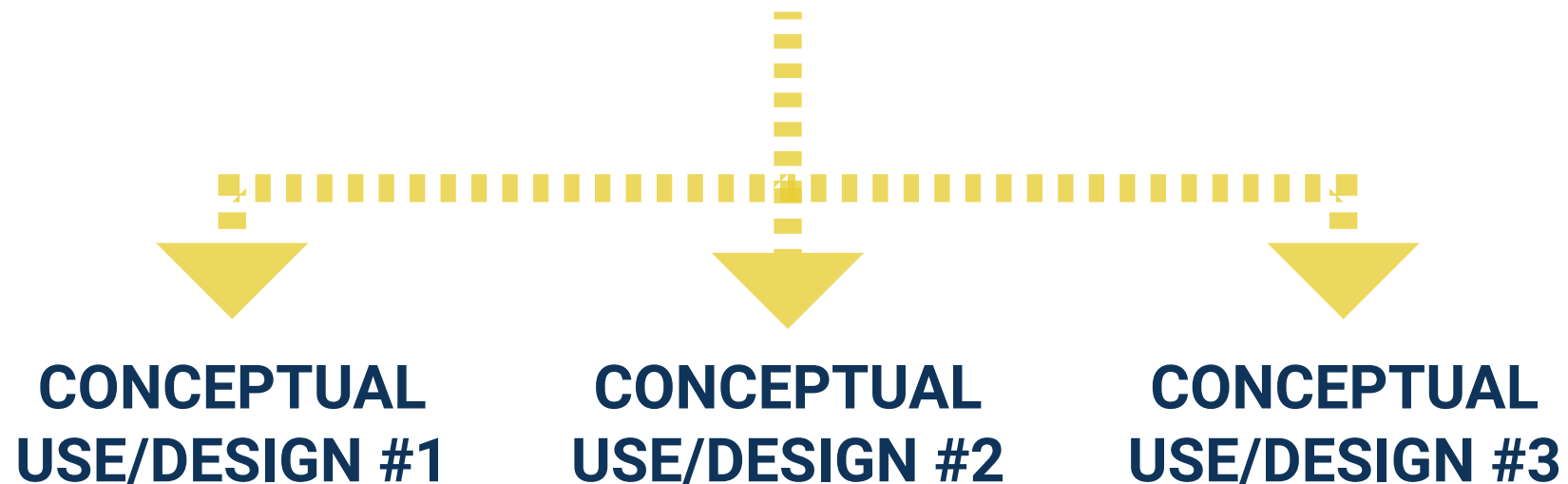
MHA will work with the community and stakeholders to craft a
Project Mission Statement

+

Project Goals

for the Women's Army Corps Dormitory Building, Site, and Use.

1. Project Open House for Community members
2. Meetings with Committees and Stakeholders
3. Online Informational Platforms



LAC Women's Army Corps Dormitory

The Process



COUNTY BOARDS + COMMITTEES

Parks + Recreation

Historic Preservation

Transportation

STAKEHOLDERS

Manhattan Project
National Historical Park

Tourism Implementation
Task Force

Historical Society

Fire Marshall

Valles Caldera + Bandelier
National Monument

Community Services

Economic Development

Sustainability Task Force

Chamber/MainStreet

Neighbors and Community at large

LAC Women's Army Corps Dormitory

Stakeholders

WAC DORM (CURRENTLY OUTSIDE PARK)

EXISTING MANHATTAN PROJECT NAT'L HISTORICAL PARK WALKING TOUR

FULLER LODGE

1 This grand building was built in 1928 as the Ranch School dining hall. It also served as nurses, staff, and guest quarters. Named for Edward P. Fuller, a staff member at the Ranch School, it is made of 771 massive pine logs, personally selected by architect John Gaw Meem and Ranch School director A.J. Connell. Fuller Lodge still serves as a public cultural event center.

MEMORIAL ROSE GARDEN

2 In 1947, the rose garden was started here by members of the Los Alamos Garden Club. At that time there was no cemetery, so rose bushes were planted in memory of those who died in Los Alamos. The garden club actively maintains the Rose Garden. It also serves as a popular place for weddings and other ceremonies. A Blue Star Memorial Byway site, and a Los Alamos National Laboratory memorial to those killed in the line of duty are located here.

ROMERO CABIN

3 Homesteading began on the Pajarito Plateau in the late 1800s. The Romero family built this cabin in 1913 on a nearby mesa. Like all homesteads on the plateau, it was acquired by the U.S. government for the Manhattan Project. In 1984, the cabin was moved downtown and rebuilt in 2010. It is open to the public on select days and during guided tours.

FIRE CACHE

4 Local homesteader Severo Gonzales Sr. built this stone building in the 1920s for the Los Alamos Ranch School to house firefighting equipment. Fires have always been a danger on the Pajarito Plateau due to droughts, log construction, and even wood burning stoves. The building is made of stone from the nearby Ancestral Pueblo Site.

THE BIG HOUSE

5 Across the street from the Romero Cabin was the site of the original main building for the Los Alamos Ranch School. The Big House design inspired the style of Fuller Lodge and other Ranch School structures. Students slept there year-round on screened porches as part of a physically, as well as academically, challenging education. The Big House contained a library and, during the war years, the non-broadcast radio station, KRS. In 1943, it also housed some of the first scientists who shared its one bathroom.

ANCESTRAL PUEBLO SITE

6 In roughly 1225 CE, this site was home to a group of Tewa-speaking people, ancestors of Pueblo groups now living along the Rio Grande. They built with blocks of ruff, the welded volcanic ash common in this area. Some rooms were for cooking and sleeping, while others were for storage.

BATHTUB ROW

7 These cottages were built for the Ranch School as residences and classrooms. Having the only bathtubs in town, these homes quickly acquired the name "Bathtub Row." J. Robert Oppenheimer lived in the house at the corner of Bathtub Row and Peach Street. This home is a private residence, and visitors are not allowed.

BATHTUB ROW (CONTD.)

7 The house next to the Oppenheimer house, now known as the Hans Bethe House, displays Cold War exhibits as part of the History Museum campus.

PERFORMING ARTS CENTER

8 The building near the corner of 15th and Nectar Streets was built as the Manhattan Project East Cafeteria. It is one of the few GI buildings left from WWII. Used by the growing post-war community as a recreation hall, it started serving as a playhouse in 1971, operated by the Los Alamos Little Theatre, a non-profit drama troupe.

POWER HOUSE

9 The building housing the diesel generators for the Los Alamos Ranch School was built in the early 1920s. In 1944, George Kistiakowsky, an explosives expert, and his new bride moved into it. As a joke, his friends carved a half-moon in the door of the attached shed the Army built. It is now used as administrative office space for the National Park Service.

HOPPER FIREPLACE

10 These rocks were part of the fireplace in the homestead cabin of William Macdonald "Mack" Hopper, who settled here in 1908. The chimney, probably made of stone from an Ancestral Pueblo site and put together with a mud/clay mortar, was rebuilt in 2016 for the Los Alamos Historical Society as an Eagle Scout project.

TOUCH THE SKY SCULPTURE

11 In May 2000, the county and adjacent lands were devastated by the 40,000-acre Cerro Grande wildfire. Nearly 400 Los Alamos homes were destroyed. This sculpture was erected a year later, commemorating the fire and community re-building.

ASHLEY POND

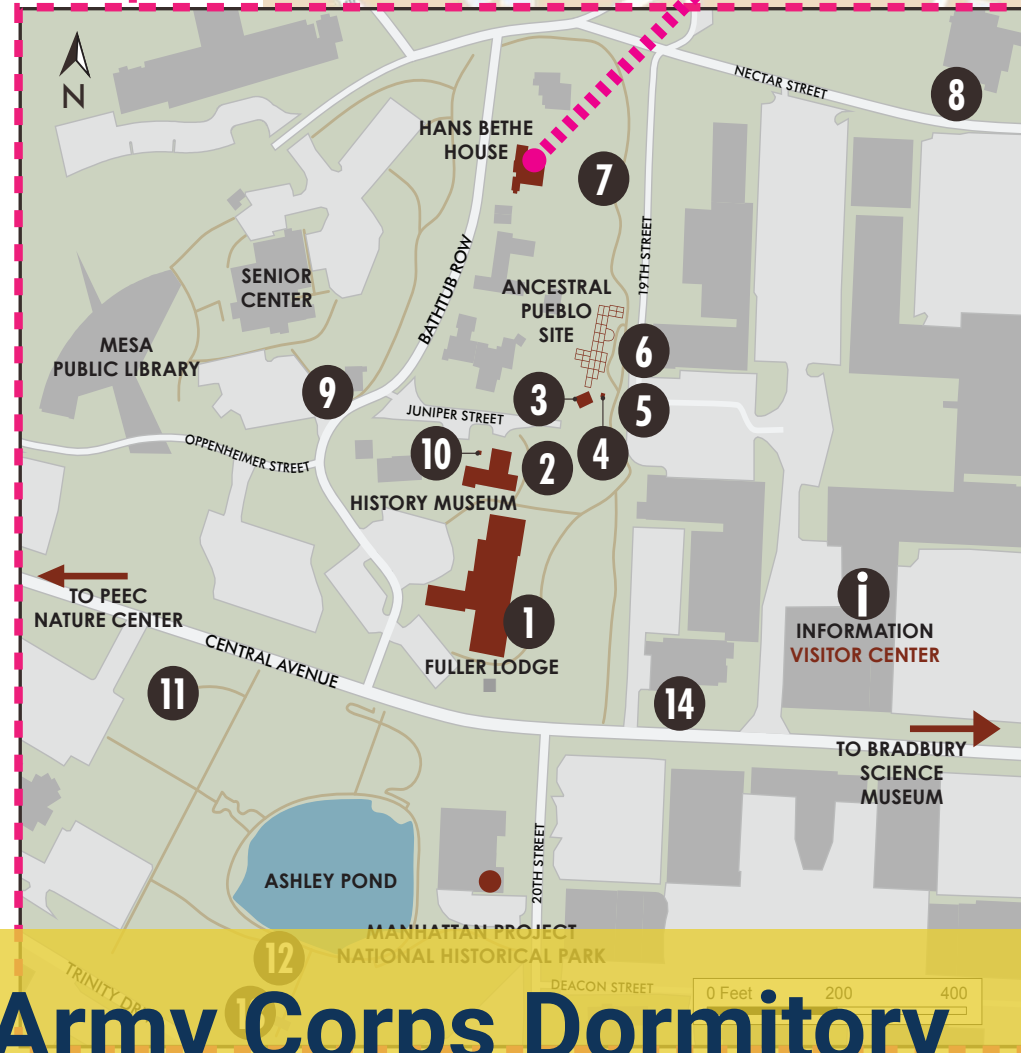
12 Ashley Pond began as a natural depression in the landscape. The Ranch School ensured its water supply by constructing a pipeline from a dam in Los Alamos Canyon. It was named for Ashley Pond Jr., the founder of the Los Alamos Ranch School, whose students could not resist the geographical pun. The boys used it for summer and winter sports. Blocks of ice were cut from the pond in the winter and stored in the Ice House. Ashley Pond Park contains a number of sculptures that are part of the county art collection curated by the Art in Public Places Board.

ICE HOUSE MEMORIAL

13 Today a memorial stands at the site of the Ranch School Ice House. During WWII, the nuclear core of the "Gadget" (the prototype atomic bomb) was assembled here and then transported to Trinity Site, 230 miles south near Socorro, NM. It was successfully detonated on July 16, 1945. During the Manhattan Project and for twenty years after, the technical area laboratories surrounded Ashley Pond (see cover photo). These buildings were removed by the mid-1960s.

POST OFFICE

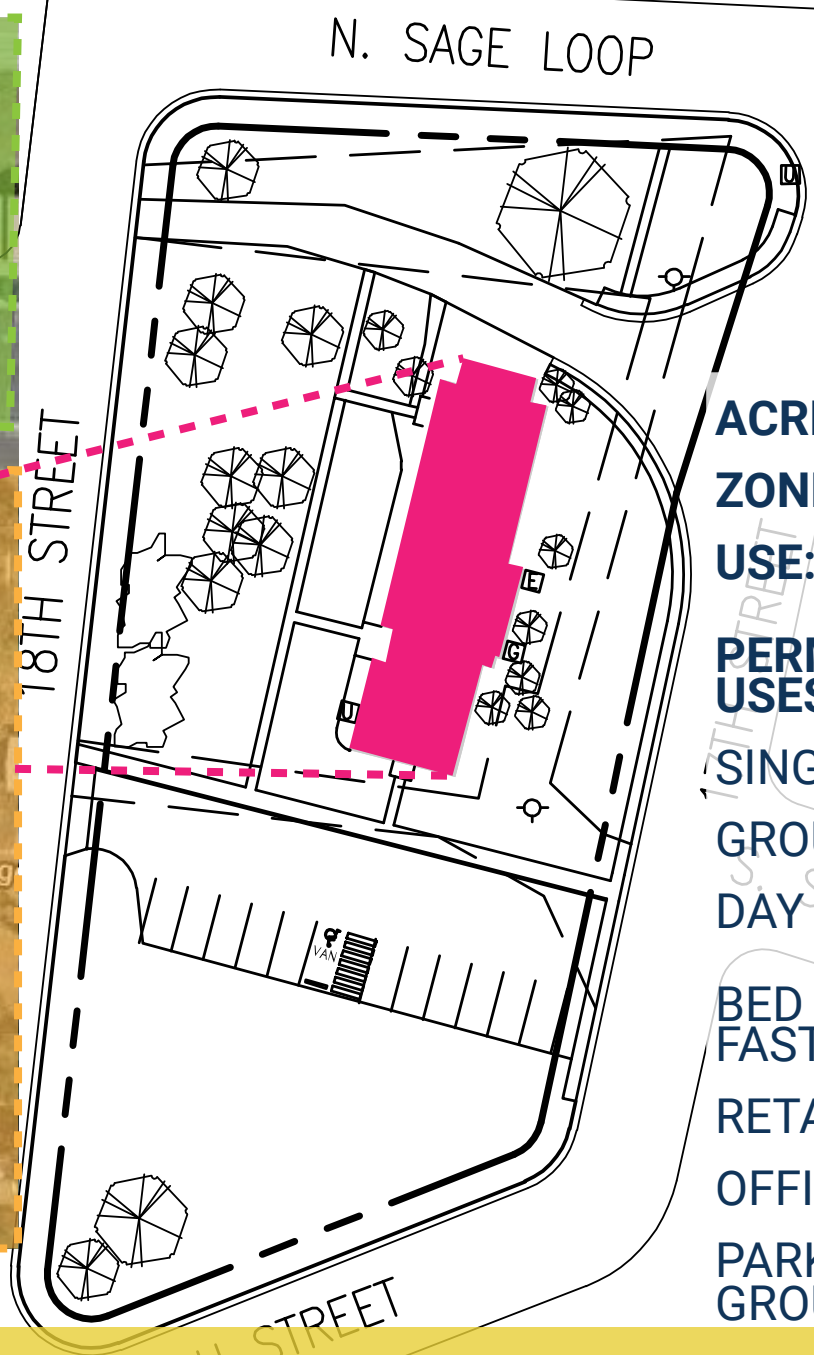
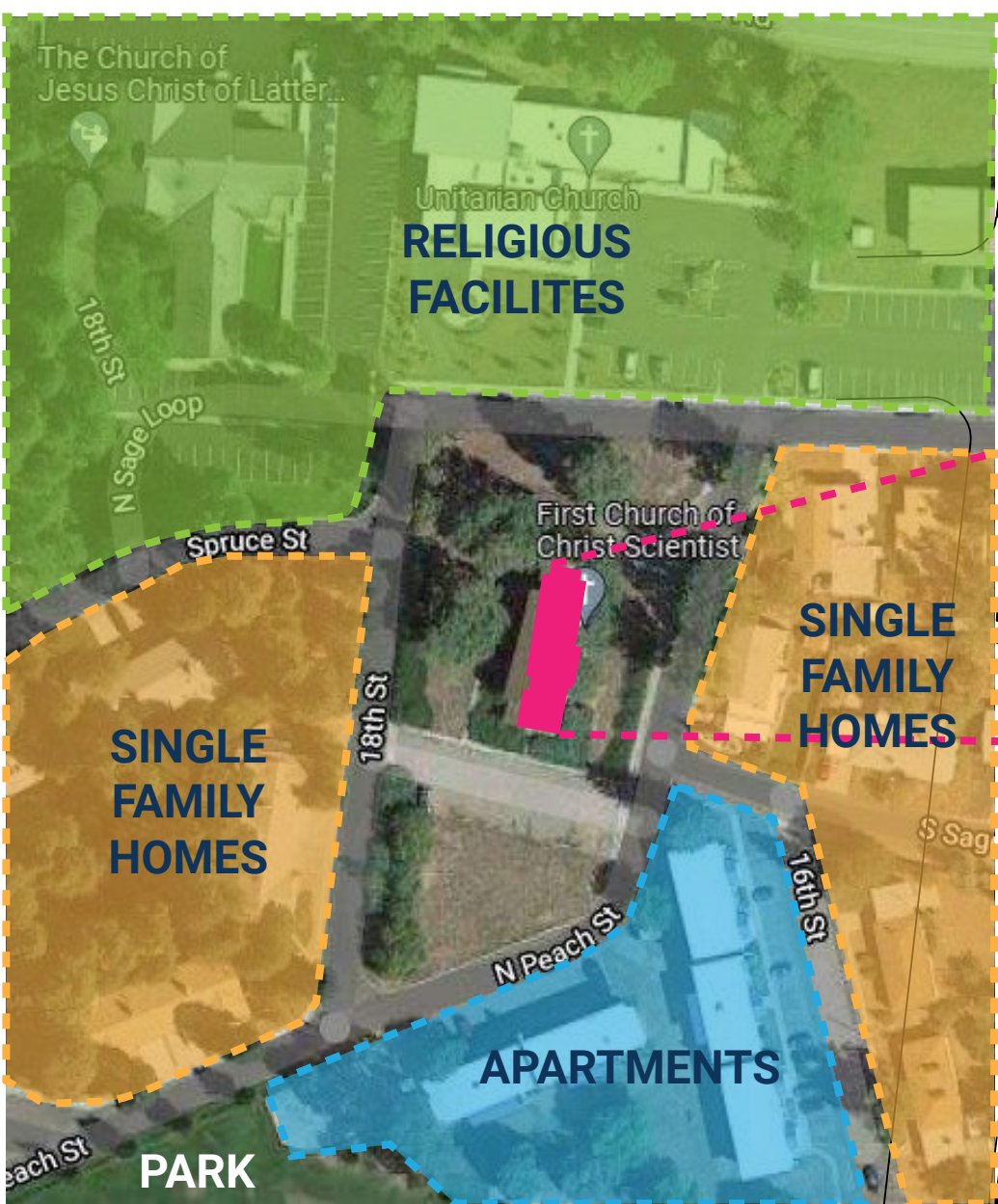
14 During WWII, mail to Los Alamos residents was simply addressed to P.O. Box 9662, Santa Fe, New Mexico. This Post Office, designed and built as part of the Community Center, opened at this location in 1948 on the site of the Ranch School Trading Post. Recently the Post Office was listed on the National Register of Historic Places.



Los Alamos County is investigating Historical Registration status for the W.A.C. Dorm, and expanding the park to include the building.

LAC Women's Army Corps Dormitory Historical Park Boundary

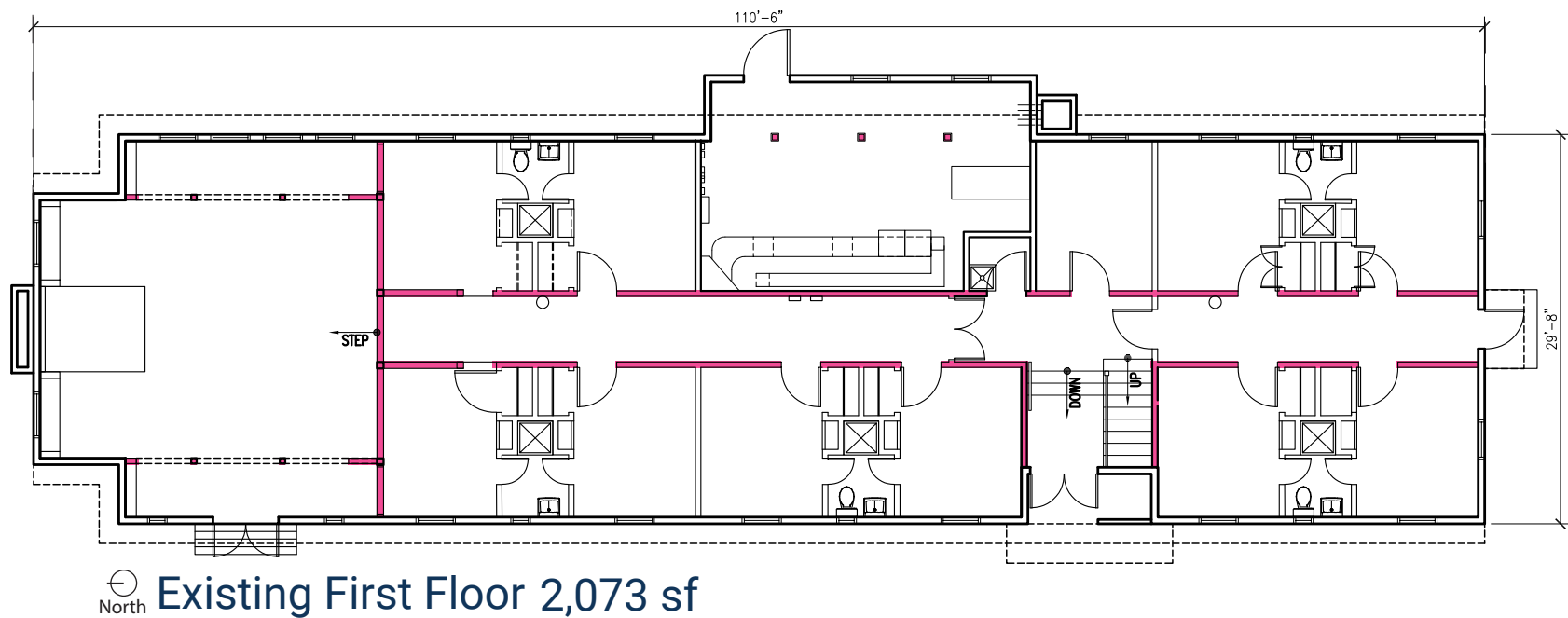
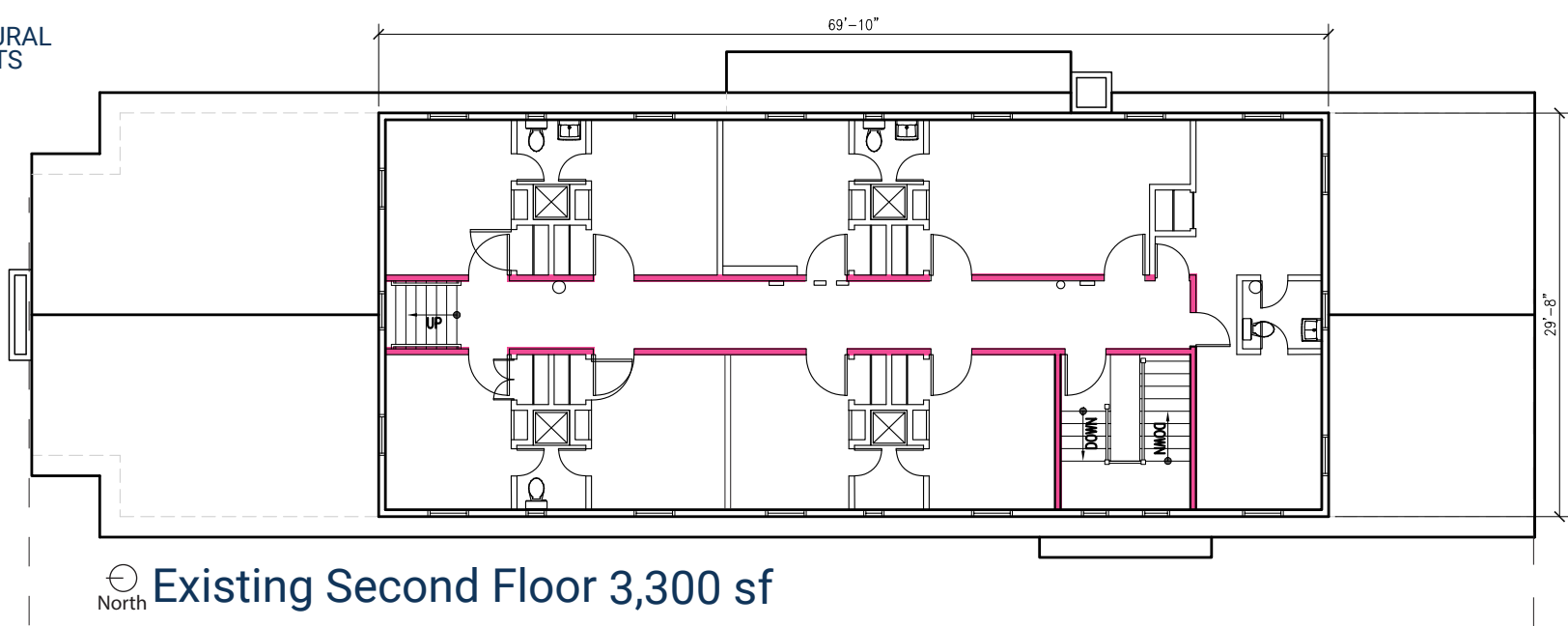
November 2021



- ACRES:** 1.01
- ZONE:** R-1-8
- USE:** ASSEMBLY
- PERMISSIVE USES:**
 - SINGLE FAMILY
 - GROUP HOME
 - DAY CARE
 - BED & BREAK-FAST
 - RETAIL
 - OFFICES
 - PARKS & PLAY-GROUNDS

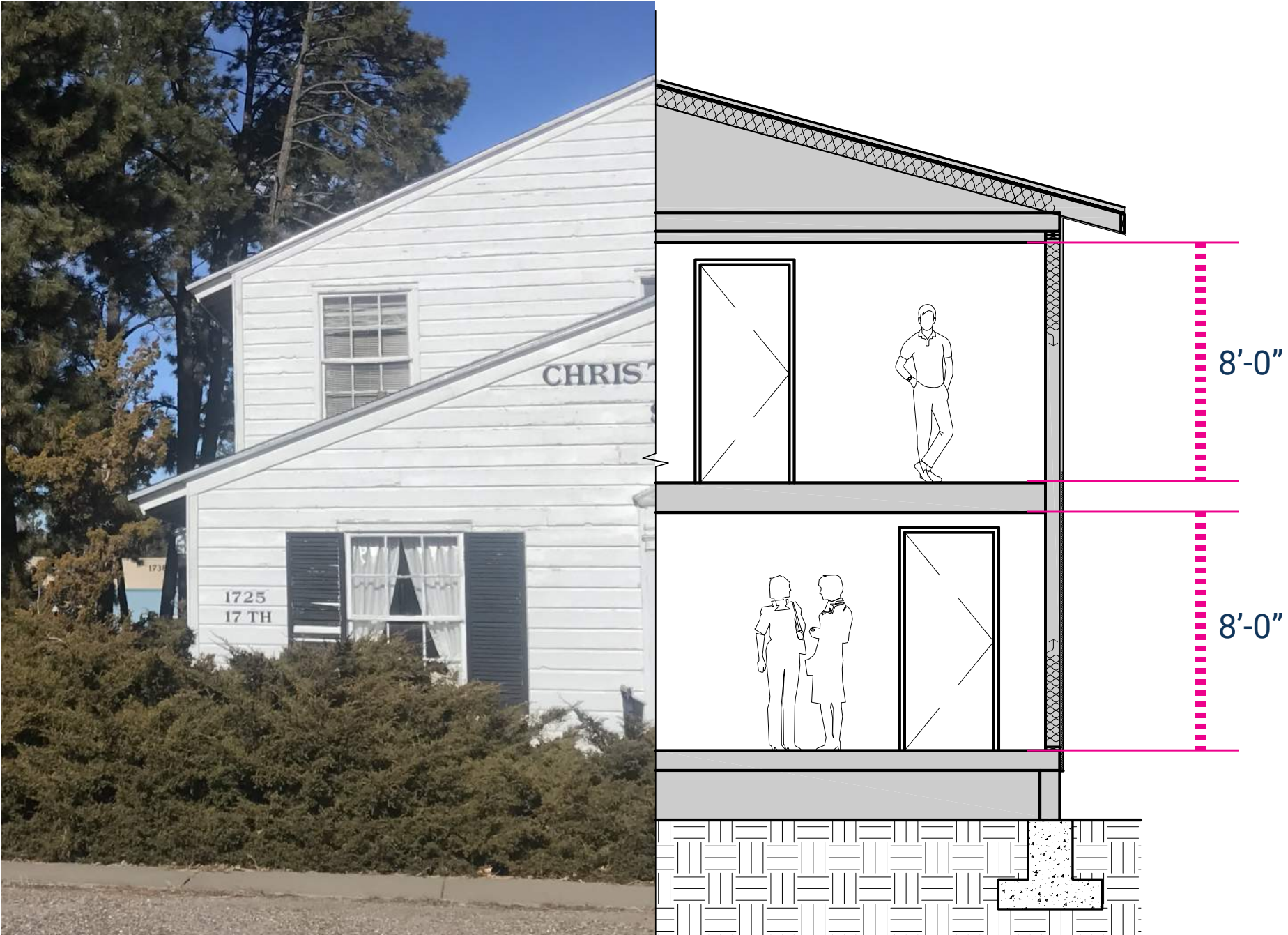
LAC Women's Army Corps Dormitory

Site Context



LAC Women's Army Corps Dormitory

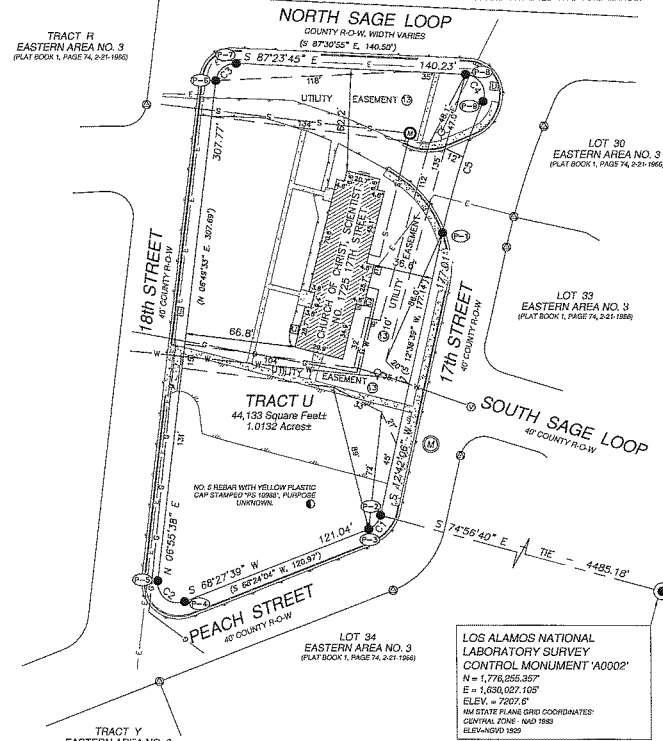
Floor Plans



LAC Women's Army Corps Dormitory

Building Section

November 2021



The Existing Building and Site Evaluation

2020 Building Analysis shall be updated, with additional focus upon:

STRUCTURE

Assessing existing structural members, calculating current loads and maximum loads to understand potential upgrades of modern day usage.

ENVELOPE + POTENTIAL IMPACTS OF CURRENT ENERGY CODE REQUIREMENTS

Identifying potential extents of renovation that would require upgrades per the International Energy Conservation code (IECC) 2015.

SITE + UTILITY ELEMENTS

Obtaining a topographic survey and in-depth utility information for the site.

LAC Women's Army Corps Dormitory

Existing Conditions

POTENTIAL BUILDING IMPROVEMENTS



NEW SEWER, WATER, & FIRE SUPPRESSION LINES

NEW ROOF

NEW PAINT

NEW MECHANICAL

NEW ELECTRICAL

NEW OR REHABILITATED WINDOWS/ STORM WINDOW

ADA ACCESSIBILITY (EXTENT DEPENDENT ON NEW USE)

POTENTIAL SITE IMPROVEMENTS



ADA ACCESSIBILITY: NEW SIDEWALKS AND RAMPS

NEW PARKING LOT

NEW 3 PHASE POWER

NEW SEWER, WATER, AND FIRE LINES

NEW LANDSCAPING AND IRRIGATION

LAC Women's Army Corps Dormitory

Potential Improvements

How would you like to
see the W.A.C. Dorm
used?

LAC Women's Army Corps Dormitory

Community Discussion & Input

Potential Use:

The Manhattan Project National Historical Park (MPNHP) is wanting to enhance the Park's presence in the Community and is interested in using part of the County-owned W.A.C. Dorm.

Visitors Center

For the National Parks Service/Manhattan Project National Historical Park
Current operating hours 10am-3pm Friday-Monday

- Offices
- Interior gathering space for exhibits and educational programs
- Exterior gathering space for exhibits and educational programs
- Bus parking
- Temporary lodging for seasonal Park Service employees
- Park Service Does not need to occupy the entire building

LAC Women's Army Corps Dormitory

Potential Uses