



Chamisa and Piñon Elementary School Replacement

County Meeting



Agenda

Introductions

Process

Gym Schemes

Where we
are....

01.20.2022



06.03.2022

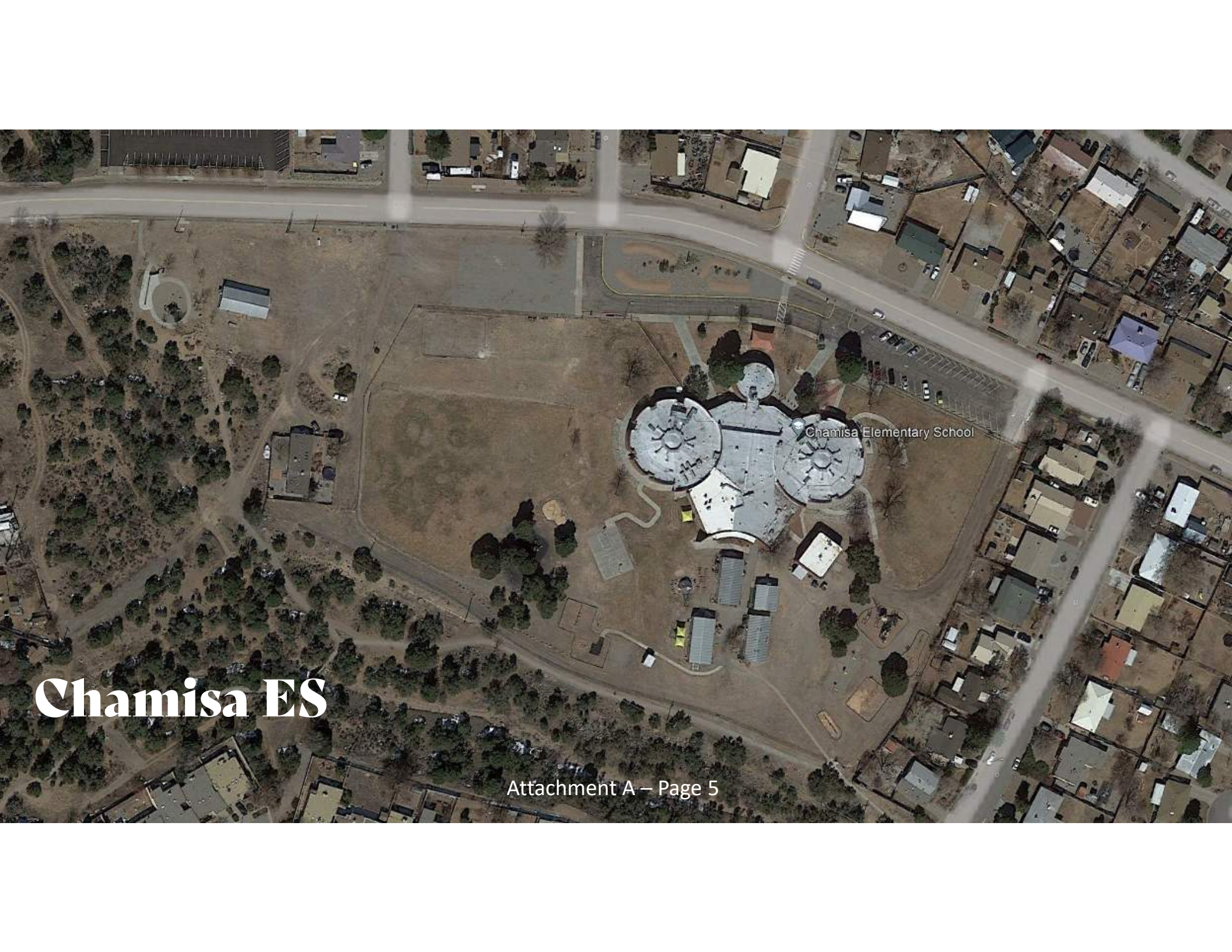




Chamisa ES



Piñon ES



Chamisa ES

Mission

All members in our Chamisa Elementary School family foster a safe, active learning community that values the worth, dignity, and leadership capacity of every individual.

Vision

We put our best foot forward in scholarship, character, and life.

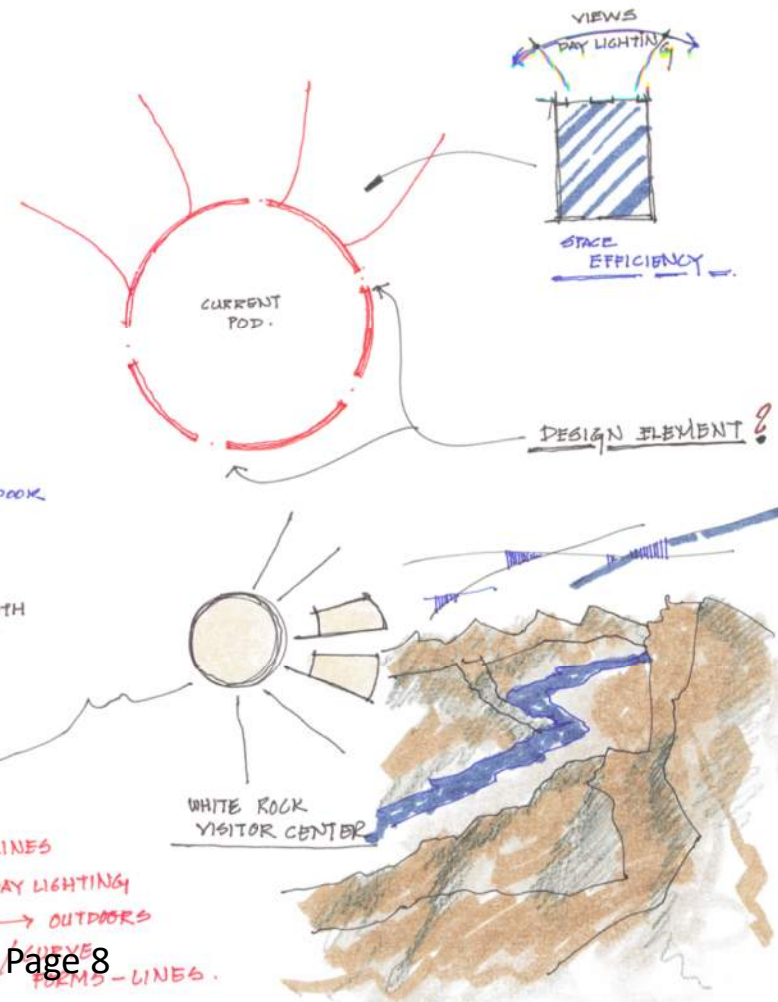
Core Values

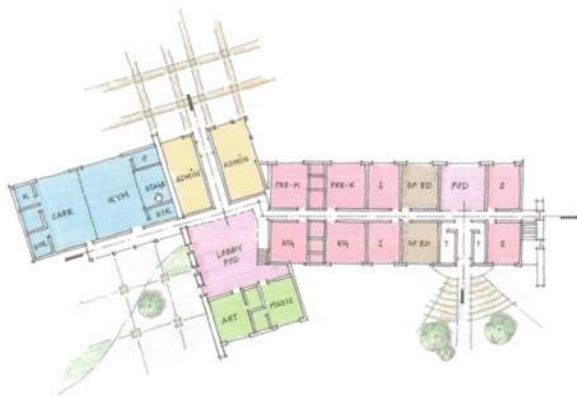
- A teaming and collaborative environment
- A challenging education that builds upon individual students' talents which strengthens and creates motivated learners
- Fostering positive character
- A safe and accepting atmosphere of community and belonging
- A well-rounded education for students and staff

Concept

CHAMISA

- COLLABORATION
 - COMMUNITY INVOLVEMENT
 - WELL ROUNDED EDUCATION
 - TEAM TEACHING
 - PBL - PROJECT BASED LEARNING
 - SUSTAINABILITY
 - KINDER BUDDY PROGRAM
- FLEXIBLE SPACES
 - EASILY ACCESSIBLE CORE SPACES + PLAY AREAS
 - CENTRAALLY LOCATED YET A SEPERATE SPACE FOR PODS
 - INDOOR/OUTDOOR
 - BUILDING ORIENTATION - LIMIT EAST/WEST ORIENTATION
 - GRADE SEPERATION





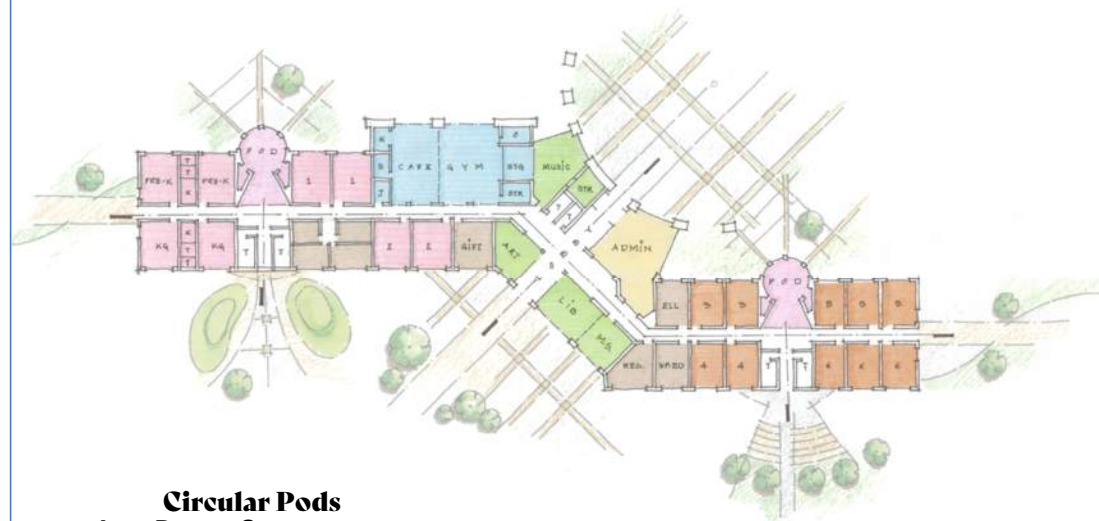
Half & Half



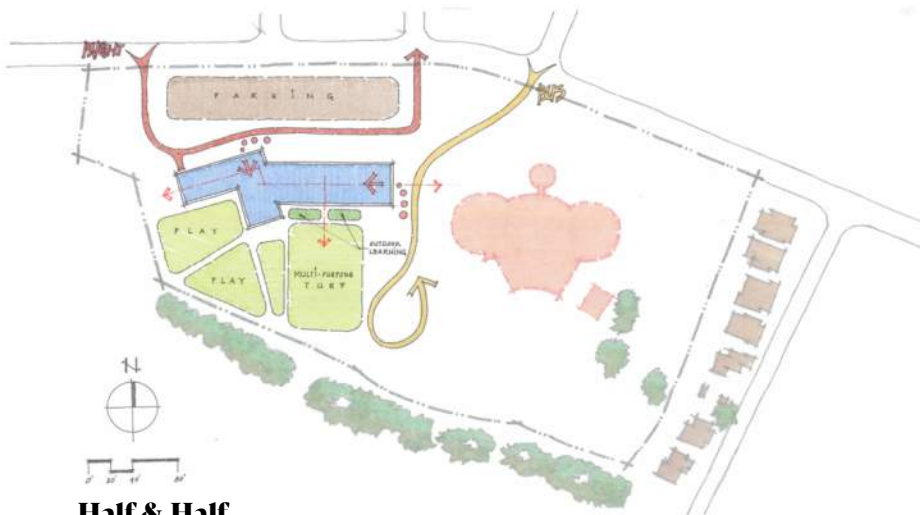
Perspective



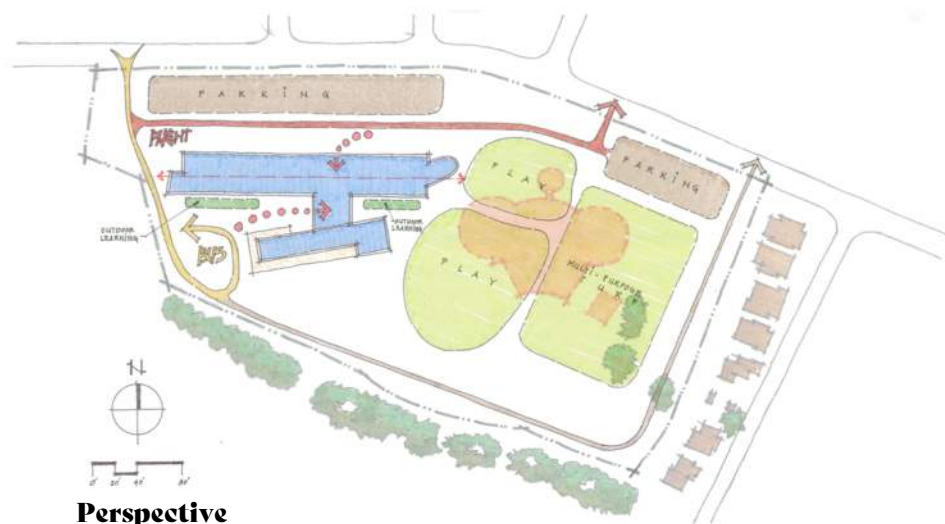
Angular



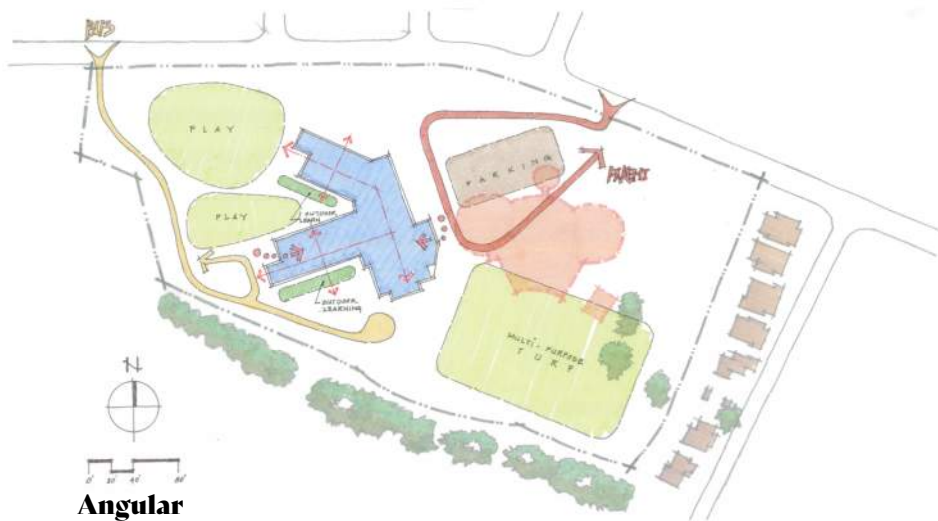
Circular Pods



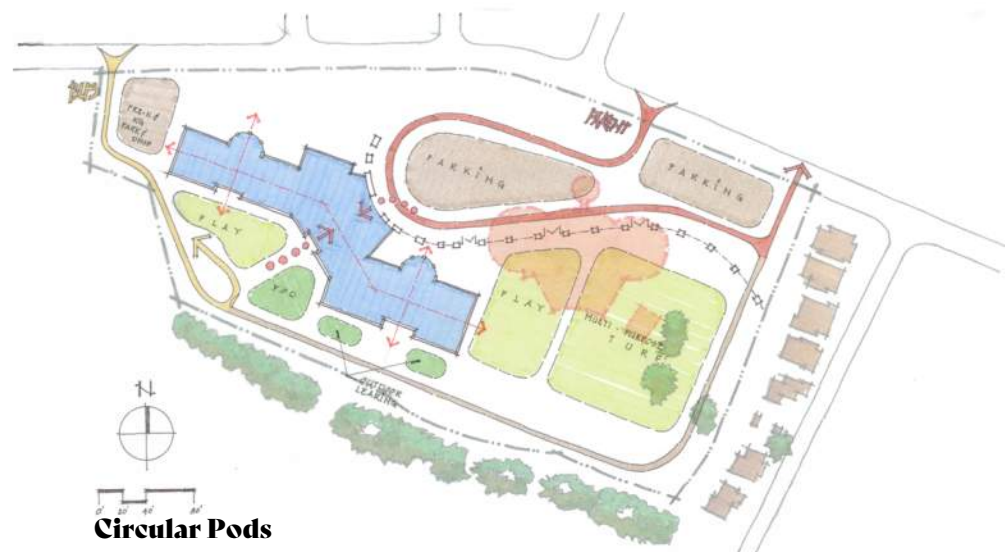
Half & Half



Perspective

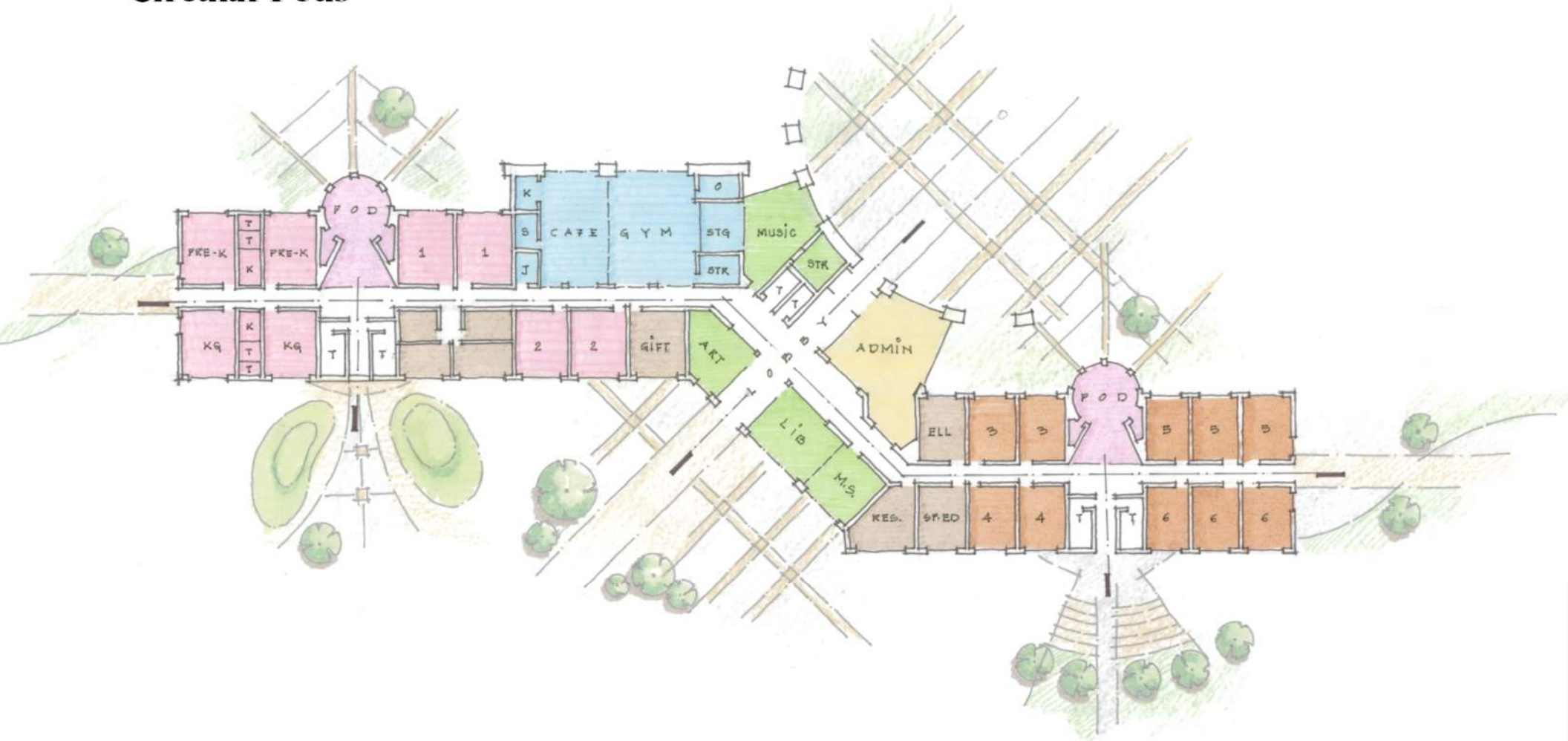


Angular



Circular Pods

Circular Pods



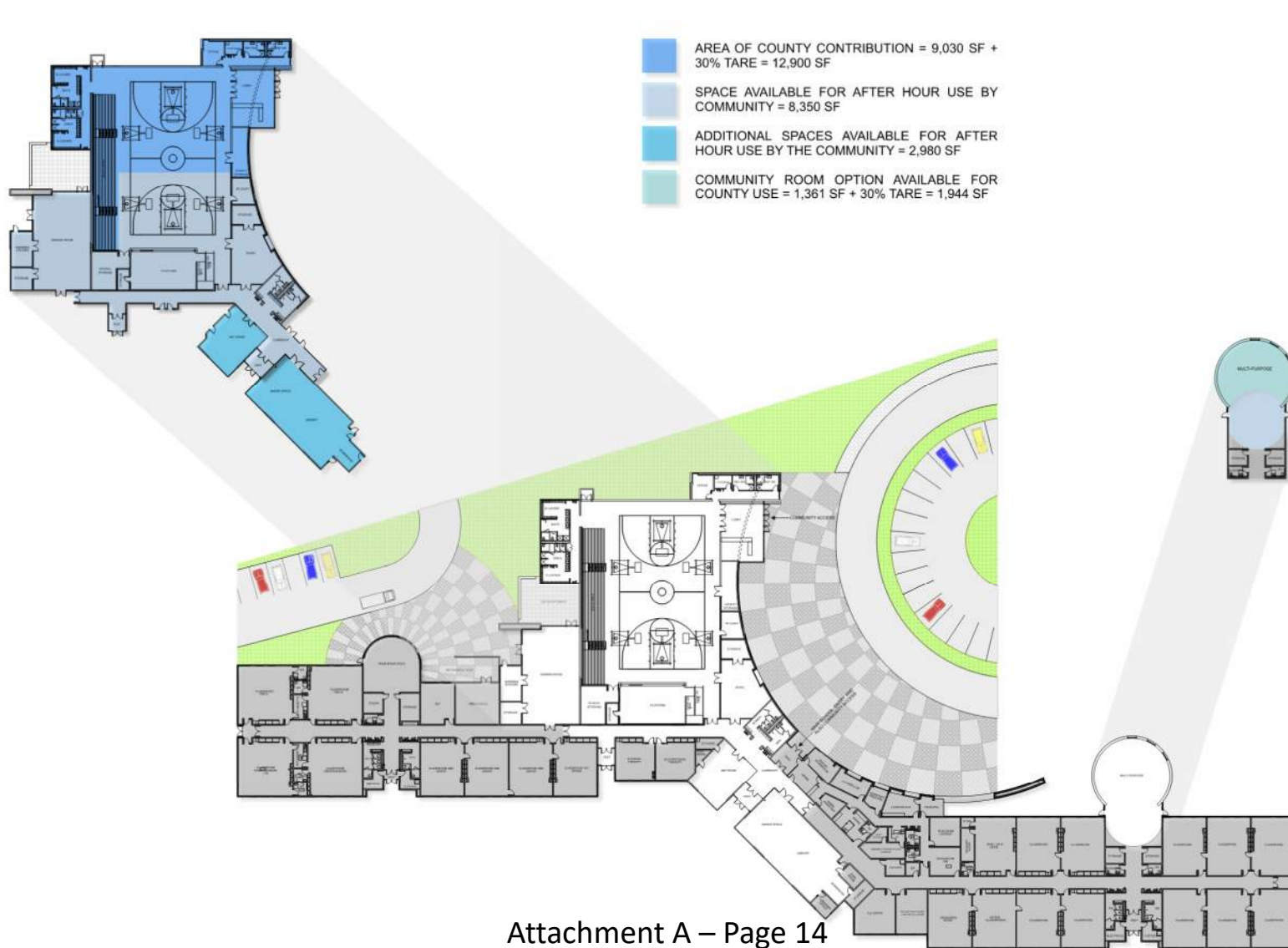
Circular Pods

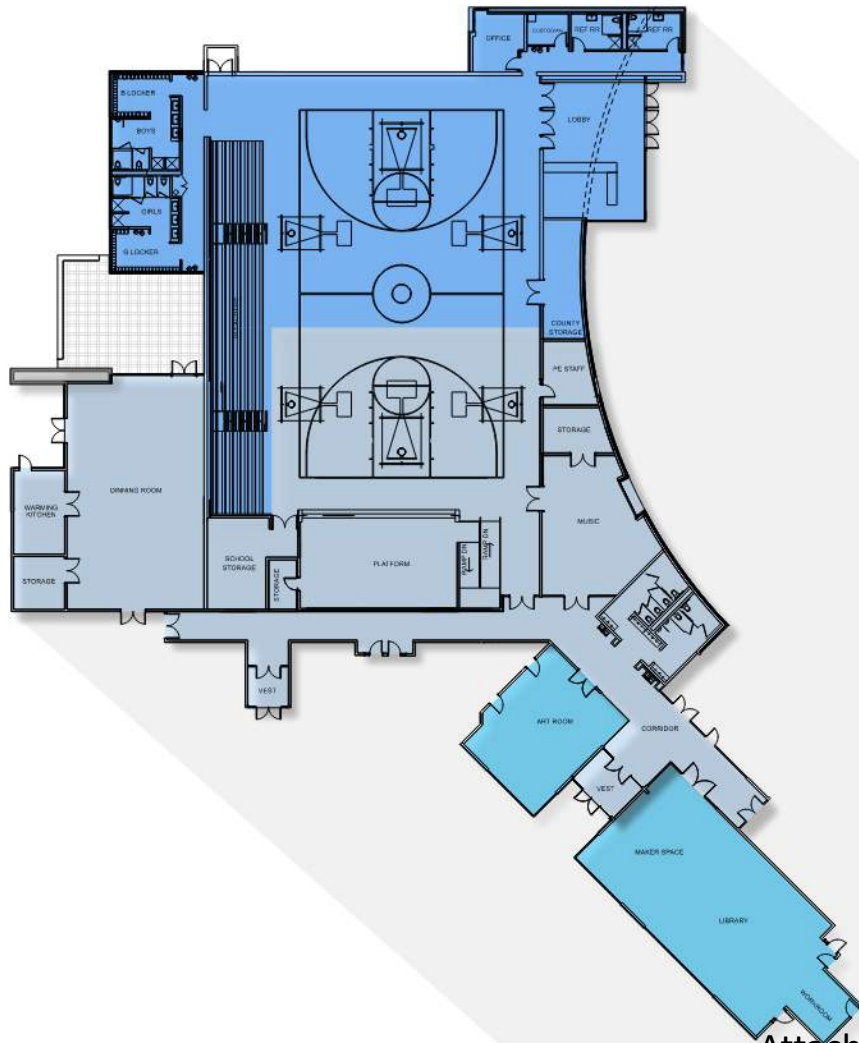
Site plan for a school layout titled "Circular Pods". The plan shows a central blue building with red arrows indicating movement paths. To the left is a "BUS" drop-off area and a "PRE-K & KG PARK & DROP" area. To the right are two "PARKING" lots. In the center is a "PLAY" area with a "POD" and a "MULTI-PURPOSE TURF" field. A red path labeled "FACILITY" runs along the top. A green path labeled "OUTDOOR LEARNING" runs along the bottom. A north arrow and a scale bar (0' to 80') are in the bottom left.

Attachment A – Page 12

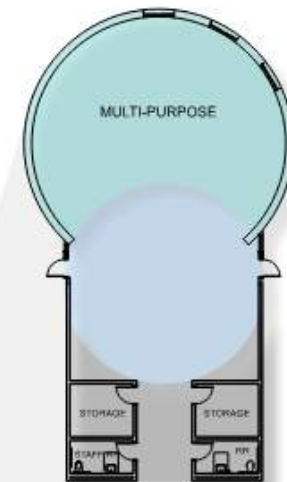


Floor Plan





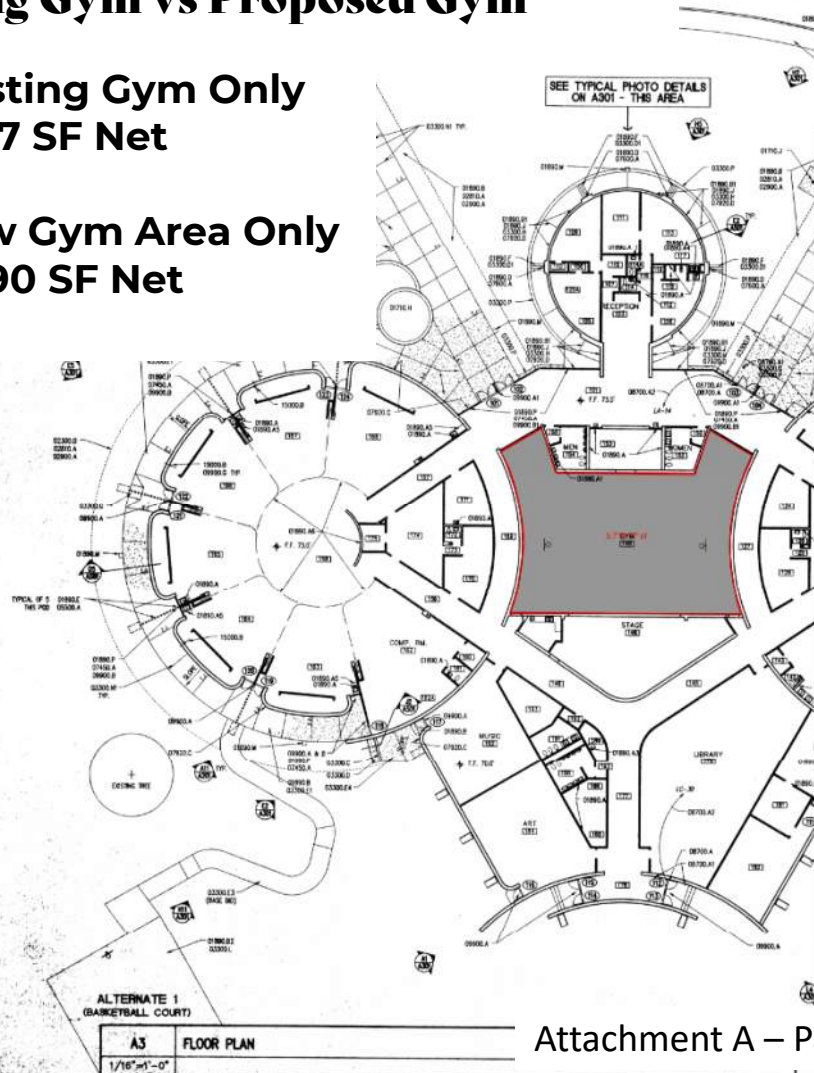
- AREA OF COUNTY CONTRIBUTION = 9,030 SF + 30% TARE = 12,900 SF
- SPACE AVAILABLE FOR AFTER HOUR USE BY COMMUNITY = 8,350 SF
- ADDITIONAL SPACES AVAILABLE FOR AFTER HOUR USE BY THE COMMUNITY = 2,980 SF
- COMMUNITY ROOM OPTION AVAILABLE FOR COUNTY USE = 1,361 SF + 30% TARE = 1,944 SF



Existing Gym vs Proposed Gym

**Existing Gym Only
3,717 SF Net**

**New Gym Area Only
8,690 SF Net**

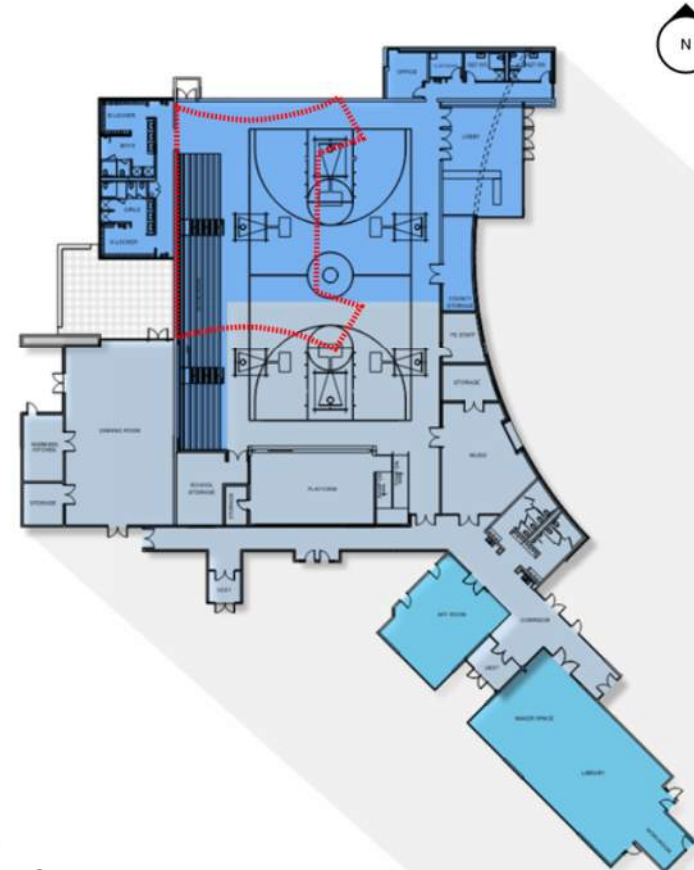


MATERIALS KEYING LEGEND CONT.

EXISTING FINISHES AND COATINGS
A. PAINT METAL DOORS, FRAMES, TRIM, AND TRANSOM/SCREENS, PANELS, EXTERIOR & INTERIOR
B. PAINT METAL SPOOLS AND TRANSOM PANELS (EXTERIOR & INTERIOR)
C. PAINT METAL WINDOW FRAMES AND TRIM (EXTERIOR & INTERIOR)
D. PAINT EXTERIOR WALLS (EXTERIOR & INTERIOR)
E. PAINT METAL LAMINATE AND TRIM (EXTERIOR & INTERIOR)
F. PAINT
G. PAINT
H. PAINT
I. PAINT
J. PAINT
K. PAINT
L. PAINT
M. PAINT
N. PAINT
O. PAINT
P. PAINT
Q. PAINT
R. PAINT
S. PAINT
T. PAINT
U. PAINT
V. PAINT
W. PAINT
X. PAINT
Y. PAINT
Z. PAINT

MATERIALS KEYING LEGEND

EXISTING FINISHES AND COATINGS
A. PAINT METAL DOORS, FRAMES, TRIM, AND TRANSOM/SCREENS, PANELS, EXTERIOR & INTERIOR
B. PAINT METAL SPOOLS AND TRANSOM PANELS (EXTERIOR & INTERIOR)
C. PAINT METAL WINDOW FRAMES AND TRIM (EXTERIOR & INTERIOR)
D. PAINT EXTERIOR WALLS (EXTERIOR & INTERIOR)
E. PAINT METAL LAMINATE AND TRIM (EXTERIOR & INTERIOR)
F. PAINT
G. PAINT
H. PAINT
I. PAINT
J. PAINT
K. PAINT
L. PAINT
M. PAINT
N. PAINT
O. PAINT
P. PAINT
Q. PAINT
R. PAINT
S. PAINT
T. PAINT
U. PAINT
V. PAINT
W. PAINT
X. PAINT
Y. PAINT
Z. PAINT









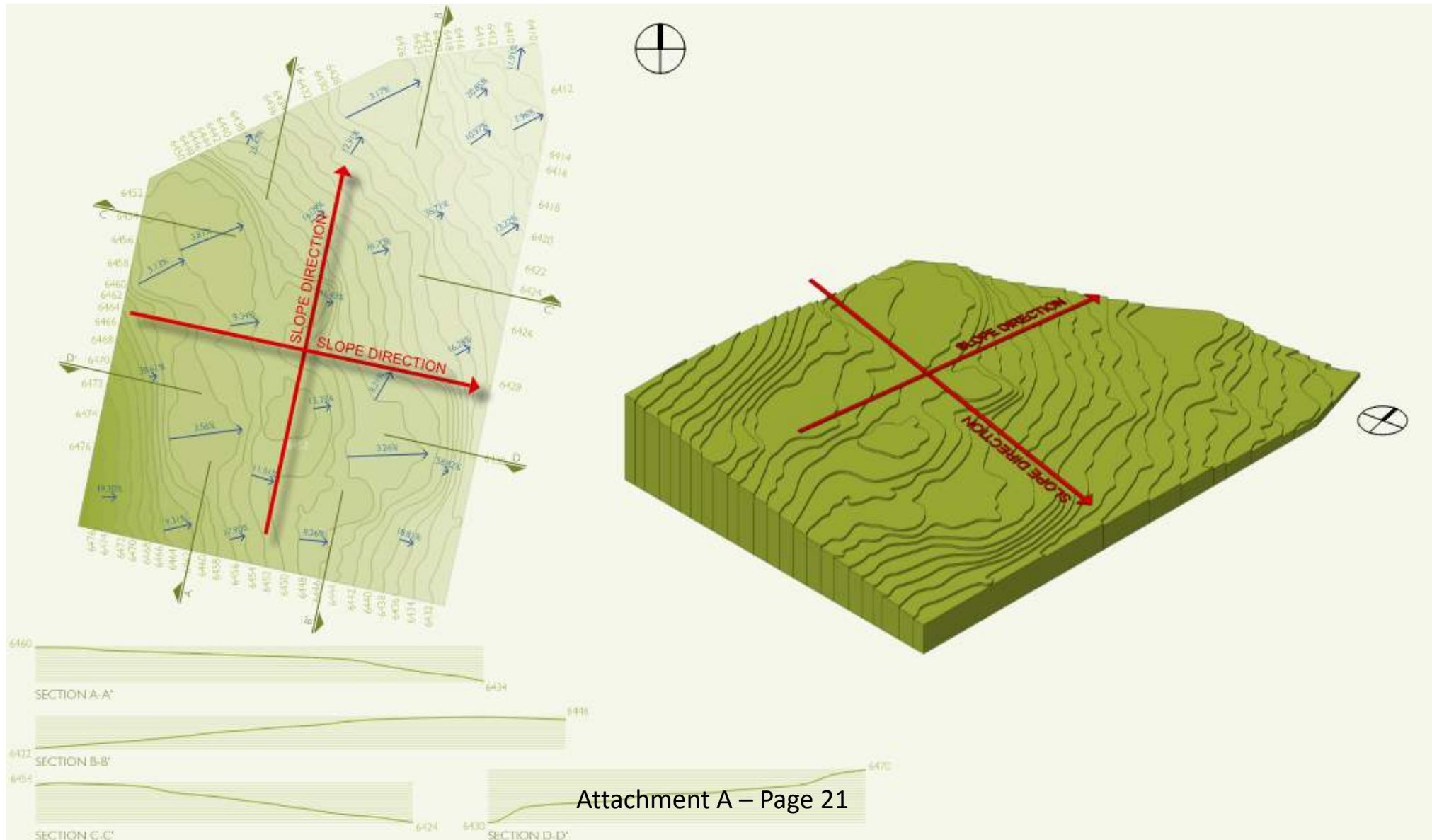
Pinon Park

Piñon Elementary School

Piñon ES







Mission

Pinon Elementary provides the skills and values for student success now and in their future

Vision

Pinon students will be kind and learn

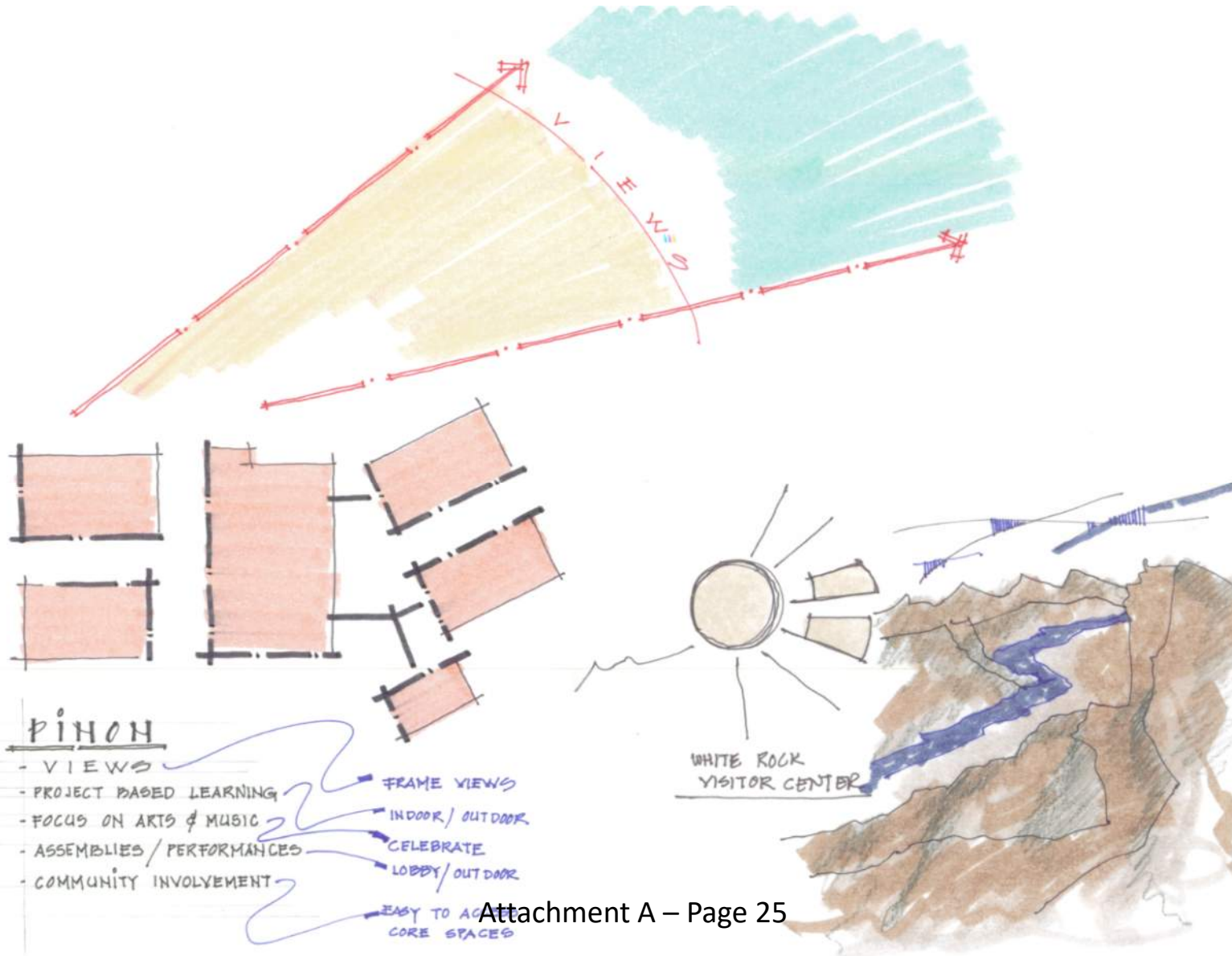
Core Values

- Character: Pinon Elementary School teaches, models, and practices kindness, integrity, and resiliency.
- Community: Pinon Elementary School fosters a mindset of safety and respect in school and home communities.
- Commitment to Learning: Pinon Elementary School utilizes learning strategies that promote academic rigor and students' passions to learn.



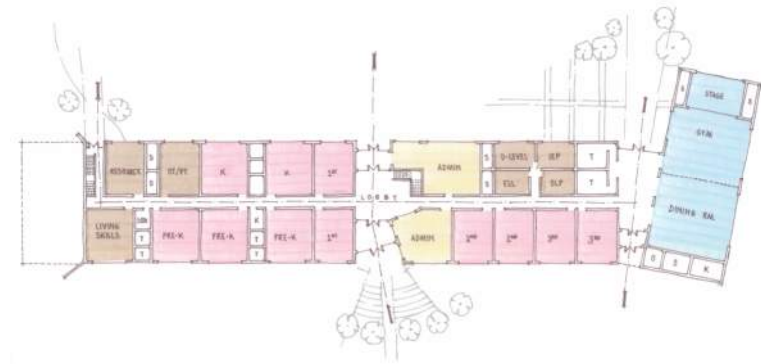
Amazing views!







Linear



Angled



Pinwheel



Curves

Conceptual Site Plan Options

Linear



Angled



Pinwheel



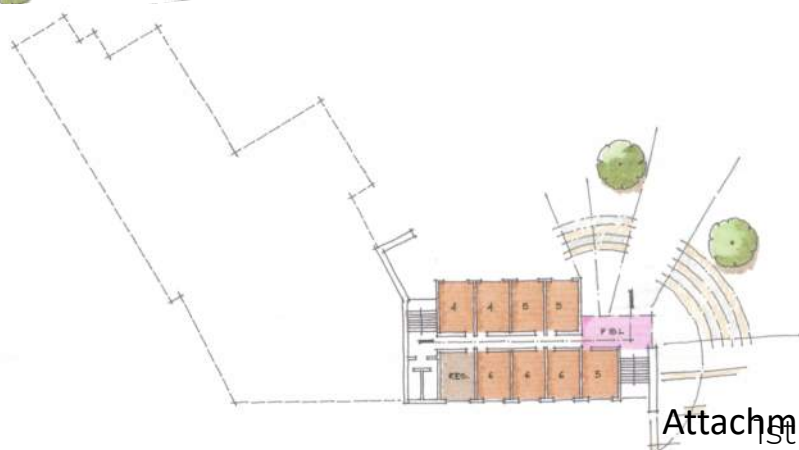
Curves



Curves

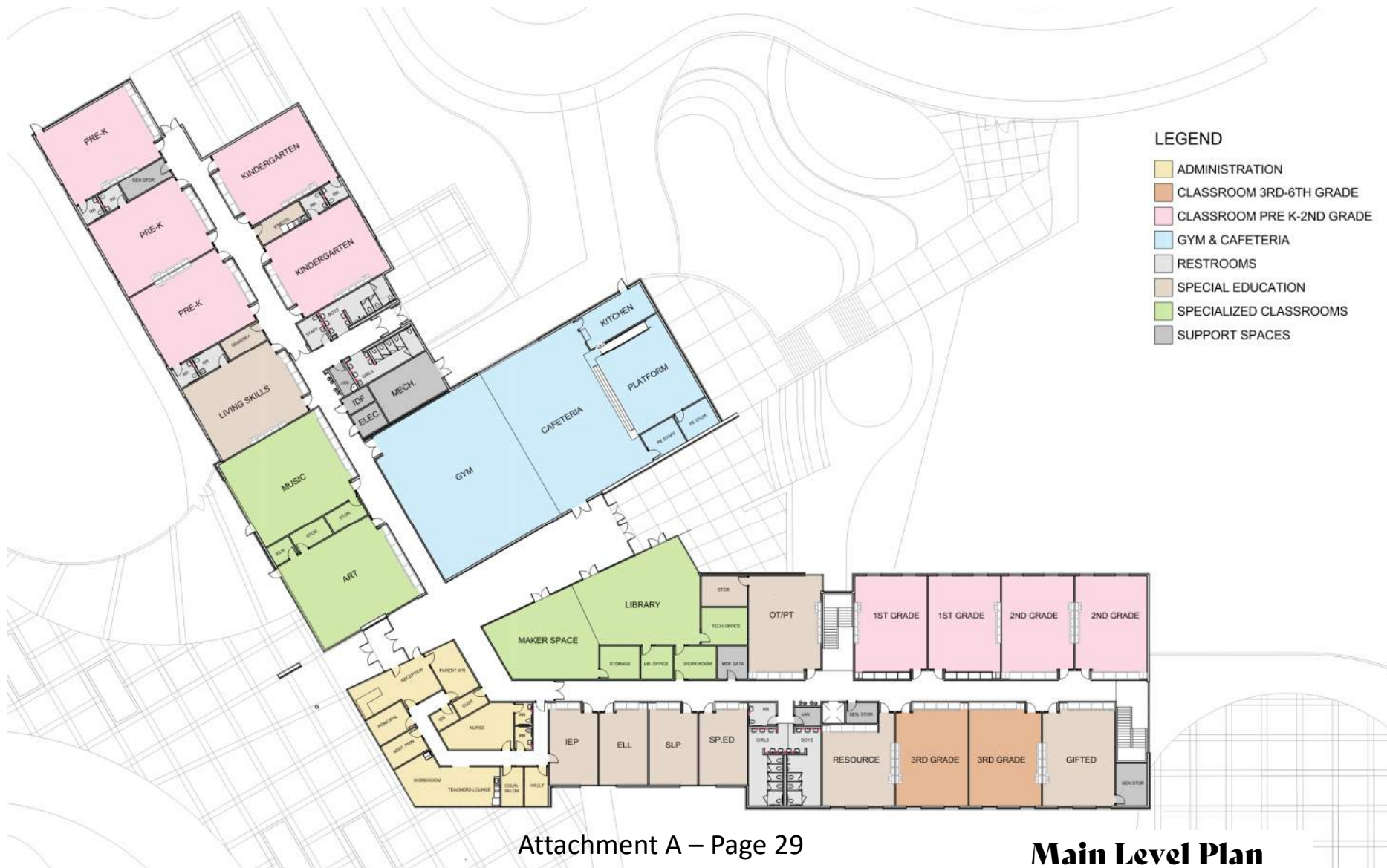


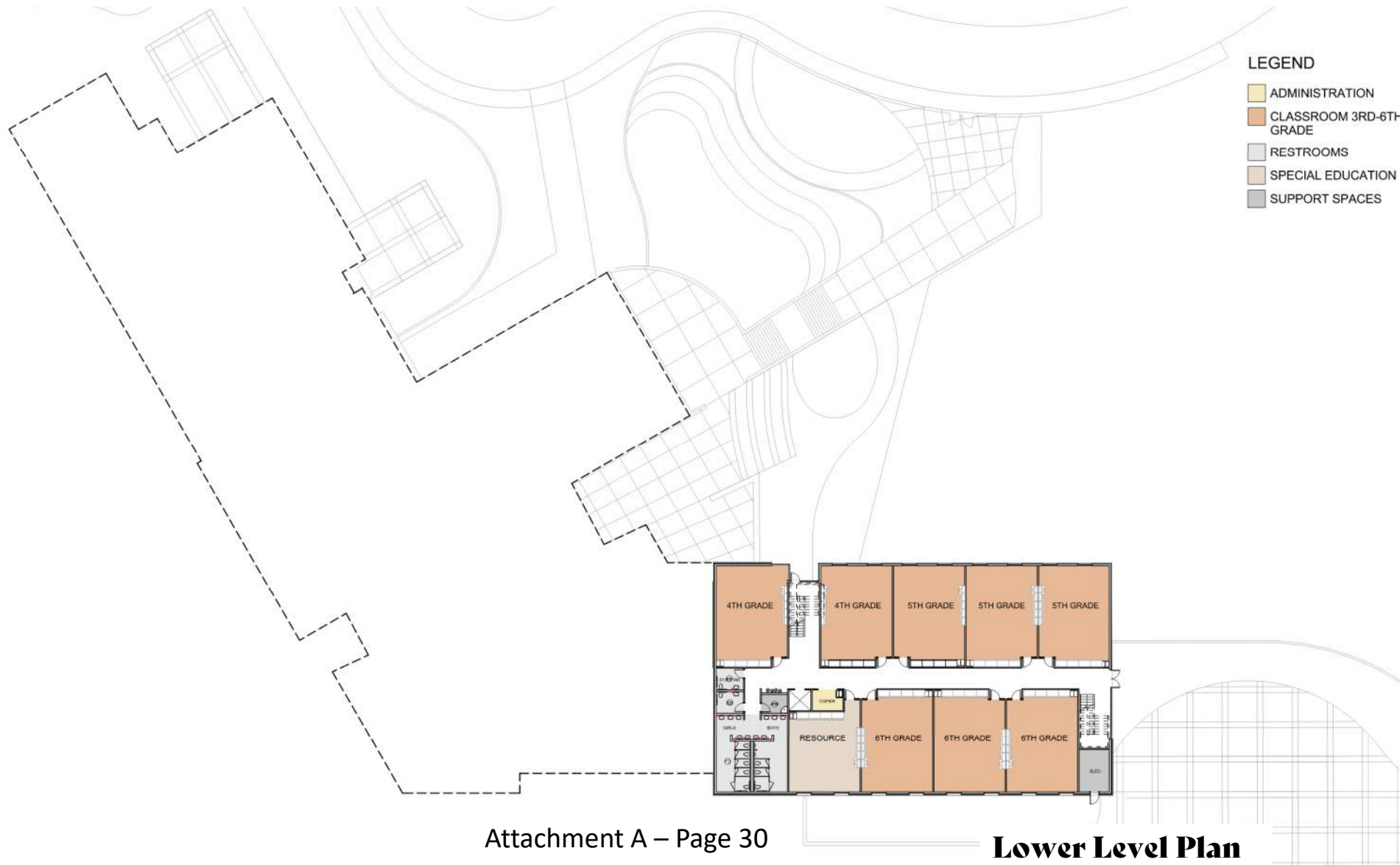
2nd Level



1st Level







Main Level Plan



- AREA OF COUNTY CONTRIBUTION = 7,139 SF + 30% TARE = 10,199 SF
- SPACE AVAILABLE FOR AFTER HOUR USE BY COMMUNITY = 11,137 SF
- ADDITIONAL SPACES AVAILABLE FOR AFTER HOUR USE BY THE COMMUNITY = 3,438 SF



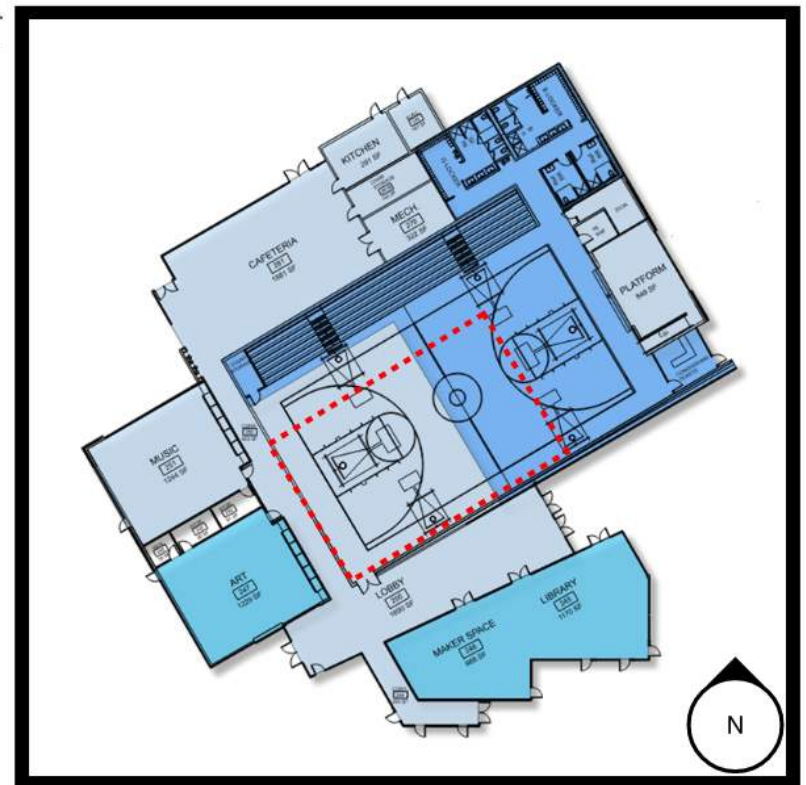
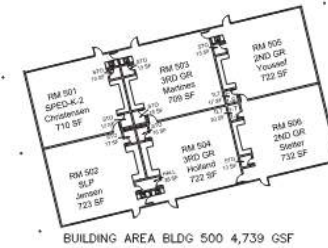
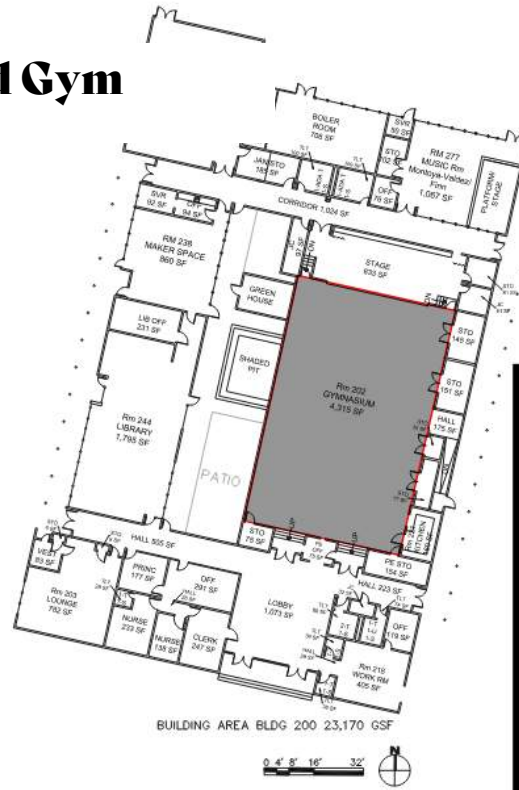
[illegible]

ADDITIONAL SPACES AVAILABLE FOR AFTER
HOUR USE BY THE COMMUNITY = 3,438 SF

Existing Gym vs Proposed Gym

Existing Gym Only
4,209 SF Net

**New Gym Area Only
8,690 SF Net**





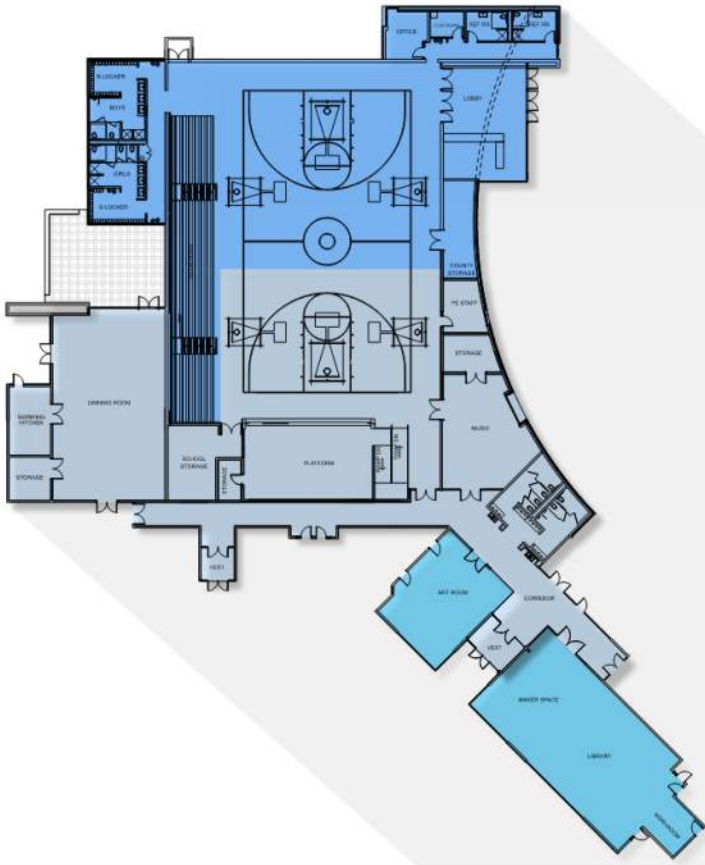


Piñon ES

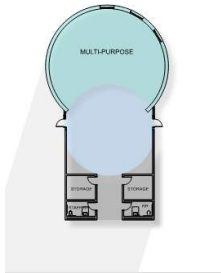


County Contribution	10,199 SF
Current Projected Construction Cost per SF	\$525
Projected Cost for Gym Expansion	\$5,354,475

Chamisa ES



County Contribution	12,900 SF
Current Projected Construction Cost per SF	\$525
Projected Cost for Gym Expansion	\$6,772,500



POD SPACE	
County Contribution	1,944 SF
Projected Cost per SF	\$525
Project Cost Total	\$1,020,600



Thank you!