

# Public Works (PW): Admin

## Meeting Our Goals

Our mission: To provide responsive, professional, and courteous service to the public.

## News & Updates

Staff manages customer feedback, addresses customer inquiries, and concerns and provides information to stakeholders and the media on all Public Works Projects.

## Connecting with the Public

The Transportation Board meeting on November 3, 2022, was canceled.

## Looking Ahead

The next Transportation Board meeting will be held on December 1, 2022.

## Meeting Our Goals

Consistent with the Council strategic priority to invest in infrastructure, the Engineering Division has been actively managing multiple construction projects across the county. These construction projects are in the final stages with many of them in closeout with punch list work underway.

## News & Updates

The Sherwood Boulevard project was completed in November with only punch list work remaining. The Canyon Road project is in closeout.

The 33<sup>rd</sup>/34<sup>th</sup> and Arkansas project was advertised for construction with the evaluation committee recommending award at Council on November 29<sup>th</sup>.

Staff has been involved in development inspections and design reviews for the Arbolada Subdivision on North Mesa, the Arkansas Townhomes, and the Hills Apartments.

## Connecting with the Public

The Trinity Safety ADA project design alternatives are being developed with a public input meeting anticipated in February/March 2023. More details to come.

## Looking Ahead

The Engineering Division is currently in design development for the Rose Street, and Loma Linda projects scheduled to begin in FY23. The design for the Finch Street project is being finalized by an engineering on-call with right-of-way acquisitions underway. Procurement documents are in development for the Urban Trail, and DP Road Phase II projects and are anticipated for early 2023 construction.

## STATS Update

---

*36 Customer Service  
Emails*

*76 Roll Cart Requests*

*66 Household Hazardous  
Waste Customers*

*2,434 Recycle Coach App  
Users*

*14,933 Recycle Coach App  
Interactions*

*255 Overlook Visitors*

*1,847 Transfer Station  
Visitors*

*5,097 Yard Trimming  
Participants*

*1.3K Social Media  
Followers*

## Meeting Our Goals

Operation Save the Bears - Environmental Services continues to evaluate the ~480 bear resistant roll carts that were delivered to North Community 3 (NC3). A survey was mailed to the residents in NC3 to identify any issues and gather information on how well they are working to reduce bear encounters and to gauge customer satisfaction. We received 120 responses from the survey and results will be analyzed and presented to County Council in a future meeting.

## News & Updates

The Environmental Sustainability Board meeting, November 17, 2022, was held in Council Chambers and via Zoom. The ESB received a presentation from Board Member Hermann Geppert on How Do We Get More People on Bikes in Los Alamos County. County Council also appointed two new members, Kokheong McNaughton and Armand Groffman.

The Zero Waste Team did not meet in November but continue to publish Zero Waste articles emphasizing waste reduction for the upcoming Thanksgiving holiday.

## Connecting with the Public

Recycle Coach app is a great asset for residents to check collection schedules and use the 'What Goes Where' search tool for recycle questions. The number one customer interaction is collection day reminders and real time notifications.

Yard Trimming collection officially began March 14, 2022 and as of November 21, 2022, Environmental Services has collected over 813 tons of material. The yard trimming roll cart is for organic yard trimmings only, which includes short branches, flowers, grass clippings, leaves, pine needles and pinecones. Residents are allowed one cart per household. Register for a Yard Trimming Cart online at [www.losalamosnm.us/gogreen](http://www.losalamosnm.us/gogreen)

## Looking Ahead

Environmental Services collects yard trimming carts spring through fall with no collection during the winter months. The final day of yard trimming collection will be the week of December 9, 2022. Environmental Services Division will provide Christmas tree collection January 3-6<sup>th</sup> and January 17-20<sup>th</sup>. Yard trimming collection will begin again on March 27, 2023.

# 2023 ROLL CART COLLECTION SCHEDULE

JANUARY						
SU	MO	TU	WE	TH	FR	SA
1	2	3	4	5	6	7
8	9	10	11	12	13	14
15	16	17	18	19	20	21
22	23	24	25	26	27	28
29	30	31				

FEBRUARY						
SU	MO	TU	WE	TH	FR	SA
			1	2	3	4
5	6	7	8	9	10	11
12	13	14	15	16	17	18
19	20	21	22	23	24	25
26	27	28				

MARCH						
SU	MO	TU	WE	TH	FR	SA
			1	2	3	4
5	6	7	8	9	10	11
12	13	14	15	16	17	18
19	20	21	22	23	24	25
26	27	28	29	30	31	

APRIL						
SU	MO	TU	WE	TH	FR	SA
						1
2	3	4	5	6	7	8
9	10	11	12	13	14	15
16	17	18	19	20	21	22
23	24	25	26	27	28	29
30						

MAY						
SU	MO	TU	WE	TH	FR	SA
	1	2	3	4	5	6
7	8	9	10	11	12	13
14	15	16	17	18	19	20
21	22	23	24	25	26	27
28	29	30	31			

JUNE						
SU	MO	TU	WE	TH	FR	SA
				1	2	3
4	5	6	7	8	9	10
11	12	13	14	15	16	17
18	19	20	21	22	23	24
25	26	27	28	29	30	

JULY						
SU	MO	TU	WE	TH	FR	SA
						1
2	3	4	5	6	7	8
9	10	11	12	13	14	15
16	17	18	19	20	21	22
23	24	25	26	27	28	29
30	31					

AUGUST						
SU	MO	TU	WE	TH	FR	SA
		1	2	3	4	5
6	7	8	9	10	11	12
13	14	15	16	17	18	19
20	21	22	23	24	25	26
27	28	29	30	31		

SEPTEMBER						
SU	MO	TU	WE	TH	FR	SA
					1	2
3	4	5	6	7	8	9
10	11	12	13	14	15	16
17	18	19	20	21	22	23
24	25	26	27	28	29	30

OCTOBER						
SU	MO	TU	WE	TH	FR	SA
1	2	3	4	5	6	7
8	9	10	11	12	13	14
15	16	17	18	19	20	21
22	23	24	25	26	27	28
29	30	31				

NOVEMBER						
SU	MO	TU	WE	TH	FR	SA
			1	2	3	4
5	6	7	8	9	10	11
12	13	14	15	16	17	18
19	20	21	22	23	24	25
26	27	28	29	30		

DECEMBER						
SU	MO	TU	WE	TH	FR	SA
					1	2
3	4	5	6	7	8	9
10	11	12	13	14	15	16
17	18	19	20	21	22	23
24	25	26	27	28	29	30
31						

■ HOLIDAY\* (PLACE OUT ON WEDNESDAY)

■ CHRISTMAS TREES

■ RECYCLE

■ YARD TRIMMINGS (NONE IN JAN, FEB)

■ CLOSURE (EMPLOYEE PROFESSIONAL DEVELOPMENT DAY)

**TRASH IS COLLECTED WEEKLY**



505.662.8163 | [solidwaste@lacnm.us](mailto:solidwaste@lacnm.us)  
[www.losalamos/gogreen](http://www.losalamos/gogreen)





## Residential Sustainability Report

Service Period: October 2022

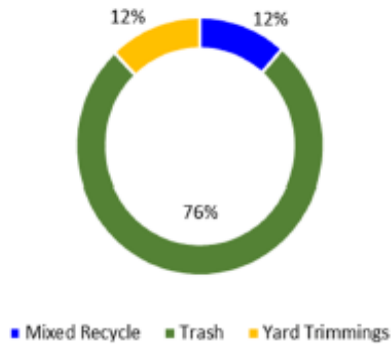
October Diversion Rate: 24%



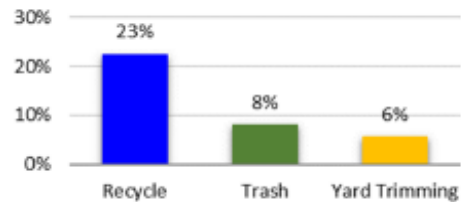
LOS ALAMOS

The *diversion rate* is the percent of recyclable and compostable material diverted from the landfill.

### Monthly Collection Report

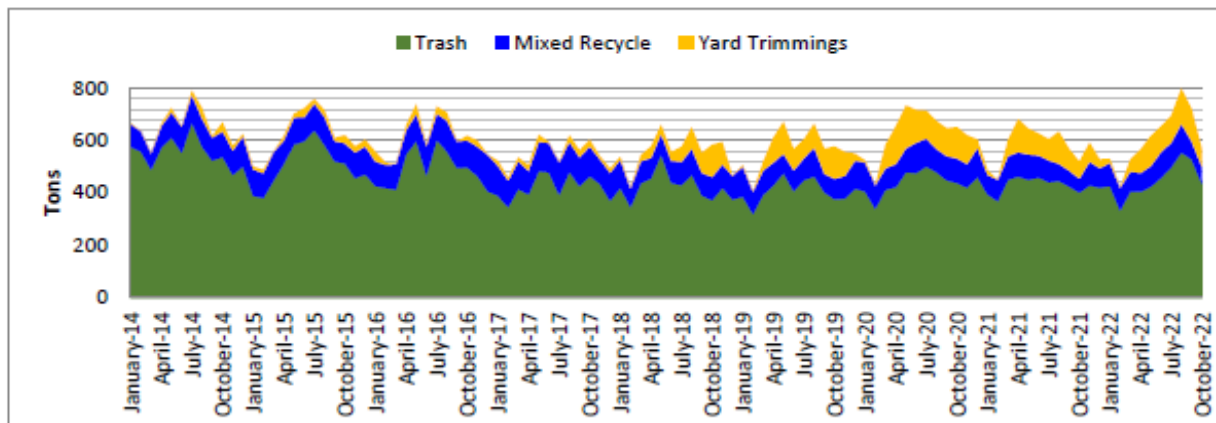


### % Change Previous Year

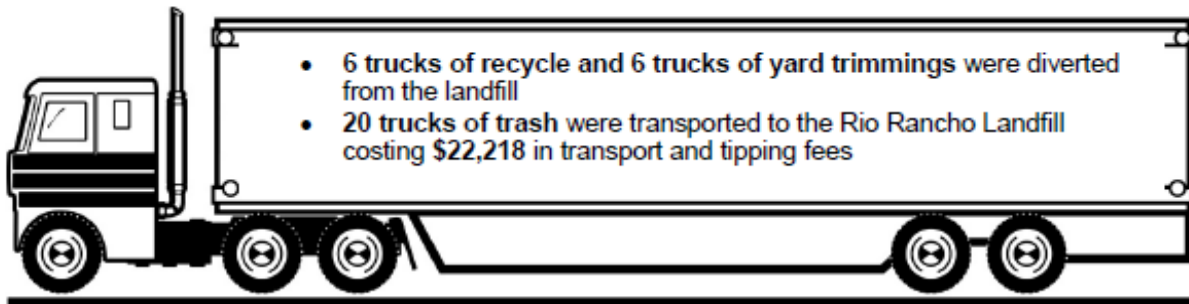


	Oct-21	Oct-22
Yard Trimming	64.97	68.72
Recycle	53.44	65.47
Trash	401.01	433.99

In September by recycling and composting Los Alamos County reduced GHG emissions by ~360 tons



In 2022 by recycling and composting Los Alamos County reduced GHG emissions by ~4,443 tons



For more information contact Environmental Services Division at 505.662.8163 or email [solidwaste@lacnm.us](mailto:solidwaste@lacnm.us)

## STATS Update

### *Facilities work order stats:*

---

*299 Total work orders*

*82 New work orders*

*89 Completed work orders*

*17 Immediate response working hours:*

*3 Emergency call outs after hours*

---

## Meeting Our Goals

In accordance with the strategic goal to invest in infrastructure, Capital Projects & Facilities staff focus on maintaining County facilities. Facilities maintenance responses to power outages included disruptions to controls at the Mesa Public Library and Justice Center.

Toward the goal of improving our recreational amenities, staff continue to advance recreation projects in their various stages of planning, design, and construction, including the Leisure Lagoon, Improvements at the Golf Course, North Mesa Shared-Use Gym, and Tennis Complex.

## News & Updates

Staff and the design team presented the Tennis Complex project to the Parks and Recreation Board November 10, 2022, where Overlook Park was the location put forward as a recommendation to Council. Project information can be found at following link: [https://www.losalamosnm.us/government/departments/public\\_works/public\\_works\\_projects](https://www.losalamosnm.us/government/departments/public_works/public_works_projects)

In October, Phase 1 of the Golf Course project advertised for bid. Phase 1 includes improving Holes 4 through 18, to include tees, bunkers, greens, permanent restrooms, targeted cart path upgrades and deferred maintenance. State law requires contractors to hold a New Mexico contractor's license to be eligible to submit a bid. The time to obtain a license is currently taking six to eight weeks. The bid opening date was extended to November 29, 2022 to allow time for interested out-of-state contractors to obtain a New Mexico license.

Facilities staff have been working at several locations to repair controls and failed equipment, some related to the recent power issues. One was the Justice Center 911 Server room air conditioning unit which suffered a compressor failure. Exterior lighting at the Golf course was checked and repaired to ensure sufficient lighting for patrons in the evening hours.

## Connecting with the Public

On a sunny Thursday, November 17, Public Works staff and the golf course design team met with the community for an in-person site visit of the golf course to review Phase 2 design concepts on the ground. Phase 2 of the project includes development of several design concept options for improving Holes 1 through 3, reconfiguring the driving range to improve safety, and other improvements such as practice area and cart path upgrades.

## Looking Ahead

The construction contract for Phase 1 of the Golf Course project is anticipated to be on the December 6, 2022 Council agenda for consideration of award.

## STATS Update

*268 Supported events*

## Meeting Our Goals

The Custodial Division continues to promote innovative approaches, conscientious stewardship and outstanding customer service while delivering clean and safe results to the County.

## News & Updates

The increase in reservations continued during the Month of November due in part to weddings and holiday parties, and bookings are up significantly for the fall months compared to this time last year. We are averaging two large events each week at Fuller Lodge and some Recreation events have started up again after a long hiatus.

## Connecting with the Public

Custodial staff supported the following public events:

Fuller Lodge – 44

White Rock Activity Center – 39

WR Fire Station #3 – 4

BESC – 21

WR Town Hall – 30

Municipal Building – 16

## Looking Ahead

The Green Seal Certification process was restarted after a year and a half delay due to Covid. The goal is to have this “green cleaning” certification by the first quarter of 2023. A second lead custodian position is currently being advertised. This position will be in the evenings and will manage the floor work schedule for County facilities. The goal is to provide quarterly floor maintenance at all our buildings.

## STATS Update

247 Work orders entered

158 Work orders completed  
with-in 72 hours

32 Work orders remain  
open

67 Work orders are  
preventive maintenance

180 Work orders are  
repairs

## Meeting Our Goals

Fleet is focused on keeping vehicles and equipment in top shape so our Los Alamos County customers can provide quality services to the residents of Los Alamos and White Rock. Fleet also provides a Motor Pool service that is located at the Municipal building available to County staff.

## News & Updates

I would like to give a big THANK YOU to Fleet Mechanics for coming in on the holiday weekend to catch up on Transit PM's and repairs.

Fleet has received 4 units that will be placed into service soon.

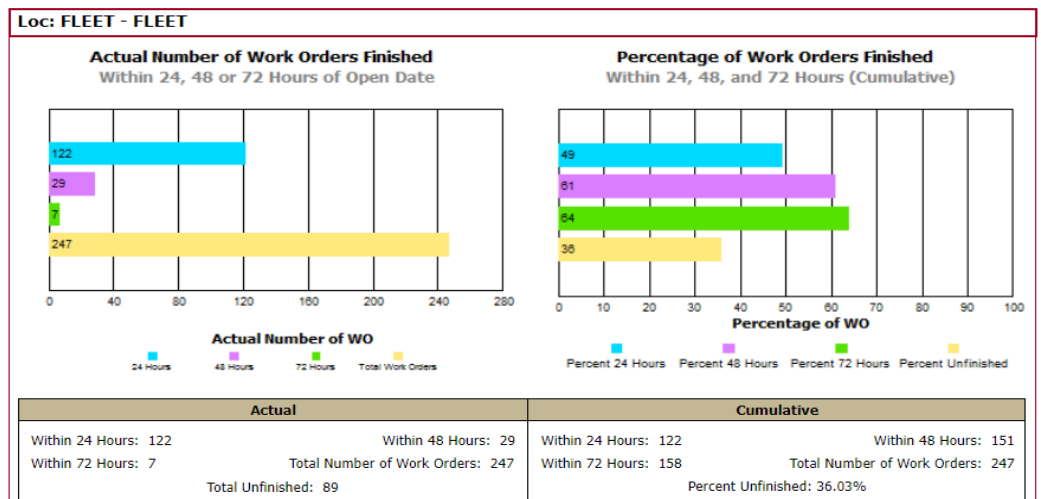
We have completed an auction of 10 units and will be conducting another auction soon.

Fleet and Transit conducted a question and answer session with drivers and mechanics on items concerning buses. We also had the opportunity to show the drivers the underside of buses and critical areas to check for.

## Looking Ahead

Fleet has been working on the FY24 replacement vehicle list.

Mechanics continue to work on snow equipment to prepare for winter months.





## STATS Update

*20 Permits Issued*

*6 Potholes filled*

*352 Miles Swept*

*5 Invoices Processed*

*72 Customer Calls*

*15 Streetlight bulbs installed*

*9 Tons of Asphalt Used*

*120 Lines Located*

*1.5 Yards of Concrete Used*

## Meeting Our Goals

Traffic and Streets Division met county council goals in the month of November by maintaining roadways, sidewalks, performing vegetation control, striping county owner parking lots and property, and striping roadway islands.

## News & Updates

Streets crews have been repairing asphalt countywide during the month of November. They have crack sealed various location in the townsite and White Rock

Crews closed Central Ave. to repair sections of asphalt. The work is being done at night to lessen the impact of traffic during the daytime.

Crews have been performing vegetation control countywide and will continue over the next two months in preparation for winter. This will help the drains to be cleared when the snow melts along our right of way.

Crews have placed sand at the following locations to assist traffic when the intersections are iced over.

1. Esperanza (near mailboxes)
2. North Mesa Road (hill)
3. Quemazon Road (at intersection of North Road)
4. Quemazon Road (near mailboxes)
5. Cheryl Court (between 337 and 375 in shady area)
6. Other locations as requested by staff or citizens

Traffic electricians installed 5 streetlight poles, arms, and fixtures on DP Rd project, connected power to new streetlights on DP Rd., responded to San Ildefonso Rd for a bus that knocked down a streetlight and repaired the streetlight.

Crews will be assisting the Los Alamos Commerce and Development Corporation (LACDC with the WinterFest Holiday Light Parade on December 3<sup>rd</sup>.

## Connecting with the Public

We connected with the public by responding to their concerns over lighting, vegetation control and assisting with permits.

## Looking Ahead

Crews will be preparing for winter and potential snowstorms. New hires are obtaining their Commercial Drivers' Licenses (CDL), snow and ice material is being stockpiled, and equipment is being prepared for the season.

## STATS Update

*Unlinked Passenger Trips  
(UPT): 25,573*

*Fixed-Route UPT: 24,506*

*Demand-Response UPT: 293*

*Special UPT: 774*

*Service Days: 20*

*UPT per Service Day: 1,279*

*UPT per Service Mile: .69*

*Service Disruptions: 4*

*On-time Timepoint  
Departures: 81%*

*On-time Paratransit Trips:  
85%*

*Buses with Defective ITS  
Systems: 61%*

*Customer Complaints: 3*

## Meeting Our Goals

**Airport** - The airport continues to work toward improving the transportation infrastructure in the County. This past year aircraft maintenance has been restored at the airport, a new weather station has been installed, preliminary engineering is being completed on the Taxiway F Relocation Safety project, and steps are underway to update aircraft fueling and establish Jet A fuel service.

**Atomic City Transit** continues to move forward with LSC Transportation Consults, Inc on the update to the Atomic City Transit Comprehensive Transportation Study and five-year Service Plan update. The consultants have provided Atomic City Transit staff a draft technical report regarding all the statistical information regarding public transportation within Los Alamos County including stakeholder and community comments. LSC Transportation Consults will be preparing a summary recommendation report in the month of December 2023.

## News & Updates

**Airport** - The new Aviation Weather Observation System (AWOS) has been installed and commissioned by the FAA. This system was fully grant funded by the NMDOT. The manufacturer, Mesotech, has been in business since 1993 working primarily with military customers in the US. This is the first time this system has been installed at a civilian airport in New Mexico.

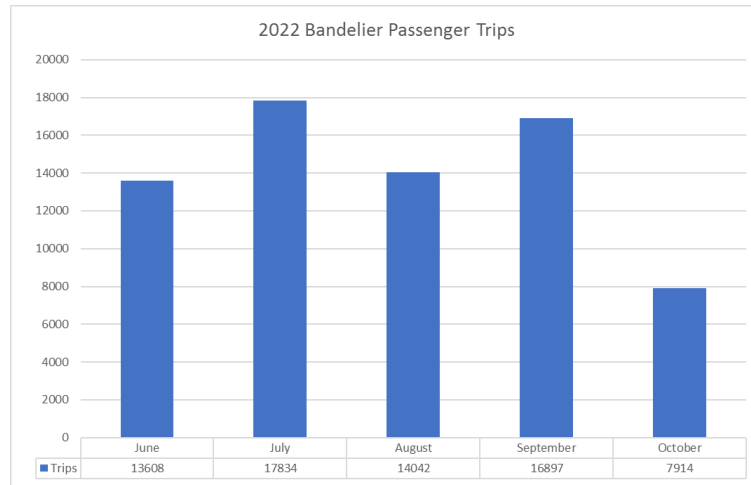
The bid opening for the fuel farm was conducted Nov 17<sup>th</sup>. The County received one bid. The NMDOT provided \$1.9 million in grant funding for this project. The bid, not including GRT or a contingency, exceeds this amount by \$271,035.00. Staff continues to evaluate this project for possible options to proceed.

**Transit** - Purchase of the two electric buses and charging stations continue to undergo contract negotiations. As these contract negotiations are completed and the order gets placed, we can expect the new buses in about 12 to 18 months from the date of order. With the increase interest of electric powered buses throughout the United States, work production has been delayed.

Bandelier Shuttle Service is complete for the 2022 season. Bandelier National Monument is open to the public to drive into the park 9:00 am to 5:00 pm. Monday through Sunday.

The seasonal ridership for 2023 was healthy. The graph below shows ridership by month from mid-May 2022 through mid-October 2022.





Atomic City Transit supported the October Pumpkin Flow and Fireworks show at Overlook Park on October 29, 2022. Atomic City Transit provided free park and ride shuttle services from Sullivan Field and White Rock Center from 3:00 pm to 9:30 pm. The total ridership for the event was 774 with a combined mileage of 608.

## Connecting with the Public

**Airport** - The Los Alamos airport continues to be the agency working on noise abatement concerning low flying EMS helicopters over our community. The usual route from northern New Mexico to the hospitals in Albuquerque impacts White Rock and Pajarito Acres. The route in and out of the Los Alamos Medical Center impacts the town site and North Mesa. With the constant changing of crews for the services the issue does not always get passed along. The airport receives a noise complaint it is referred to the service for follow up. All the services have been positive in their response.

## Promotions



**Eric Ulibarri was recently promoted to County Engineer.**



**Karen Henderson was recently promoted to Senior Engineer.**

## Staff Members Highlight of the Month

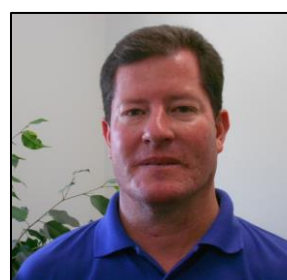
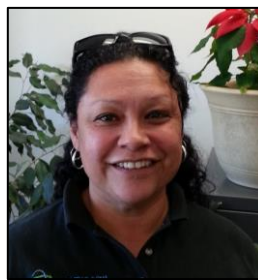


Fifteen Years of Service - Atomic City Transit would like to acknowledge Cliff Sisneros, Transit Operator 2 in the Transit Division. Cliff started with Atomic City Transit November 2007. Cliff is currently assigned to perform paratransit services which is transportation for persons with disabilities. Cliff takes pride in his work and is loved by his customers. Cliff always takes time to take the extra mile to make his customers feel at ease and safe during their trip. Transit Division has experienced a lack of transit operators for the Bandelier Shuttle Service.

## Staff Anniversaries

Atomic City Transit would like to congratulate the following employees on their employment anniversaries in November.

- ❖ Terry Burge – 15 years of service
- ❖ Ramon Trujillo – 15 years of service
- ❖ Corinne Salazar – 15 years of service
- ❖ Paul Lucero – 13 years of service



## Projects



*Pumpkins for composting from the Pumpkin Glow*



*Hilltop House Demolition*

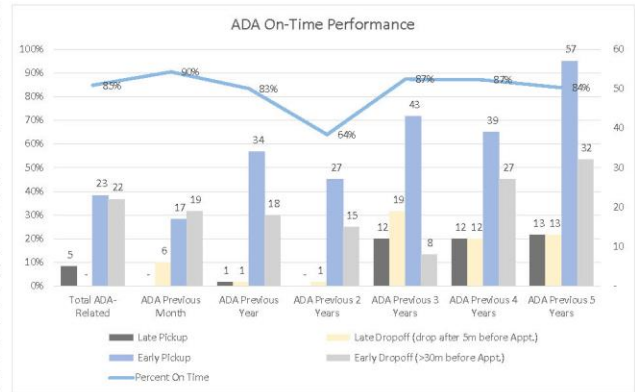
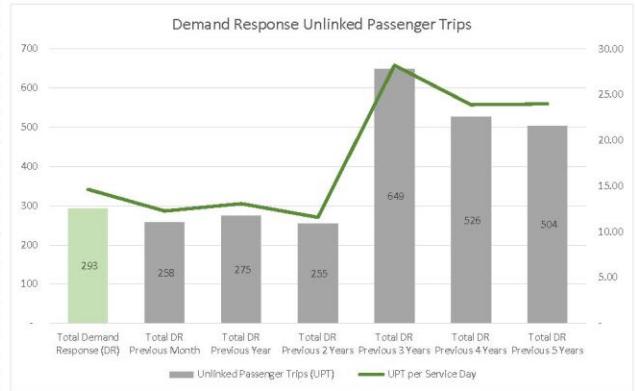
# Atomic City Transit - Demand Response Ridership and Statistics

October 2022

	Total Demand Response (DR)	Total DR Previous Month	Total DR Previous Year	Total ADA-Related	Total DAR	Total DAR-Special
NTD Service Information						
Vehicles Operated in Max Service	2	2	2	2	1	-
Unlinked Passenger Trips (UPT)	293	258	275	229	64	-
UPT Ambulatory	273	236	216	210	63	-
UPT Non-Ambulatory	20	22	59	19	1	-
UPT Evening DAR	19	17	13	-	19	-
UPT Daytime DAR	41	33	12	-	41	-
UPT Regional-Linked	149	110	167	142	7	-
Companions	13	9	19	11	2	-
PCAs	36	21	8	34	2	-
Total Vehicle Miles (VM)	3,316	2,986	3,527	3,022	294	-
Total Vehicle Hours (VH)	231	223	244	207	24	-
Total Revenue Miles (RM)	2,052	2,044	2,658	1,954	98	-
Total Revenue Hours (RH)	154	156	159	150	5	-
Regional-Linked Miles	1,280	954	1,476	1,204	76	-
Regional-Linked Hours	50	36	60	48	2	-
Passenger Miles	1,985	1,472	2,024	1,754	231	-
Passenger Hours	91	70	92	77	14	-
Service Days	20	21	21	20	18	-
Weekdays	20	21	21	20	18	-
UPT per RM	0.1	0.1	0.1	0.1	0.7	-
UPT per RH	1.9	1.6	1.7	1.5	13.9	-
UPT per Service Day	14.7	12.3	13.1	11.5	3.6	-
UPT per Weekday	14.7	12.3	13.1	11.5	3.6	-

Scheduling Stats						
Subscription	121	115	119	121	-	-
One Way Trips Requested	390	350	427	315	75	-
One Way Trips Performed	244	228	248	184	60	-
Advance Reservation	184	178	223	184	-	-
Same Day Reservation	60	50	25	-	60	-
Avg. Minutes to board	4	4	4	2	2	-
Avg. Minutes to Disembark	2	2	2	1	1	-

Capacity Metrics						
Missed Trip (Due to Vehicle Late)	-	-	-	-	-	-
Trips On Time	196	203	204	156	40	-
Percent On Time	80%	89%	82%	85%	67%	-
Early Offer	20	16	12	17	3	-
Late Offer	1	4	2	-	1	-
Late Pickup	5	-	1	5	-	-
Excessively Late Pickup (>15m after window)	2	-	-	2	-	-
Late Dropoff (drop after 5m before Appt.)	1	6	1	-	1	-
Excessively Late Dropoff (>10m after Appt.)	-	-	1	-	-	-
Early Pickup	43	25	43	23	20	-
Excessively Early Pickup (>15m before window)	6	2	4	3	3	-
Early Dropoff (>30m before Appt.)	25	19	18	22	3	-
Excessively Early Dropoff (>45m before Appt.)	-	1	1	-	-	-
Trip Over 45 min	6	2	3	6	-	-
Trip Over 60 min	1	-	-	1	-	-
Over Fixed-Route Duration Est.	11	5	2	8	3	-
>15m Over Fixed-Route Duration Est.	2	-	-	2	-	-







## October 2022 Ridership Report

LOS ALAMOS

Route	October Trips					% Chg				Oct Rev. Miles					Oct Rev. Hours					YTD Trips
	2018	2019	2020	2021	2022	(from 2018)	(from 2019)	(from 2020)	(from 2021)	2018	2019	2020	2021	2022	2018	2019	2020	2021	2022	
1 Downtown	5,497	5,887	811	3,176	4,181	-23.9%	-29.0%	415.5%	31.6%	3,965	4,145	2,863	3,673	3,752	328.5	343.5	210.5	273.0	282.0	39,047
2M White Rock - Main Hill	2,757	2,853	581	1,063	1,801	-34.7%	-36.9%	210.0%	69.4%	7,869	8,254	5,776	7,513	7,140	296.7	311.3	218.3	284.2	270.7	17,383
2T White Rock - Truck Rt	1,660	1,613	336	841	892	-46.3%	-44.7%	165.5%	6.1%	7,285	7,616	5,302	7,009	6,638	287.1	300.2	202.3	273.7	260.0	11,089
2P White Rock - Peak	430	682	-	-	-	0.0%	0.0%	0.0%	0.0%	3,028	3,239	-	-	-	111.9	119.6	-	-	-	-
3 Central / Canyon	2,997	2,923	-	1,705	318	-89.4%	-89.1%	0.0%	-81.3%	5,591	5,845	-	5,284	1,258	279.4	292.1	-	265.9	63.2	14,405
4 North Community	3,363	3,483	-	1,967	2,388	-29.0%	-31.4%	0.0%	21.4%	4,051	4,235	-	4,079	3,868	286.0	299.0	-	273.0	260.0	14,589
5 Barranca Mesa	1,484	2,012	-	802	1,091	-26.5%	-45.8%	0.0%	36.0%	4,451	4,654	-	4,250	4,034	283.4	296.3	-	270.6	257.3	9,264
6 North Mesa	6,668	7,709	441	3,305	3,389	-49.4%	-56.0%	668.5%	2.5%	6,306	6,592	2,709	3,917	4,759	426.4	445.8	191.8	273.4	330.4	31,269
<b>Fixed-route subtotal</b>	<b>24,886</b>	<b>27,162</b>	<b>2,169</b>	<b>12,859</b>	<b>14,060</b>	<b>-43.5%</b>	<b>-48.2%</b>	<b>548.2%</b>	<b>9.3%</b>	<b>42,547</b>	<b>44,581</b>	<b>16,650</b>	<b>35,726</b>	<b>31,450</b>	<b>2,299.5</b>	<b>2,407.7</b>	<b>823.0</b>	<b>1,913.7</b>	<b>1,723.5</b>	<b>137,046</b>
7 North Mesa Expr	1,486	1,359	-	648	902	-39.3%	-33.6%	0.0%	39.2%	380	391	-	369	302	22.9	23.6	-	25.5	19.9	6,003
8 North Community Expr	916	1,065	-	226	640	-30.1%	-39.9%	0.0%	183.2%	128	141	-	129	129	8.7	9.5	-	8.7	7.7	3,252
9 Aspen Expr	875	889	-	274	139	-84.1%	-84.4%	0.0%	-49.3%	99	109	-	104	168	7.0	7.7	-	7.0	8.1	2,125
10 Barranca Expr	1,369	942	-	196	456	-66.7%	-51.6%	0.0%	132.7%	165	182	-	169	169	10.3	11.4	-	10.3	9.3	2,567
11 White Rock Expr	1,051	1,001	-	425	395	-62.4%	-60.5%	0.0%	-7.1%	336	370	-	341	336	13.3	14.7	-	13.3	13.3	3,442
<b>Express route subtotal</b>	<b>5,697</b>	<b>5,256</b>	<b>-</b>	<b>1,769</b>	<b>2,532</b>	<b>-55.6%</b>	<b>-51.8%</b>	<b>0.0%</b>	<b>43.1%</b>	<b>1,109</b>	<b>1,192</b>	<b>-</b>	<b>1,110</b>	<b>1,104</b>	<b>62.3</b>	<b>66.8</b>	<b>-</b>	<b>64.8</b>	<b>58.3</b>	<b>17,389</b>
12 Bandelier	13,877	14,633	-	286	7,914	-43.0%	-45.9%	0.0%	2667.1%	8,812	8,607	-	1,622	2,097	341.1	333.2	-	63.5	349.1	70,295
Dial-a-Ride	93	160	-	48	64	-31.2%	-60.0%	0.0%	33.3%	771	982	-	87	98	48.7	55.9	-	4.4	4.6	678
ACT Assist	526	487	93	227	229	-56.5%	-53.0%	146.2%	0.9%	3,908	3,588	297	2,571	1,954	214.0	213.2	10.9	154.3	149.8	2,299
Special Services	40	15	162	302	774	1835.0%	5060.0%	377.8%	156.3%	135	45	1,361	243	545	16.8	10.5	185.1	23.7	40.6	2,625
<b>System total</b>	<b>45,119</b>	<b>47,713</b>	<b>2,424</b>	<b>15,491</b>	<b>25,573</b>	<b>-43.3%</b>	<b>-46.4%</b>	<b>955.0%</b>	<b>65.1%</b>	<b>57,283</b>	<b>58,996</b>	<b>18,307</b>	<b>41,359</b>	<b>37,248</b>	<b>2,982</b>	<b>3,087</b>	<b>1,019</b>	<b>2,224</b>	<b>2,326</b>	<b>230,332</b>



Total Passenger Trips to Date: 6,083,401

### Significant Service Adjustments and Special Events

- **All Month:** Due to staffing shortages, Route 2P did not operate
- **10/29/22 Special Service for Pumpkin Glow:** 774 passenger trips provided
- **10/1/22 - 10/16/22:** Due to staffing shortages, Peak service did not operate on Routes 1 and 6
- **10/27/22:** Route 1 mid-day Peak service did not operate due to driver shortage
- **10/10/22:** Service did not operate due to the holiday (except Route 12)
- **10/1/22 - 10/24/22:** Route 3 did not operate due to staffing shortages. Service resumed at 4:35 pm on 10/24

## Capital Improvement Project Updates

Los Alamos County is working on a variety of projects that support quality of life, infrastructure, and economic development initiatives. A summary of the project and additional information can be found on our website – <https://lacnm.com/PW-Projects>.

Attachment A

Project Name	Dept(s)	Update
<b>Sherwood Boulevard Reconstruction</b>	PW	Construction by Star Paving is complete with punch list work underway.
<b>33rd/34th Street and Arkansas Project</b>	PW	Bids were received on November 3 <sup>rd</sup> with the evaluation committee recommending award at Council on November 29 <sup>th</sup> . Construction is anticipated to begin in April 2023.
<b>Urban Trail Phase I and II</b>	PW	The design package is being finalize and bid documents in process for advertisement January 2023 for a construction start in Spring 2023.
<b>DP Road Phase II</b>	PW	Bid documents are being finalized for advertisement in December 2022 for a construction start in early Spring 2023.
<b>Loma Linda Road Improvements</b>	PW	The scope of work for this new project involves full reconstruction of the Loma Linda subdivision roadway infrastructure. This in-house design is underway with <u>construction anticipated in late Summer 2023.</u>
<b>Rose Street</b>	PW	The scope of work for this project involves full reconstruction of Rose Street from Central to Peach. This is a joint project with the Department of Public Utilities and includes full road reconstruction along with utility upgrades. The design is underway with construction anticipated in late
<b>Trinity Safety and ADA</b>	PW	The design alternatives are being developed with a public input meeting anticipated in February/March 2023. More details to come.
<b>Finch Street</b>	PW	The scope of work for this new project involves full reconstruction of the Loma Linda subdivision roadway infrastructure. This in-house design is underway with construction anticipated in late Summer 2023.
<b>Canyon Rim Trail Phase III</b>	PW	The scope of work for this project involves full reconstruction of Rose Street from Central to Peach. This is a joint project with the Department of Public Utilities and includes full road reconstruction along with utility upgrades. The design is underway with construction anticipated in late Summer 2023.
<b>Betty Ehart Senior Center: Kitchen Equipment Upgrade</b>	PW	The design alternatives are being developed with a public input meeting anticipated in February/March 2023. More details to come.



<b>Golf Course Site Development Improvements</b>	PW, CSD	<p>Phase 1 includes improving Holes 4 through 18, to include tees, bunkers, greens, permanent restrooms, targeted cart path upgrades and deferred maintenance. Staff held a public meeting for review of sixty percent (60%) construction drawings. Tentative schedule if to solicit for bids to construct Phase 1 in October and award construction contract in December 2022.</p> <p>Phase 2 includes development of several design concept options for improving Holes 1 through 3, reconfiguring the driving range to improve safety and eliminate the use of safety netting, and other improvements such as practice area and cart path upgrades. A Design Workshop for Golf Course Phase 2 Design Concepts that includes a site visit is open to the public and scheduled for September 29, 2022.</p> <p>For more detailed information on scope, schedule, upcoming meetings, and past meetings, please visit:  <a href="https://lacnm.pw/golfcourseimprovements">https://lacnm.pw/golfcourseimprovements</a></p>
<b>LAC/LAPS North Mesa Shared-Use Gymnasium</b>	PW, CSD	A Joint Session was held August 29, 2022, between Council and the Los Alamos Public School Board. The School Board and Council selected Site C for the project. Council indicated a preference for the large program and directed the County Manager to return with revised financing and capital improvement program (CIP) plans as part of the fiscal year 2024 budget development process for both options of the large program and Phase 1 of the large program giving the consideration of potential available funding.
<b>LAC/LAPS White Rock Shared-Use Recreation Space: Design</b>	PW, CSD	Pursuant Council direction June 13, 2022, to develop necessary agreements for the County's partnership with LAPS, staff prepared a draft Memorandum of Agreement that was submitted for legal review.
<b>Leisure Lagoon</b>	PW, CSD	The variable frequency drives (VFDs) were delivered and installed, allowing the leisure lagoon pool to be plastered and then filled with water to cure, and for related equipment checks to begin.
<b>Tennis Court with Lights: Site Selection and Design</b>	PW, CSD	The Site Evaluation kickoff meeting was held August 5, 2022. The project was presented to the Parks & Recreation Board at the November 10th meeting.
<b>White Rock Visitors Center Complex: Restrooms and Food Truck Pad: Design</b>	PW, CDD	Staff and Stakeholders reviewed conceptual site layouts and provided comments.
<b>Women's Army Corps (WAC) Building Renovations</b>	PW	Design continues. Staff presented the project to the Tourism Implementation Task Force and the Historic Preservation Advisory Board.