

Broadband Overview

Broadband was discussed with the County Council at the October 27, 2020 Council meeting. While no formal direction was given, the recap at the end of the discussion highlighted the following:

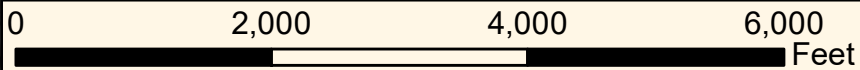
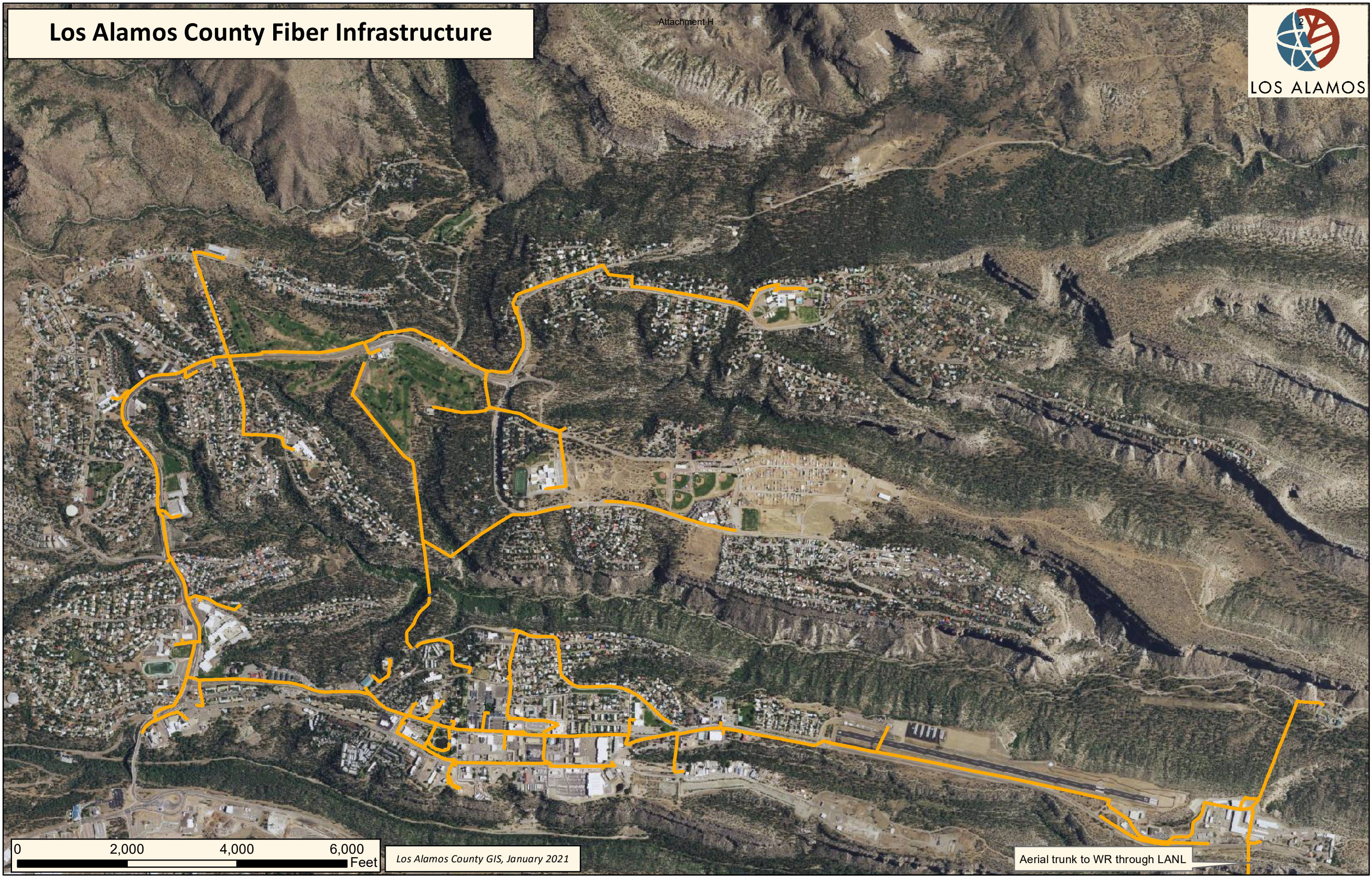
- ▶ No interest at this point in time in re-doing a large project study similar to prior ones
- ▶ Staying engaged with CenturyLink for potential alternate fiber pathway access
- ▶ Follow-up with RediNet regarding status of endpoints in Los Alamos and potential future expansion
- ▶ Consider formalizing the County's fiber conduit backbone policy and addressing new developments
- ▶ Possible further discussion regarding a local option and an enterprise fund approach
- ▶ Possibly updating previous cost estimates for fiber to everyone
- ▶ Possible Survey of availability, satisfaction, willingness to pay
- ▶ Possible assessment of new technologies and expanding Wi-Fi
- ▶ Possibly evaluating LEDA opportunities
- ▶ Focus on incremental approach to improvements

On January 3, 2021, the Council received a letter from citizens asking that the Council make broadband access a priority.

The following two slides show existing County fiber conduit and are provided as background information.

Los Alamos County Fiber Infrastructure

Attachment H



Los Alamos County GIS, January 2021

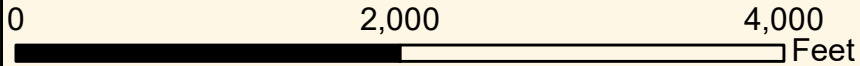
Aerial trunk to WR through LANL

Los Alamos County Fiber Infrastructure

Attachment H



Aerial trunk to town through LANL



Los Alamos County GIS, January 2021