

CO-OP PARK

LOS ALAMOS, NEW MEXICO

A COMMUNITY PARK IN PARTNERSHIP
WITH SIX LOCAL COOPERATIVES



Los Alamos
coop Market



N^{del} Norte[®]
CREDIT UNION



To learn how you can contribute to this community project, please contact:

Matt Schmidt, CEO Los Alamos Schools Credit Union
matt@lascu.org | 505-662-3421 | cooppark.org



What does the Co-Op Park offer?

- Sense of community
- Live concerts and performances
- Community garden
- Outdoor youth education with Little Forest
- Additional green space in downtown Los Alamos
- A place for youth to safely gather

What is the impact on the community?

- Inclusive-access to all community members, including elderly-disabled-children
- A resource for community members, including businesses and organizations
- The Park Runs on the Sun: Carbon positive with solar energy credit

How can I support the Co-op Park?

Our Keep It Co-Op! partners have provided seed funding to start this venture. Our fundraising goal is to raise an additional \$100K from community businesses and individuals to make the Co-op Park a reality for everyone to enjoy. Will you join us? Donations for Phase I of the development and construction of the Co-op Park, located adjacent to the Los Alamos Schools Credit Union's new building at 1010 Central Ave., are being accepted now through May 31, 2021.

Donation Levels:

As a gift to you for your generosity, your recognition name will be engraved on a 'donation leaf' installed on a bronze Donor Tree display in the park. We thank you for your support!



Tier 1 Benefits:

- Engraved name on leaf of bronze Donor Tree



Tier 2 Benefits:

- Engraved name on leaf of bronze Donor Tree
- Name on additional donor wall plaque



Tier 3 Benefits:

- Engraved name on leaf of bronze Donor Tree
- Name on additional donor wall plaque
- Name/logo on additional individual plaque

Will you join us in completing the Phase 1 Costs to make the Co-Op Park a reality to benefit the Los Alamos community? Contribute today by contacting:

Matt Schmidt, CEO Los Alamos Schools Credit Union
matt@lascu.org | 505-662-3421 | coopark.org

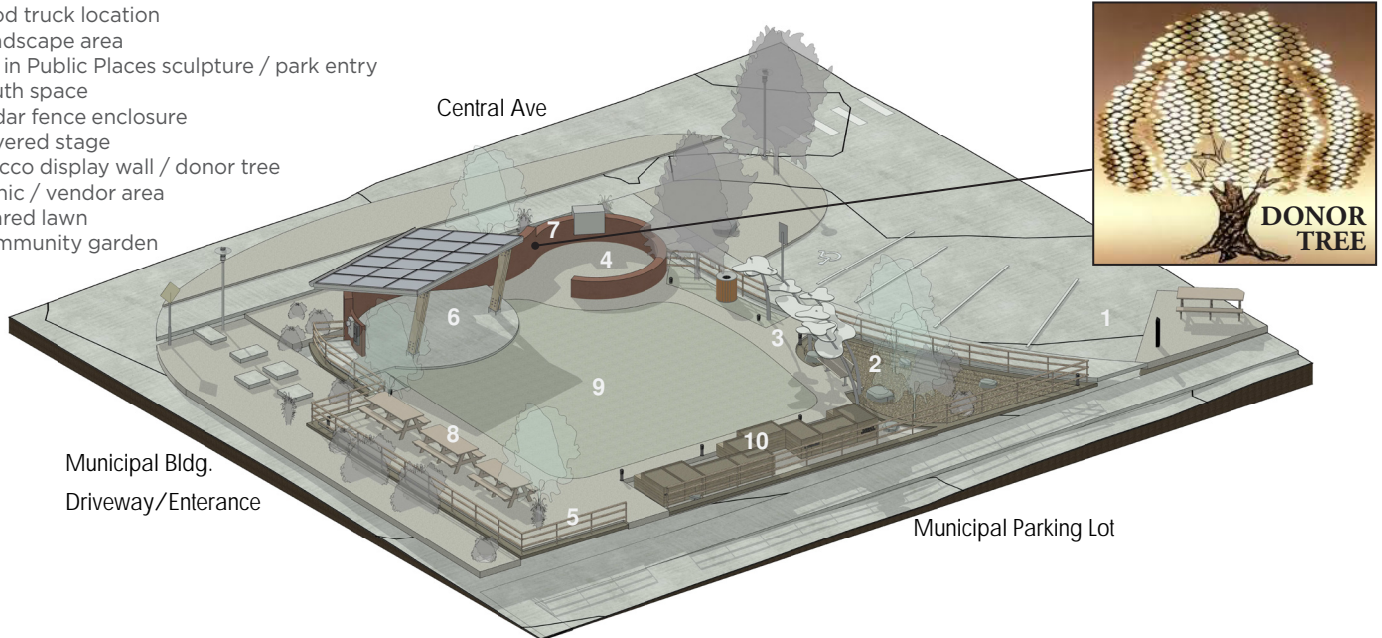


CO-OP PARK

LOS ALAMOS, NEW MEXICO



- 1 Food truck location
- 2 Landscape area
- 3 Art in Public Places sculpture / park entry
- 4 Youth space
- 5 Cedar fence enclosure
- 6 Covered stage
- 7 Stucco display wall / donor tree
- 8 Picnic / vendor area
- 9 Shared lawn
- 10 Community garden



PHASE I ESTIMATED COSTS

Cinderblock wall & stucco	\$27,000
Cedar Fence	\$17,000
Electric infrastructure/lighting	\$15,000
Landscaping	\$18,000
TOTAL COSTS PHASE I	\$77,000

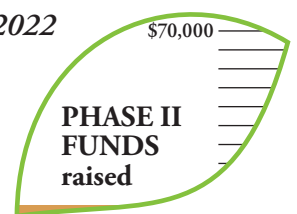
Phase I est. completion: June 2021



PHASE II ESTIMATED COSTS

Stage Canopy	\$25,000
Stage Concrete/ramp/handrails	\$18,000
Stage electric/lighting	\$12,000
Solar panels	\$15,000
TOTAL COSTS PHASE I	\$70,000

Phase II est. completion: Spring 2022



Will you join us in raising the \$22,000 remaining of the Phase 1 costs to make the Co-Op Park a reality for the Los Alamos community? Contribute today by contacting:

Matt Schmidt, CEO Los Alamos Schools Credit Union
matt@lascu.org | 505-662-3421 | cooppark.org





Co-Ops invest in your New Mexico community

The Sixth Cooperative Principle: Cooperation among Cooperatives.

Cooperatives serve their members most effectively and strengthen the cooperative movement by working together.

In 2012 six Los Alamos cooperatives met for coffee to explore the idea of a cooperative marketing program: Bathtub Row Brewing, Del Norte Credit Union, Little Forest Playschool, Los Alamos Coop Market, Los Alamos Schools Credit Union, and Zia Credit Union. It only took one meeting for them to all agree this was a great idea and the Keep It Co-Op! movement was born. Since 2012, Keep It Co-Op! members have partnered with each other through food drives, community concerts, shred days, and membership promotions. This year, they are partnering on a much larger scale to benefit the Los Alamos community to help create a community park.

The Los Alamos Schools Credit Union is constructing a new facility at 1010 Central Avenue in Los Alamos, New Mexico, opening in Summer 2021. A green space approximately 80' x 80' in the northeast corner of LASCUs property was presented to the Keep It Co-Op! group as an opportunity to partner together to develop a community Co-Op Park. Phase I of the Co-Op Park, scheduled to be completed in 2021, includes landscaping, picnic tables, benches, raised gardens, shade canopies, a wall foundation, walls, stucco, fencing, and stage electrical. Phase II will be completed in 2022 and includes the stage foundation and stage canopy.

The six original Keep It Co-Op! members have committed to contribute financially to the Co-Op Park. Keep It Co-Op! members are seeking other financial support to make the Co-Op Park a reality. Del Norte LOV Foundation, the philanthropic arm of Del Norte Credit Union, is a donor to the Co-Op Park. Los Alamos Places & Spaces is a potential donor. Keep It Co-Op! is actively soliciting additional contributions from fellow community members to bring this community project to life. Will you contribute today?

To learn how you can contribute to this community project, please contact:

Matt Schmidt, CEO Los Alamos Schools Credit Union
matt@lascu.org | 505-662-3421 | coopark.org





The Six Cooperatives of Keep It Co-Op!

Bathtub Row Brewing CO-OP was up and running in 2015 as Los Alamos' first craft brewery and the fourth cooperatively run brewery in the United States after three years of hard work and the investment of its membership. *Learn more at www.bathtubrowbrewing.coop*

Del Norte Credit Union was founded in 1954 as Los Alamos Scientific Lab Credit Union and serving as the first financial institution in Los Alamos. The organization became a community charter in 1981 and expanded financial services and offerings to surrounding communities. *Learn more at www.dncu.com*

Little Forest Playschool was founded in 1951 by a group of local moms in the American Association of University Women. The first playgroup was composed of 15 children and cost .10 cents for juice and supplies. Little Forest is a cooperatively managed preschool for children aged two to five. Children are given the opportunity to learn the same way they do naturally, through exploration and play. *Learn more at www.facebook.com/littleforestplayschool/*

Los Alamos CO-OP Market joined the community in 2011, with a mission to serve Los Alamos County and our Northern New Mexico neighbors with local farm fresh and regional good food and wellness products in ecologically sustainable, socially responsible and economically friendly ways. *Learn more at www.losalamos.coop*

Los Alamos Schools Credit Union has been providing high-quality, low-cost financial services to the educational community in New Mexico's Los Alamos County since 1955 when a dozen or so teachers pooled their money to start the credit union. Today, Los Alamos Schools Credit Union serves nearly 1,800 members and recently expanded their membership to include an even broader education community in Los Alamos. *Learn more at www.lascu.org*

Zia Credit Union was organized and founded in 1955 by a group of individuals from Zia Company, support contractors for the Los Alamos National Laboratory. In 1975, management at Zia CU expanded its field of membership to serve the entire community. Since that time, it has further expanded membership to serve those who live, work or worship in Los Alamos, Rio Arriba, Taos and Santa Fe Counties. Zia Credit Union has branches in Los Alamos, Española and Santa Fe. *Learn more at www.ziacu.org*

