

Los Alamos Mesa Trail Rehabilitation

Parks & Recreation Board Update

Thursday, July 9, 2026 | 5:30pm | Municipal Building

1000 Central Ave, Los Alamos, NM



LOS ALAMOS

PROJECT TEAM



LOS ALAMOS

Eric Peterson

Open Space Specialist

Parks & Open Space Division

(505)-663-1776

eric.peterson@losalamosnm.gov



LOS ALAMOS

Cory Styron

Community Services Director

Community Services Department

(505)-662-8242

Cory.styron@losalamosnm.gov

Bohannon  **Huston**

Jared Lee

Engineering Principal

Tyler Smith

Engineer

Ciaran Lithgow

Planner



LOS ALAMOS 

Scope of Work

- This project includes developing and **preparing construction documents** for the **rehabilitation** of the Los Alamos **Mesa Trail**.
- The rehabilitation will **bring the trail up to ADA accessibility standards** and the Public Right of Way Accessibility Guidelines (PROWAG).
- Plans will include **full site design and details** required to advertise, bid, and construct the Project.
- This project will **expand accessible trail options** for residents of Los Alamos.



Prior Engagement

Community Listening Session #1 | March 4, 2026 | Fuller Lodge, 5:30pm

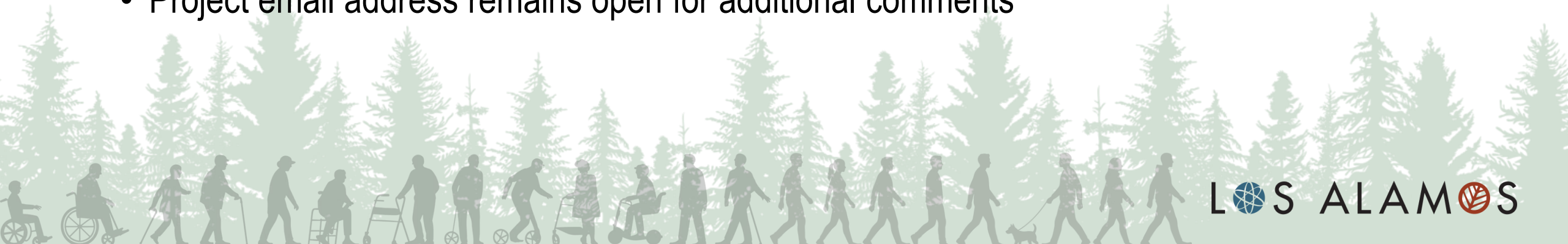
- Advertised online; nine attendees
- Study team presented project, existing trail deficiencies, and proposed realignment
- Key discussion with community:
 - Accessibility across all user groups
 - Materials selection – pros and cons of concrete, asphalt, and crusher fine
 - Adjacent trail connectivity and opportunities to improve wayfinding
- Project email address open for additional comments



Prior Engagement

Community Listening Session #2 | June 24, 2026 | Fuller Lodge, 5:30pm

- Advertised online; five attendees
- Study team presented refined realignment based on 90% drawings; fencing; and surfacing selection (asphalt)
- Key discussion with community:
 - Softness of asphalt
 - Vegetation management
- Project email address remains open for additional comments



Planned Improvements



Typical Section



- 10' wide path with 1' shoulder on each side
- Tie-in at assisted living facility will be 4'



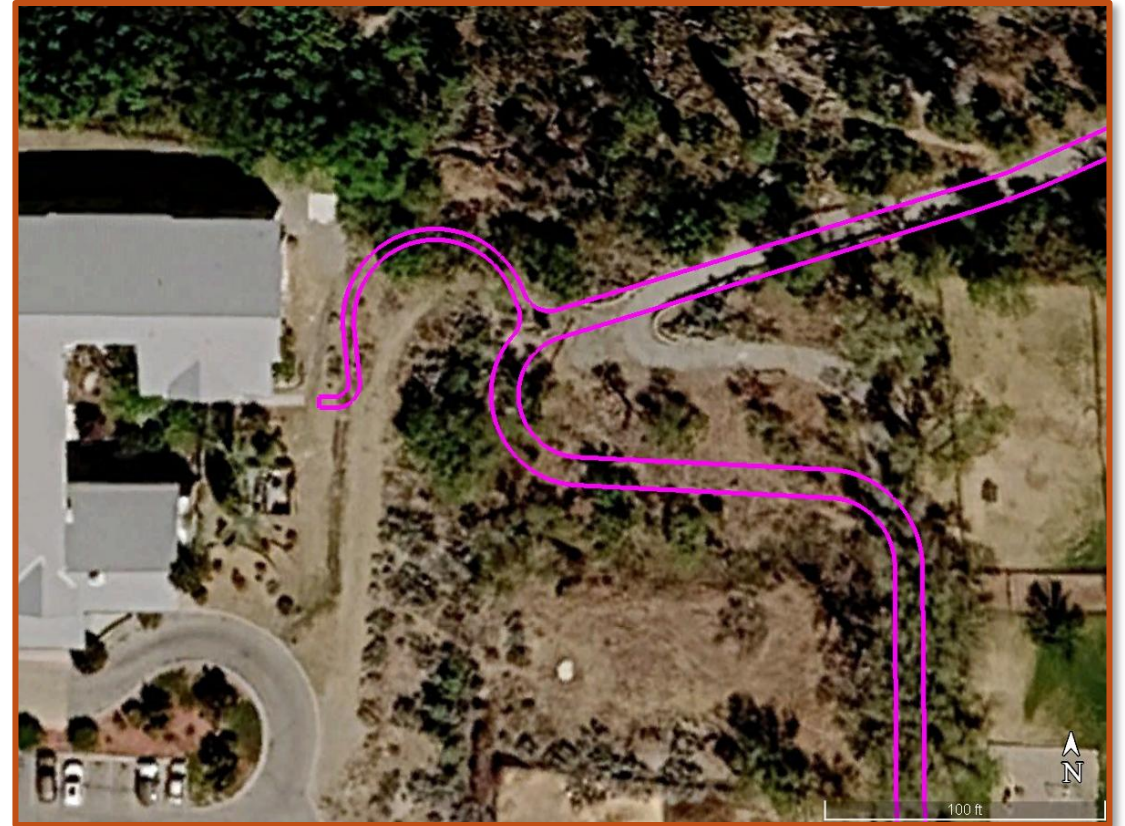
1'
Bench
(aka shoulder)

10'
Path*

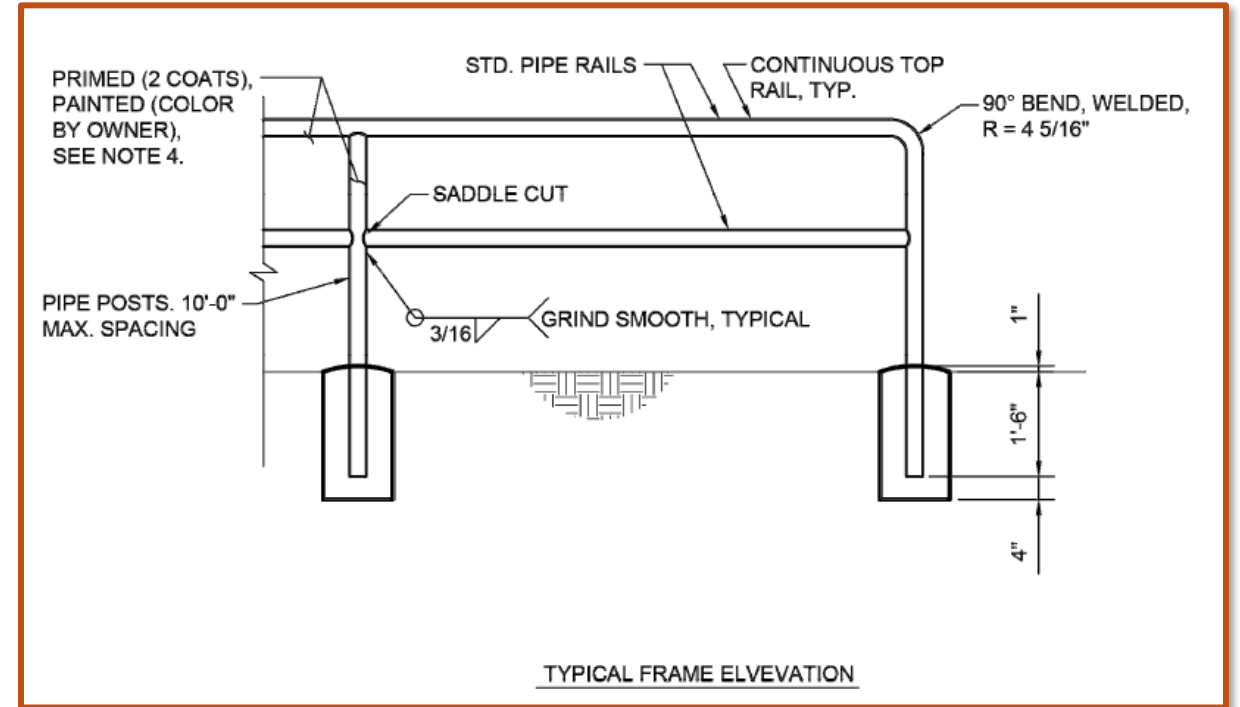
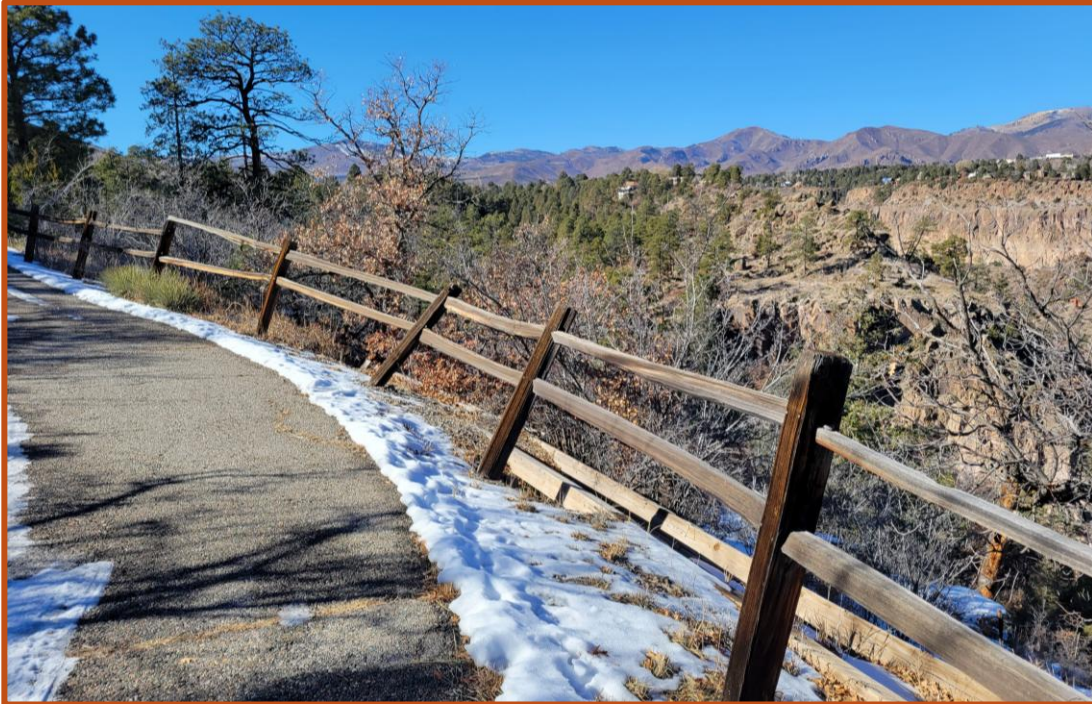
1'
Bench
(aka shoulder)



Switchback Realignment



New Guardrail



Existing Gym Equipment



- Existing gym equipment is staying *except* at bend, which will be relocated
- Relocation TBD, at County's discretion



Surfacing

- Project will use asphalt surfacing
- Key drivers of surfacing decision:
 - **Accessibility:** especially for those with mobility devices; adjacency to assisted living facility
 - **Snow Management:** Maintain ability to plow snow.
 - **Maintenance:** Longer-lasting than gravel/crusher (which experiences erosion and washout, requires regular weed management and regrading).
 - **Slope:** Grade changes make crusher-fine impractical.

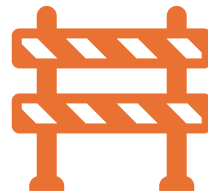


Implementation Timeline



Design Complete

Late Summer 2026



Construction

Winter/Spring 2026/2027



Trail Re-Opens

Spring/Summer 2027



Weather may delay construction. Goal is Winter construction and Spring completion.



Questions?



Thank You!

The Community Services staff thanks you for taking time out of your busy schedule to participate in the design and construction of this important public project!

Have more to say?

Email: LACMesaTrail@bhinc.com

Phone: 505-264-0111

Follow Project Updates Online:

<https://www.losalamosnm.us/County-Projects/Los-Alamos-Mesa-Trail-Rehabilitation-Design>

