



County of Los Alamos

BCC Meeting Minutes - Draft

Environmental Sustainability Board

1000 Central Avenue
Los Alamos, NM 87544

Shannon Blair, Chair; Sue Barns, Vice-Chair; Joseph Chandler; Jyl DeHaven; Hermann Geppert-Kleinrath, and Rebecca Paley-Williams, Members

Thursday, April 17, 2025

5:30 PM

1000 Central Avenue, Council Chambers

1. CALL TO ORDER - ROLL CALL

5:39 p.m. Members Chandler and Paley-Williams absent.

2. PUBLIC COMMENT

None.

3. APPROVAL OF AGENDA

Motion to approve the agenda as by Member DeHaven second by Member Barns the motion passed unanimously.

4. APPROVAL OF MINUTES

[20061-25](#) Approval of March 20, 2025, Environmental Sustainability Board Minutes

Presenters: Angelica Gurule

Motion to approve the minutes of March 20, 2025 as amended by Member Barns, second by Member DeHaven the motion passed unanimously.

5. BOARD BUSINESS

[20060-25](#) Introduction to Fleet Conversion Plan and Community-Wide EV Charging Plan

Presenters: Angelica Gurule

Sustainability Manager Angelica Gurule gave a presentation on the Fleet Conversion and Community-Wide Eve Charging Plan. The presentation was on the goals and the scope of the study and outlined how Stantec will plan for fleet electrification and community charging. Also, how they will gather input from ESB, Council and the community.

[20063-25](#) Review Plans for Earth Day 2025

Presenters: Angelica Gurule

Discussed and reviewed the plans for Earth Day 2025.

6. REPORTS

A. Chair's Report - Shannon Blair

Chair Blair announced that member Jesse Derringer resigned from the board, Chair Blair met with Airport Manager Gary Goddard he is trying to do some Net Zero work at the airport. She has asked him to give ESB a presentation next month, also will be scheduling a tour of the airport. She reminded everyone about the BPU natural gas working group and encouraged members to get involved.

- 1). Board of Public Utilities - Jesse Derringer/Shannon Blair
None.

- 2). Transportation Board - Hermann Geppert
None.

- 3). Parks and Recreation Board - Shannon Blair

None. Sustainability Manager Angelica Gurule did announce that Parks and Rec Board are conducting an artificial turf study.

- 4). Health Council - Jyl DeHaven

Member DeHaven announced that the Health Council will participate in Earth Day. Working group is looking into the list of needs and wants of a Social Services facilities, should have something to present to Council by the end of summer.

- 5). County Council Liaison - Ryn Herrmann

Councilor Herrmann reported that an amendment to an ordinance for distracted driving passed, also approved an ordinance to approve the purchase of speed cameras for safer driving. Reported on a non-partisan regulatory group called "Cities Work" where they look at communities at how people start business in a town and how easy and difficult it is. Also, Council passed a motion to continue working on the MRA plan.

- 6). Inclusivity Task Force - Xeph Ivankovich and KokHeong McNaughton

Inclusivity Task Force Member McNaughton reported that the Bee City is going to have a native plant sale on May 17th at the PEEC from 9:00 a.m. – 12:00 p.m. The Inclusivity Task Force will be meeting every 3 weeks, at the April 16th meeting they had a presentation from Craig Martin on accessibility in Los Alamos trails, what had been done and what needs to be done. The task force has created many working groups and are recruiting members.

B. Working Groups and Steering Committee Reports

None.

1). Los Alamos Sustainability Alliance - Sue Barns/Rebecca Paley-Williams

Vice-Chair Barns reported that the Los Alamos Sustainability Alliance met on Tuesday, April 8th, and went over Earth Day preparation. The sustainability newsletter could use input. Carol Clark from the Los Alamos Daily Post would like to restart the page on sustainability. In addition to Earth Day events, there will also be a Youth Eco Club Summit at the high school on April 25th.

2). Education and Outreach Working Group - Jyl DeHaven

Member DeHaven reported that she will be attending the summit at the high school, has reached out to the environmental educator at the high school and had a very nice conversation about what could be helpful to them. After the summit she volunteered to work with the Eco club to put together an end-of-year project.

3). Community-Wide EV Study Steering Committee - Sue Barns

Vice-Chair Barns reported that the Community-Wide EV Steering Committee met and went over details for the public meeting, hoping to get a good turnout.

4). Plastic Bag Research Working Group - Shannon Blair, Rebecca Paley-Williams, Hermann Geppert

Chair Blair reported that the plastic bag working group met and they are going to reach out to the Las Cruces Sustainability Manager and talk about how they got their plastic bag ordinance approved.

5). Bee City Los Alamos - Britton Donharl

None.

7. STAFF REPORT

[20062-25](#)

Sustainability Manager Updates

Presenters: Angelica Gurule

Sustainability Manager Angelica Gurule reported that the County Council approved the charge point amendment to purchase six level 2 EV charges to be placed at the Muni. Bldg. Finalized the scope of work for the education and outreach request for proposals, hoping to advertise next week. The scope of work for energy audits has started with Abbey Hayward. The DPU Water Festival is on May 20th and 21st and the board has been asked to participate. The Residential Sustainability Report is attached.

8. PREVIEW OF UPCOMING AGENDA ITEMS
-Gary Goddard, Airport Manager - Net
Zero Goal

9. ADJOURNMENT 5:40 p.m.

If you are an individual with a disability who is in need of a reader, amplifier, qualified sign language interpreter, or any other form of auxiliary aid or service to attend or participate in the hearing or meeting, please contact the County Human Resources Division at 662-8040 at least one week prior to the meeting or as soon as possible. Public documents, including the agenda and minutes can be provided in various accessible formats. Please contact the personnel in the Community Services Administration Office at 662-8163 if a summary or other type of accessible format is needed.

Shannon Blair, ESB Chair

Date

Los Alamos County Fleet Conversion Plan and Community-Wide EV Charging Plan

Project Kick-Off Meeting





Agenda

1. Project purpose
2. EV fleet conversion plan
3. EV charging plan
4. Engagement strategy
5. Deliverables and timeline

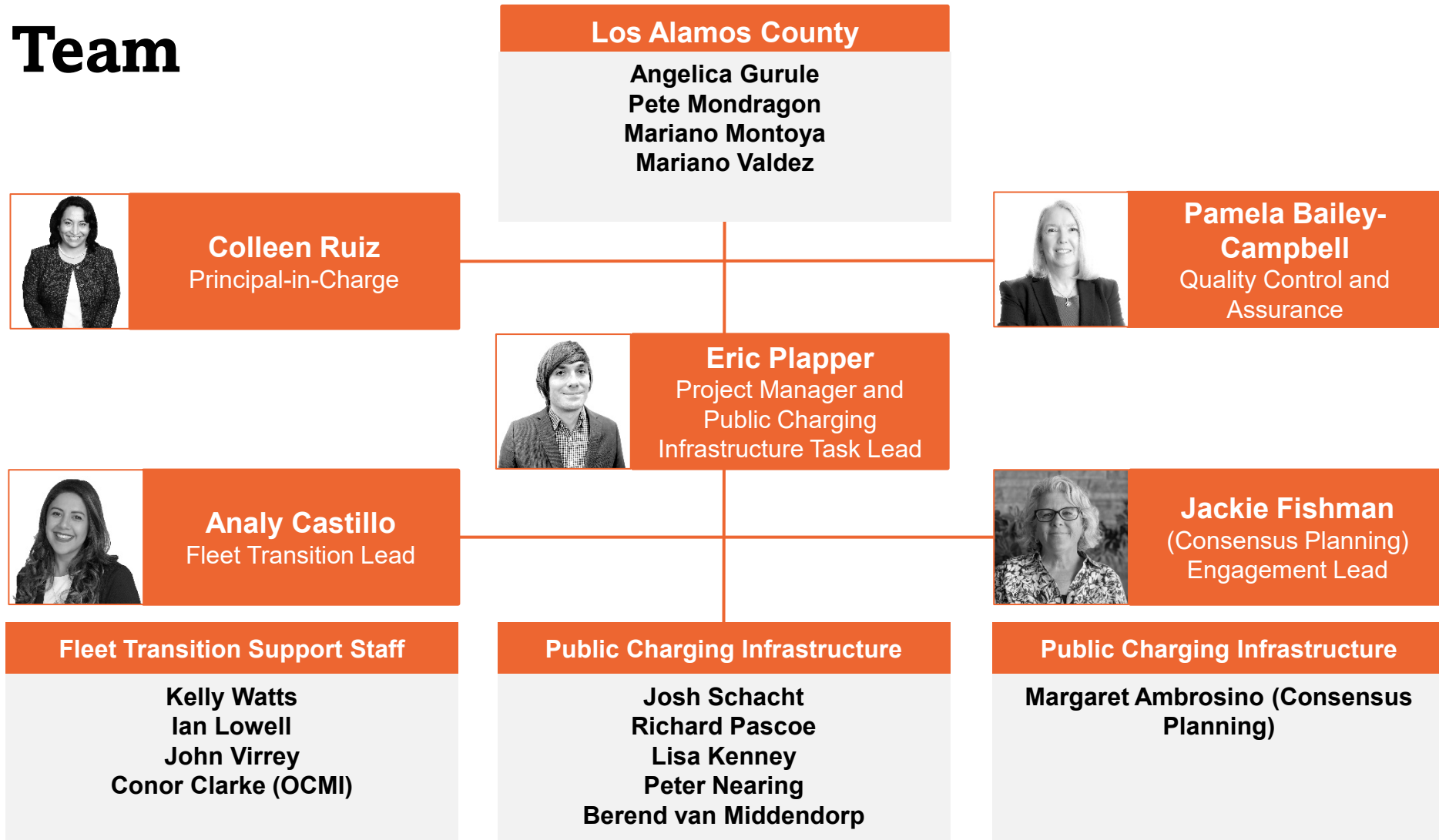


Project Purpose

1. Reduce greenhouse gas (GHG) emissions from the County fleet
2. Expand EV charging infrastructure
3. Engage County partners



Project Team





Fleet and Facilities Existing Conditions

Industry Review

- Vehicles
- Technologies
- Manufacturers
- Charging and fueling equipment

Site visits

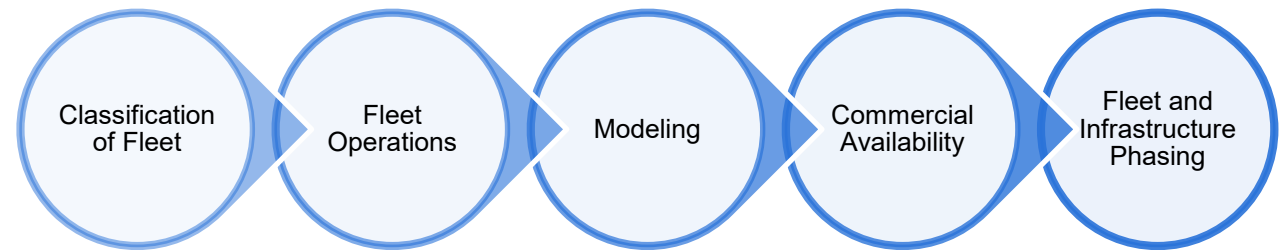
- Current fleet
- Vehicle and equipment replacement policies
- Facilities overview
- Site capacity
- Space constraints
- Charger locations
- Utility services





County Fleet Conversion Plan

- Vehicle performance and power modeling
 - Identify energy requirements and expected operational range
- Vehicle replacement schedule & rightsizing
- Facility assessment and infrastructure upgrades
- GHG emissions analysis
- Financial analysis
- **Task deliverable:** County Fleet Conversion Plan

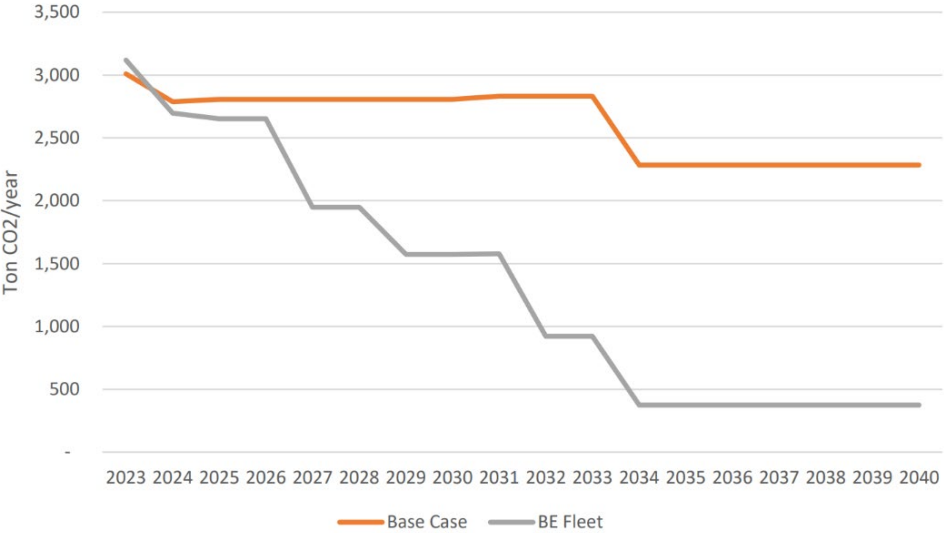




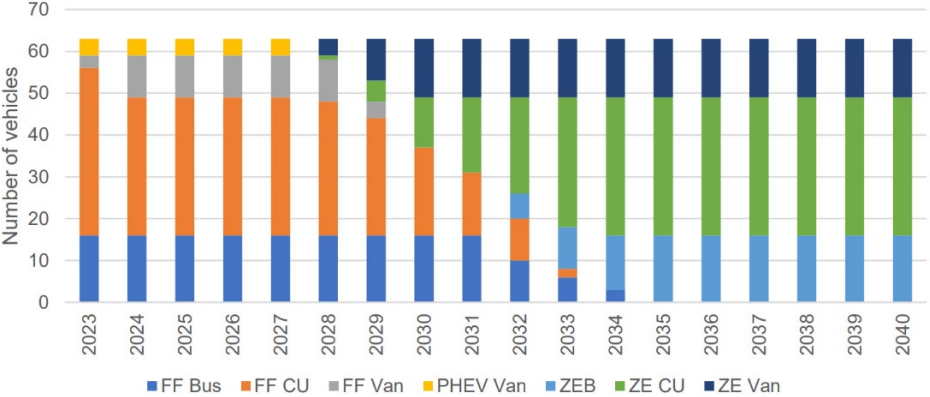
County Fleet Conversion Plan

Quantitative analysis of the fleet will inform the budget, timeline, and approach to EV conversion.

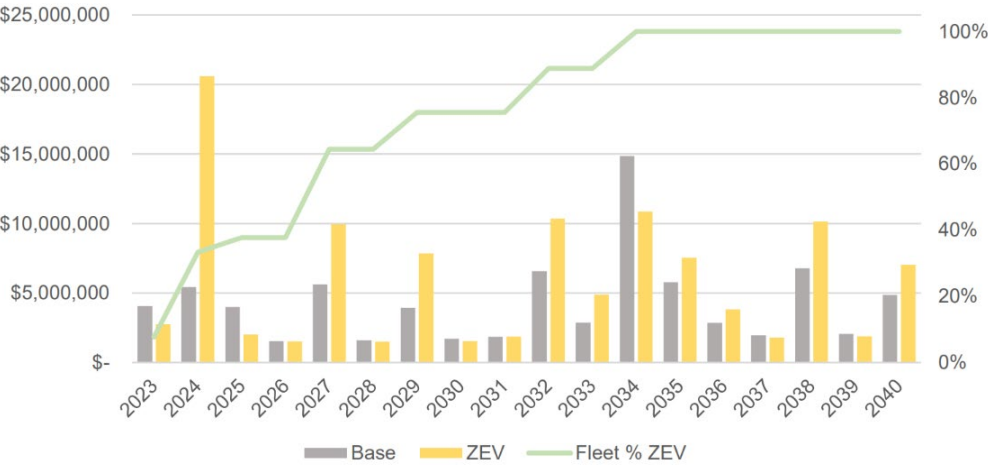
Example GHG Emissions Over Transition Timeline



Example Fleet Composition of Transition Timeline

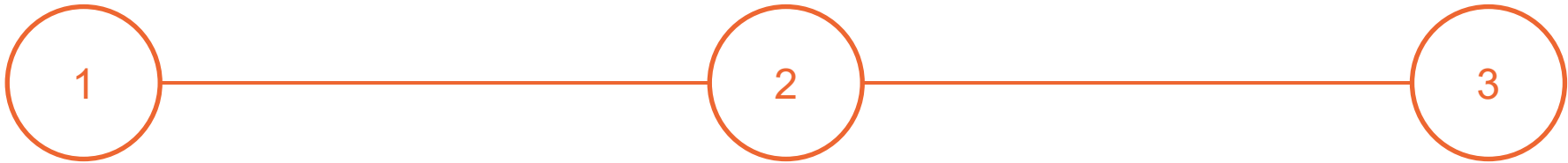


Financial Analysis Example





Community-Wide EV Charging Plan



Contextual Scan and Assessment:

- Relevant local plans
- Permitting, code, and zoning assessment

Deliverable: Contextual Scan and Assessment Technical Memo

Technical Analysis:

- Demand projection
- Suitability analysis
- Equity in the mapping process

Deliverable: Integrated Mapping Analysis Technical Memo

Implementation Plan:

- Business model assessment
- Public infrastructure costs and return on investment

Deliverables: Public Charging Infrastructure Readiness Plan



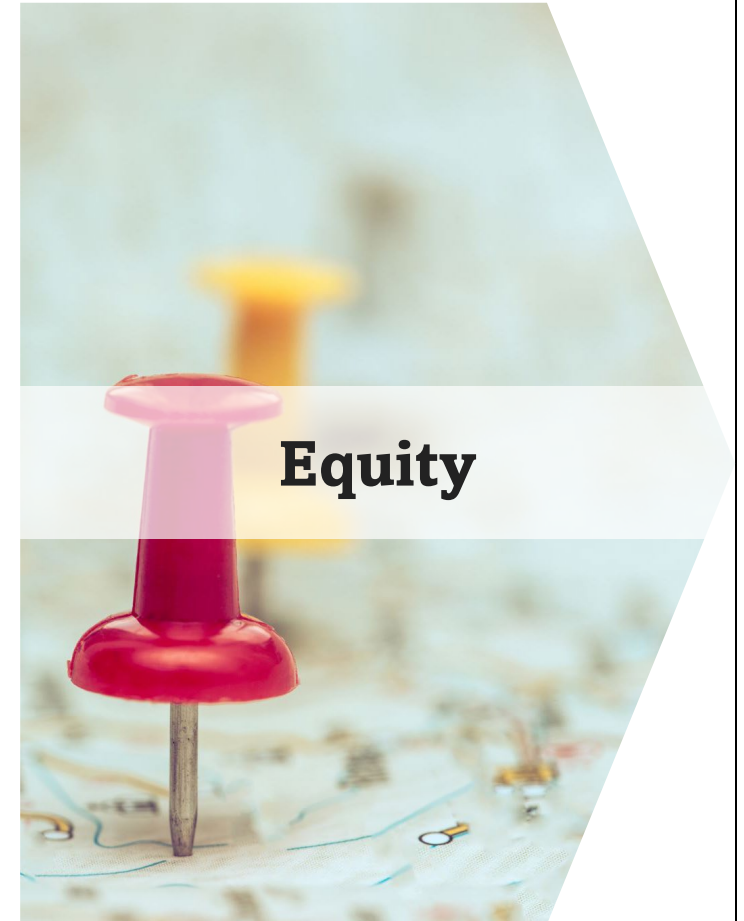
Relevant Local Plans

- Los Alamos County Climate Action Plan
- LAC Department of Public Utility Integrated Resource Plan
- New Mexico Clean Car Rule
- New Mexico Priority Climate Action Plan
- NMDOT New Mexico 2045 Plan
- New Mexico EV Infrastructure Deployment Plan
- Northern Pueblos Regional Transportation Plan
- LAC Code of Ordinances
- County Comprehensive Plan
- Procurement Policy





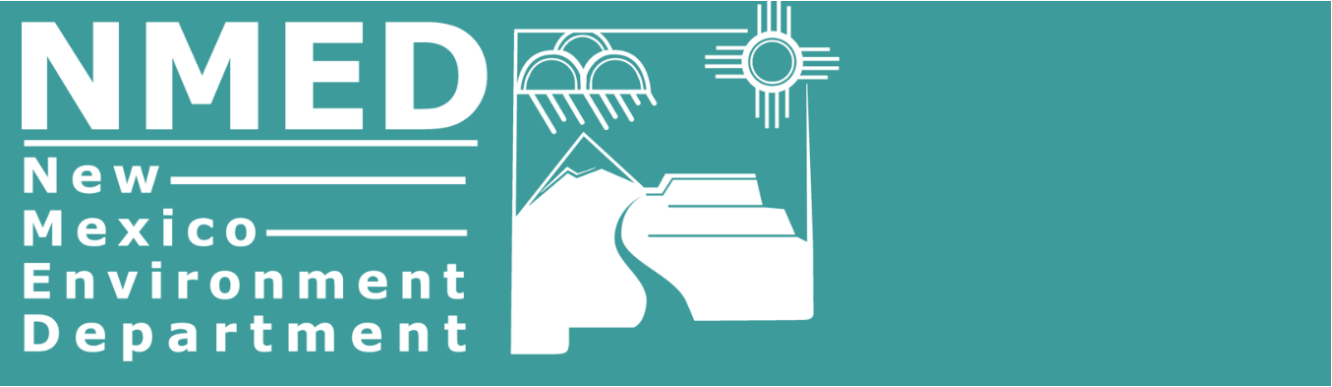
What are we looking for in an ideal charging network?



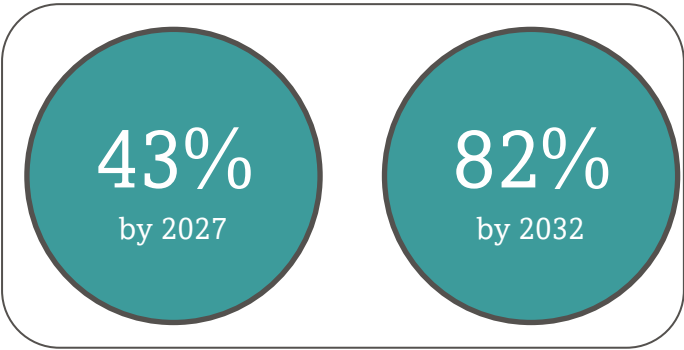


New Mexico Clean Car Rule

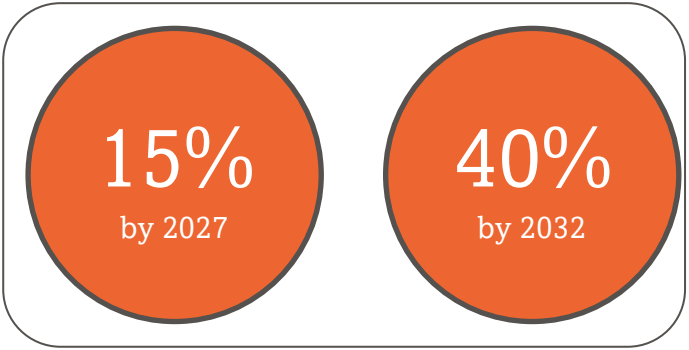
The New Mexico Clean Car Rule sets low-emission and zero-emission standards for new cars and trucks sold in the state, starting in 2026.



Light Duty Vehicles

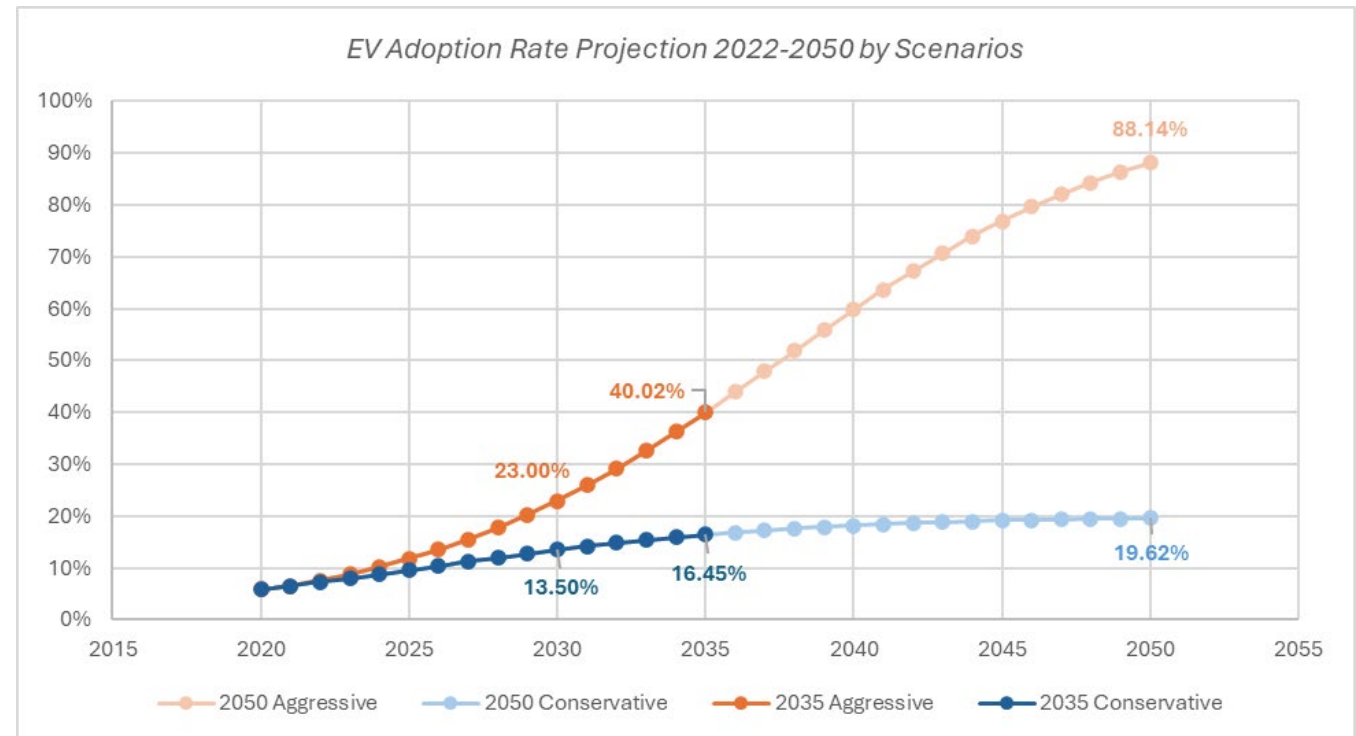


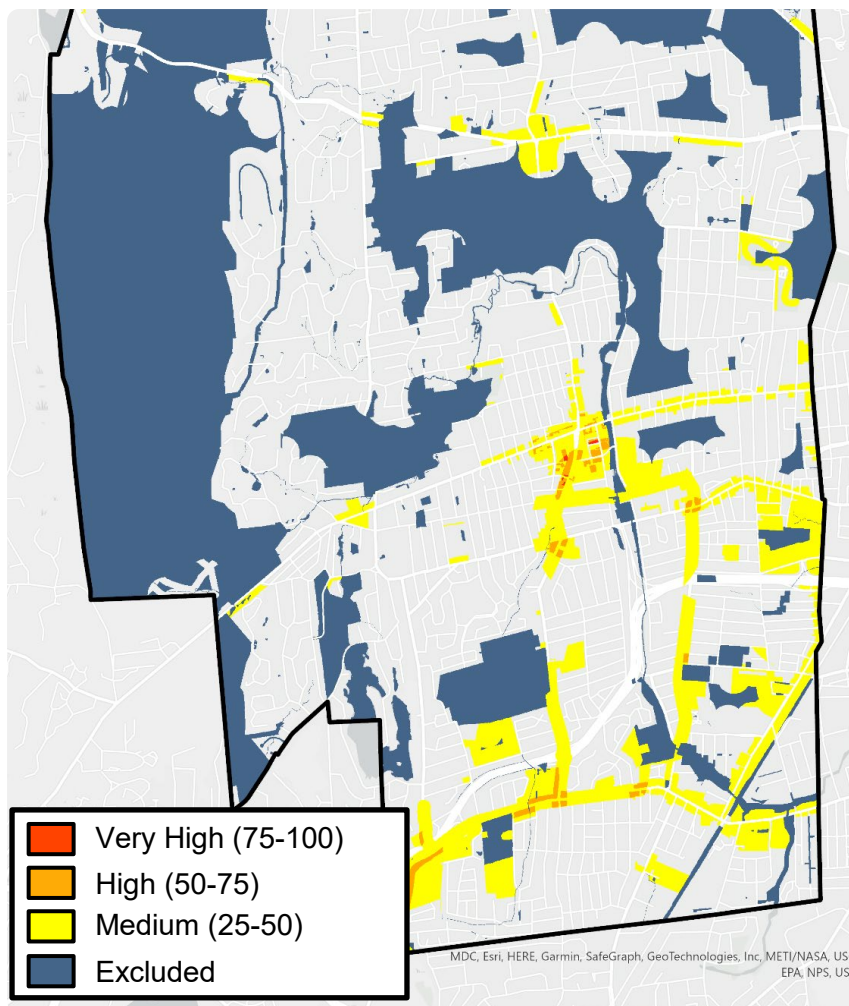
Trucks





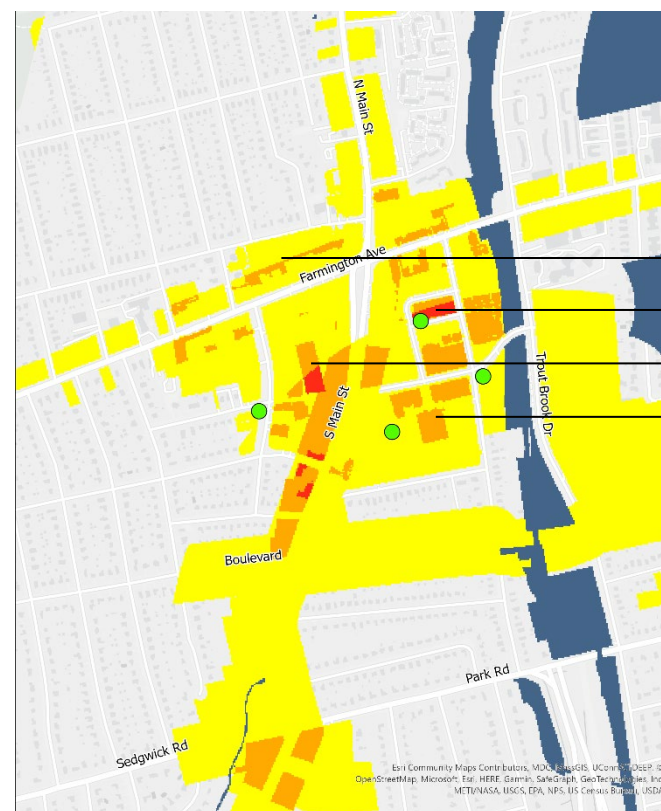
- Current registration
- Recent growth in registration
- Alignment with global and national trends
- Developing scenarios

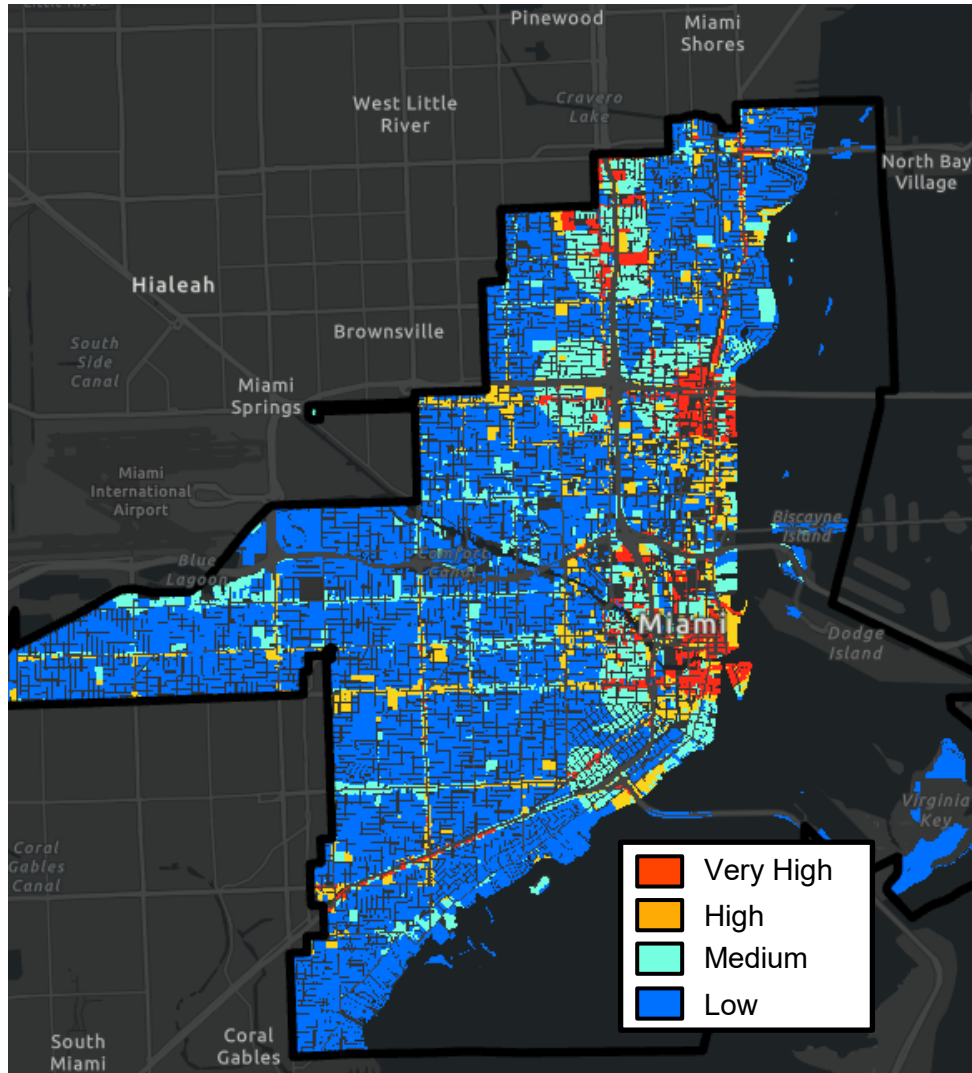




West Hartford, CT Public Charging Infrastructure Suitability Analysis

West Hartford, CT Site Selection





**Miami, FL Public Charging
Infrastructure Suitability Analysis**

Scenario Planning:

- Base case
- Underserved communities
- Corridor charging
- Commercial opportunities
- City-owned property



Public and Partner Engagement

Partner and Partner Engagement Plan:

- Partner registry
- Public engagement strategy
- Opportunities to leverage industry organizations

Partner Advisory Meetings:

- Virtual kick-off meeting with County Council
- Virtual presentation of draft fleet and public charging infrastructure plans to County Council, Environmental Sustainability Board, and Board of Public Utilities (one each)
- Virtual presentation of final deliverables to the entities above (one each)

Public Engagement:

- Leverage existing community-based organizations
- Administer statistically valid survey
- EV fact sheet
- One in-person community meeting
- One online community meeting
- Public and Partner Engagement Summary Technical Memorandum
- Opportunity to review and comment on final deliverables



Project Deliverables



Los Alamos EV Readiness Plan

Fleet Conversion Plan

Vehicle performance and power modeling

Vehicle replacement schedule

GHG emissions analysis

Facility assessment and infrastructure upgrades

Financial analysis

County fleet conversion plan

EV Charging Plan

Local plan review

Permitting, code, and zoning assessment

Demand projection

Suitability analysis

Equity in the mapping process

Integrated mapping analysis technical memo

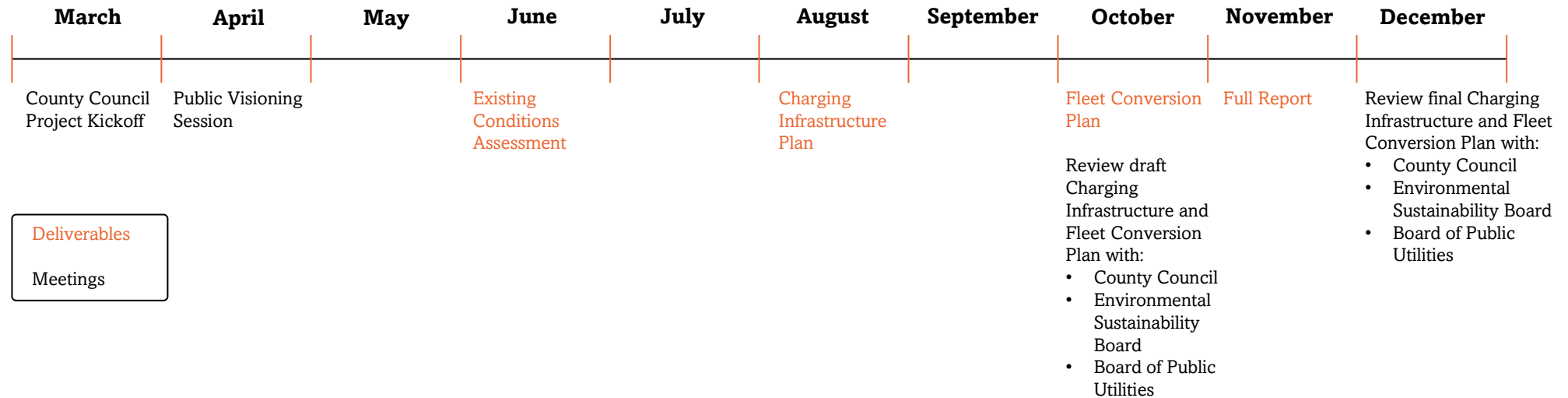
Business model assessment

Public infrastructure costs & ROI assessment

Public charging infrastructure final plan



Project Timeline





Next Steps



Community visioning session with the public



Fleet and facilities existing conditions assessment



Review of relevant plans and policies



Community-wide demand, suitability, and equity analysis

Questions
