

# PARKS AND RECREATION PROJECT UPDATES

Wendy Parker,  
Parks Superintendent

April 9, 2026

- PLAY EQUIPMENT LEGEND**
- 1 SWAYING EQUIPMENT
  - 2 SWAYING SET WITH ACCESSIBLE MAT & TOWER OR SWING
  - 3 SWING
  - 4 SWING SET STRUCTURE
  - 5 SWING PLANE
  - 6 SWING PLANE STRUCTURE
  - 7 SLIDING BRIDGE
  - 8 TOWER, TOWER
  - 9 TOWER BRIDGE/PROPOSITION
  - 10 TREE PLANK BRIDGE
  - 11 BALANCE LOG
  - 12 WALKING TRAIL
  - 13 FORMED LOG BALANCE BEAM
  - 14 ACCESSIBLE TOWER AREA
- MATERIALS LEGEND**
- WOOD FIBER PLAY SURFACE
  - RUBBER MULCH SURFACE
  - CONCRETE CURB AND RAIL
  - WALKWAY
  - GRAVEL SURFACE/OUTDOORING
  - DIRT GRASS

37th Street Playlot Concept 2



# PROJECTS OVERVIEW

The Community Services Department has a simple mission with a big impact: to care for and continually improve the parks, trails, and open spaces that shape daily life in Los Alamos. Whether you're heading out for a hike, taking the kids to a playground, or enjoying a quiet moment under the trees, or headed out to the summer concerts, our work is guided by two key community-built documents: the 2023 Integrated Master Plan and the 2025 Trails and Open Space Management Plan.

Our Integrated Master Plan reflects a clear message from the community: parks and trails must be welcoming to people of all ages, abilities, and backgrounds. Inclusion, access, and belonging are core design principles for our team, evident in our recent projects.

Both plans were shaped with extensive public input, and together they create a shared roadmap that values stewardship, access, and the natural beauty that defines Los Alamos.

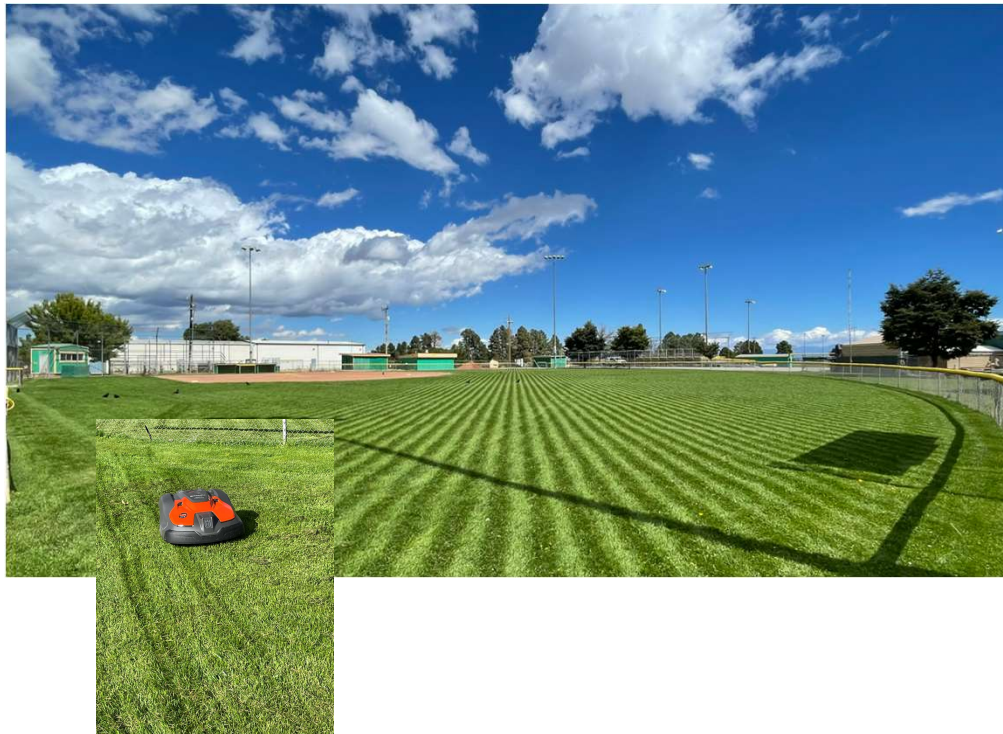
# COMPLETED PROJECTS

## Mesa Library



- Golf Course Improvements
- North Mesa Pickleball Courts
- East Park Basketball Court
- North Mesa Master Plan
- Renovation of Athletic Fields (Bomber, Hope & Dara Jones / 2024)
- Mesa Library Courtyard Renovation
- Trails and Open Space Management Plan 2025
- Parking Lot at the Ice Rink
- Robotic Mowers for golf and sports fields

# COMPLETED PROJECTS PHOTOS



# COMPLETED PROJECTS PHOTOS



# COMPLETED PROJECTS PHOTOS

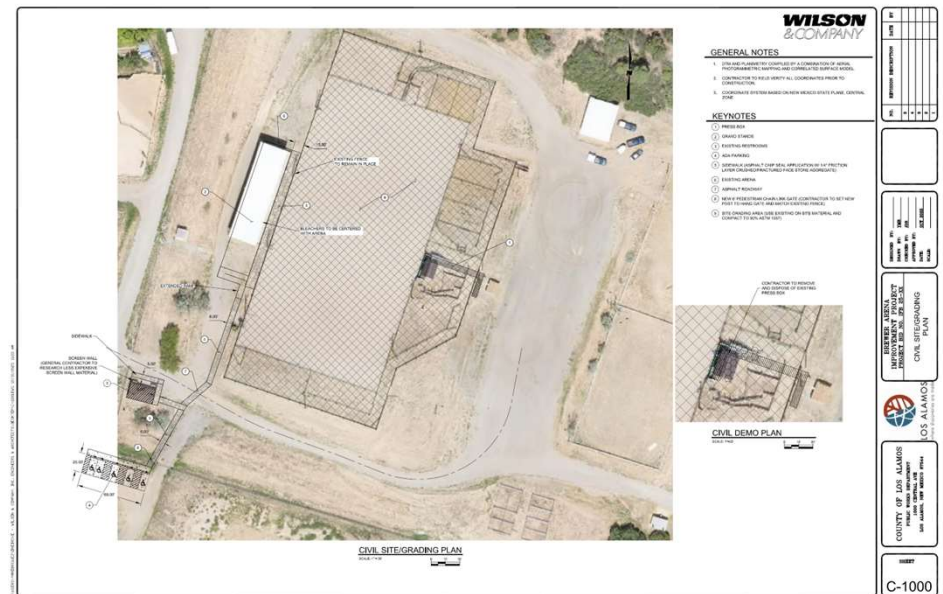


# 37<sup>th</sup> / Pinon PLAYGROUND PROJECT PHOTOS



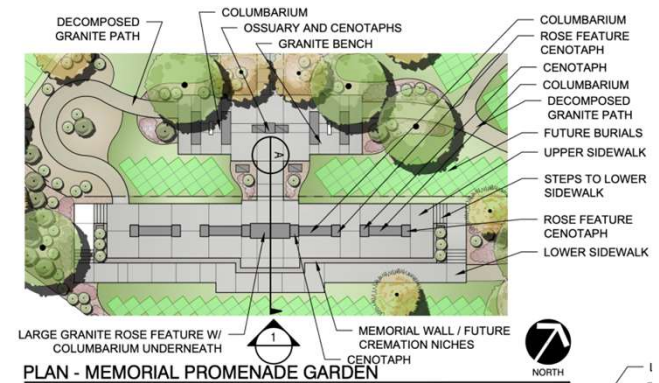
# PROJECTS IN DESIGN OR CONSTRUCTION PHASE

- Brewer Arena
- Grand Canyon Playground, San Ildefonso (Dinosaur Park)
- Athletic Courts Phase 2 / Urban Park Courts
- North Mesa Picnic Grounds
- North Mesa Recreation Area
- 3-Year Renovation of Athletic Fields
- Bayo Canyon Trailhead Construction
- Rose Garden Fence
- LA Mesa Trail Rehabilitation
- Ashley Pond Repairs
- Aquatic Center Pool Resurfacing



# FUTURE PROJECTS

- Guaje Pines Cemetery – Phase 1
- North Mesa Recreation Design/Construction (Phase 1 and beyond, as funding allows)
- Renovation Athletic Fields – Year 2 and 3
- Robotic Mowers / White Rock
- Quemazon Trailhead
- Demonstration Garden
- Ashley Pond Shore Power Phase II
- Upgrade signage throughout the network HK1
- Ice Rink Slab and Shade Structure



# PROJECT SUMMARY

Between park construction, Wildfire mitigation, general maintenance, erosion control, and habitat protection, our parks system and open spaces are kept safe and resilient. A recent highlight is the improved Kinnikinnik Park trail, which now offers better access for people with disabilities.

The Integrated Master Plan and 2025 Trails and Open Space Management Plan provide consistency, clarity, and a healthier landscape for today and into the future.

The theme in all department plans is to preserve and enhance the natural character of our community. This goal aligns with the County Council's 2026 Strategic Objectives around Operational Excellence and Quality of Life.

**Together, we're working to protect what makes Los Alamos unique while continuing to improve it for future generations!**

# Questions?

