

# Los Alamos County Fleet Conversion Plan and Community-Wide EV Charging Plan

Project Kick-Off Meeting

---





# Agenda

1. Project purpose
2. EV fleet conversion plan
3. EV charging plan
4. Engagement strategy
5. Deliverables and timeline

ATTACHMENT A

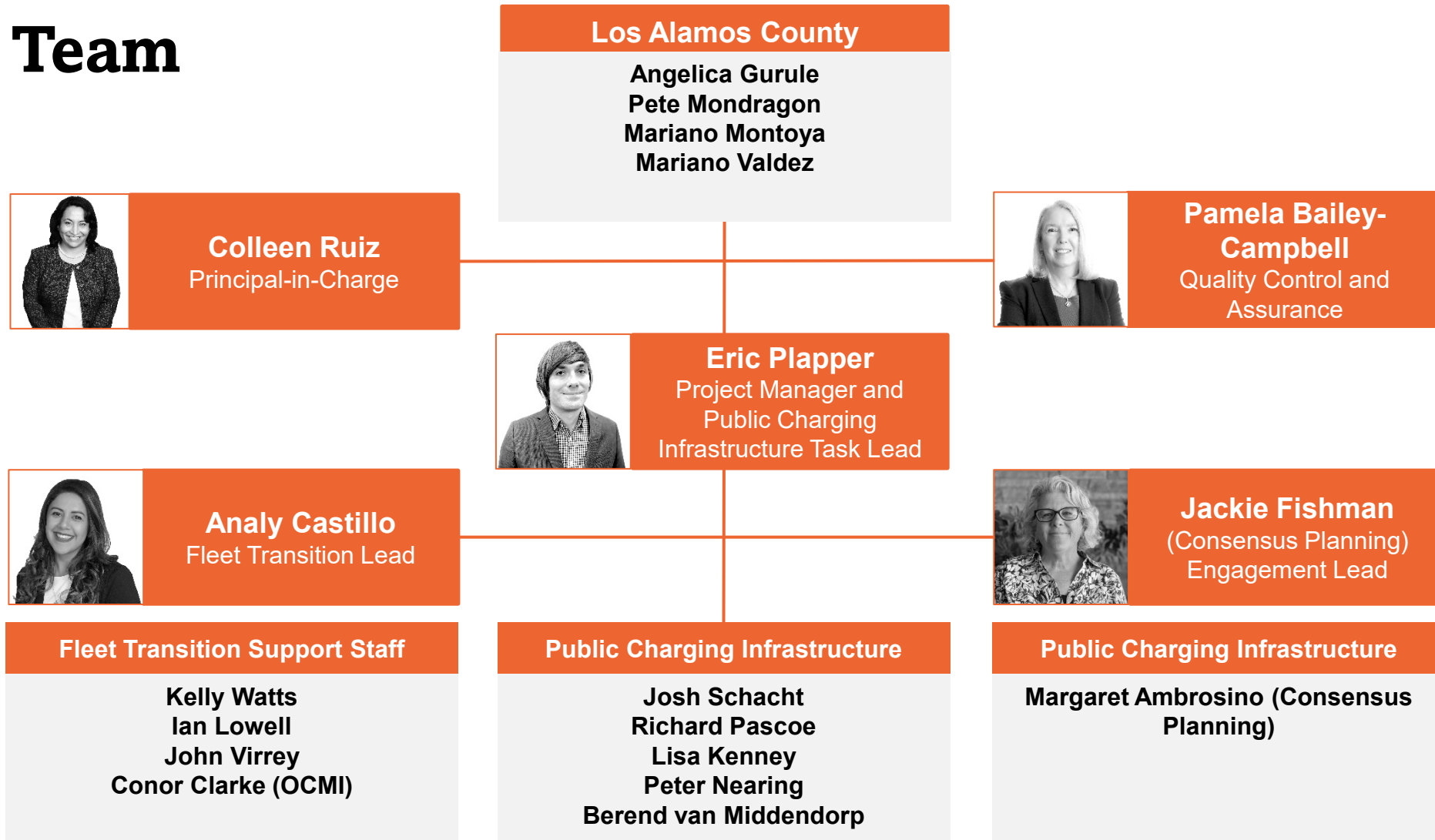


# Project Purpose

1. Reduce greenhouse gas (GHG) emissions from the County fleet
2. Expand EV charging infrastructure
3. Engage County partners



# Project Team





# Fleet and Facilities Existing Conditions

## Industry Review

- Vehicles
- Technologies
- Manufacturers
- Charging and fueling equipment

## Site visits

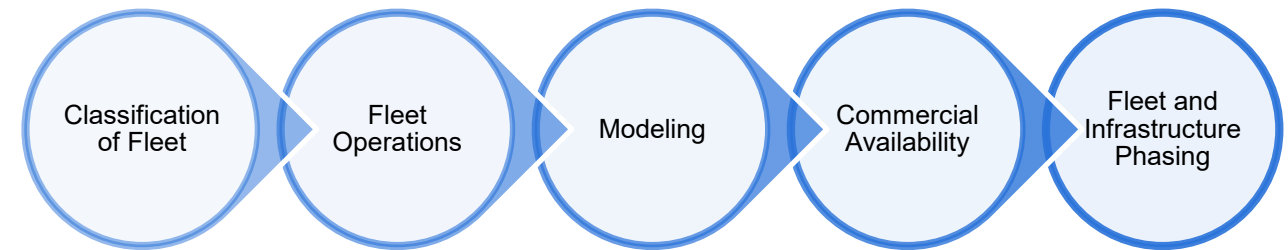
- Current fleet
- Vehicle and equipment replacement policies
- Facilities overview
- Site capacity
- Space constraints
- Charger locations
- Utility services





# County Fleet Conversion Plan

- Vehicle performance and power modeling
  - Identify energy requirements and expected operational range
- Vehicle replacement schedule & rightsizing
- Facility assessment and infrastructure upgrades
- GHG emissions analysis
- Financial analysis
- **Task deliverable:** County Fleet Conversion Plan

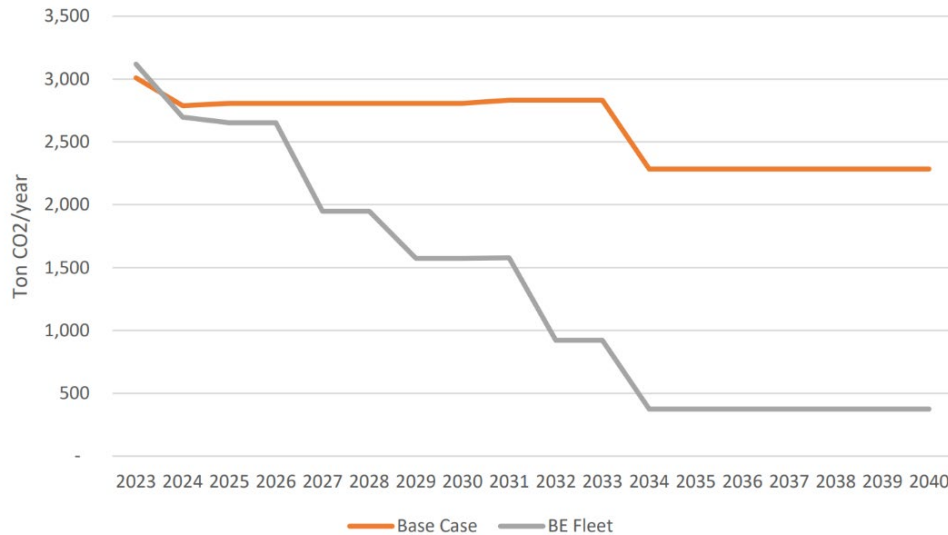




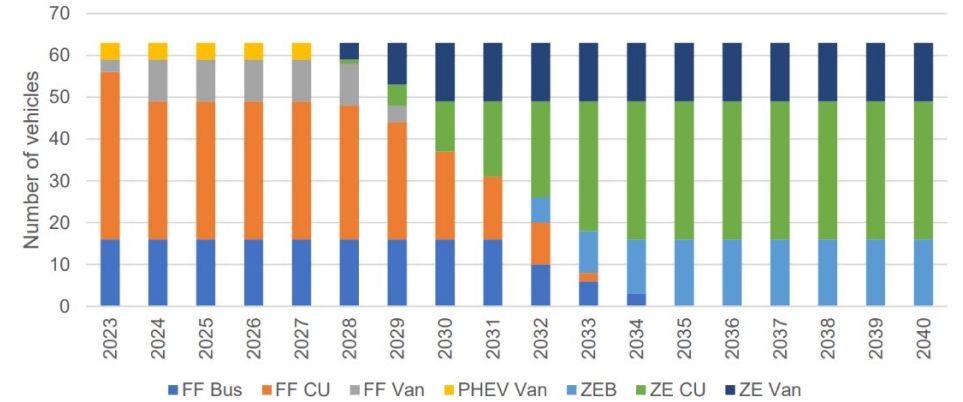
# County Fleet Conversion Plan

Quantitative analysis of the fleet will inform the budget, timeline, and approach to EV conversion.

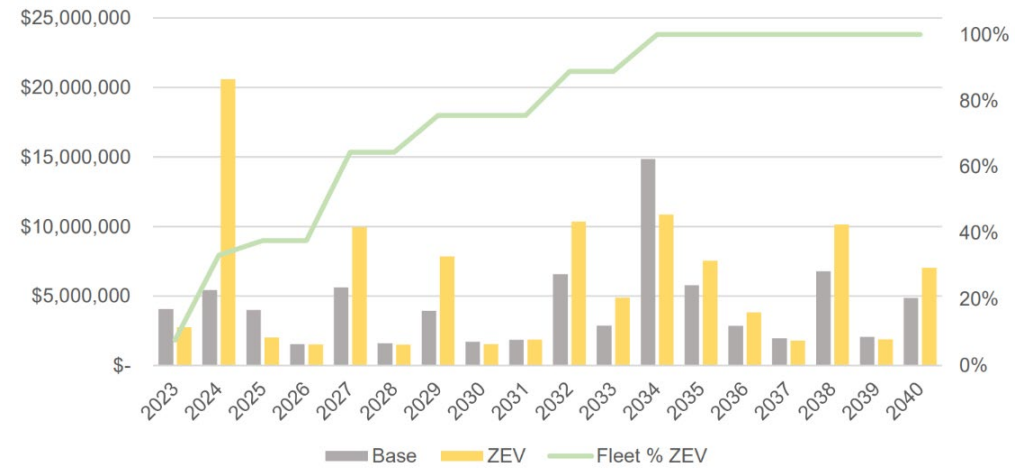
### Example GHG Emissions Over Transition Timeline



### Example Fleet Composition of Transition Timeline

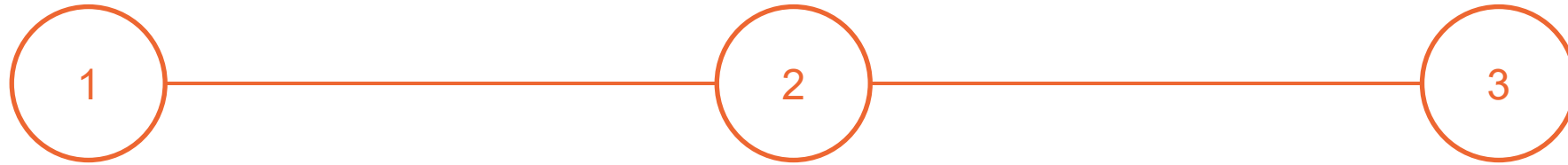


### Financial Analysis Example





# Community-Wide EV Charging Plan



## **Contextual Scan and Assessment:**

- Relevant local plans
- Permitting, code, and zoning assessment

**Deliverable:** Contextual Scan and Assessment Technical Memo

## **Technical Analysis:**

- Demand projection
- Suitability analysis
- Equity in the mapping process

**Deliverable:** Integrated Mapping Analysis Technical Memo

## **Implementation Plan:**

- Business model assessment
- Public infrastructure costs and return on investment

**Deliverables:** Public Charging Infrastructure Readiness Plan





# Relevant Local Plans

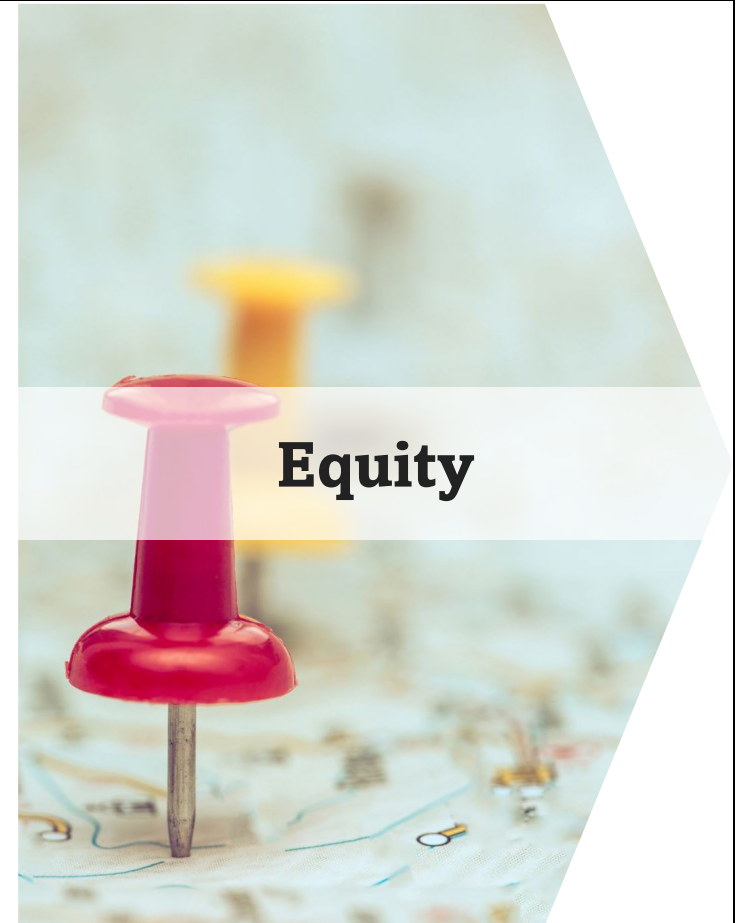
- Los Alamos County Climate Action Plan
- LAC Department of Public Utility Integrated Resource Plan
- New Mexico Clean Car Rule
- New Mexico Priority Climate Action Plan
- NMDOT New Mexico 2045 Plan
- New Mexico EV Infrastructure Deployment Plan
- Northern Pueblos Regional Transportation Plan
- LAC Code of Ordinances
- County Comprehensive Plan
- Procurement Policy



ATTACHMENT A



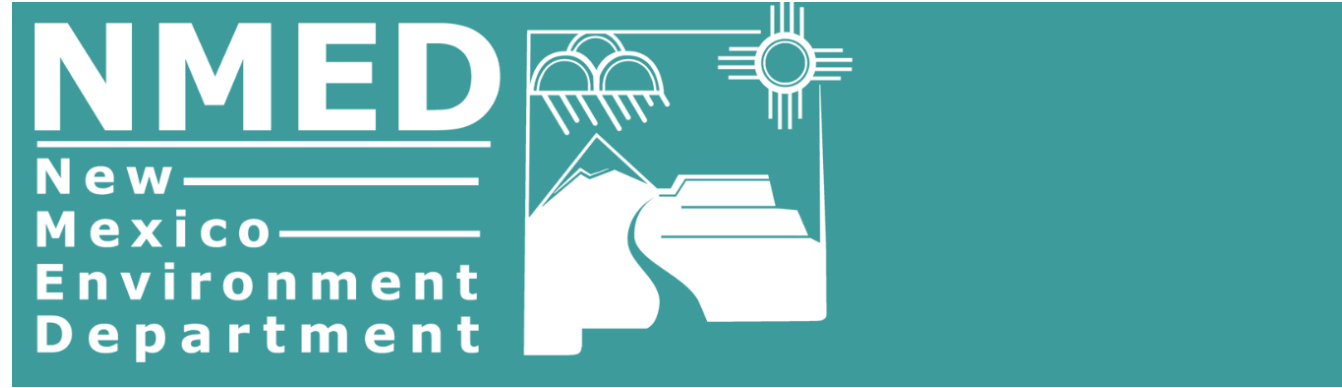
# What are we looking for in an ideal charging network?



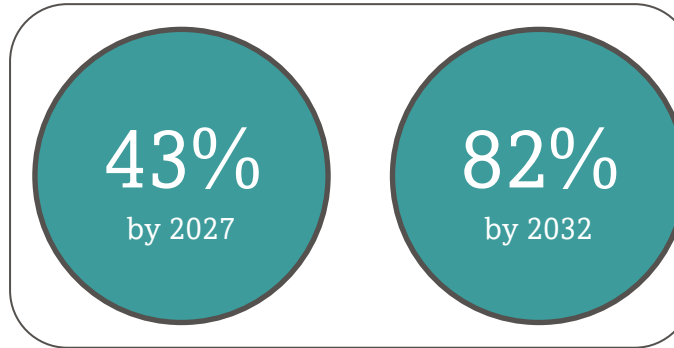


# New Mexico Clean Car Rule

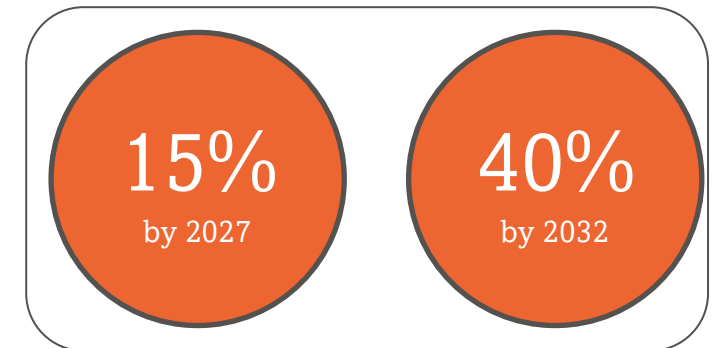
The New Mexico Clean Car Rule sets low-emission and zero-emission standards for new cars and trucks sold in the state, starting in 2026.



## Light Duty Vehicles



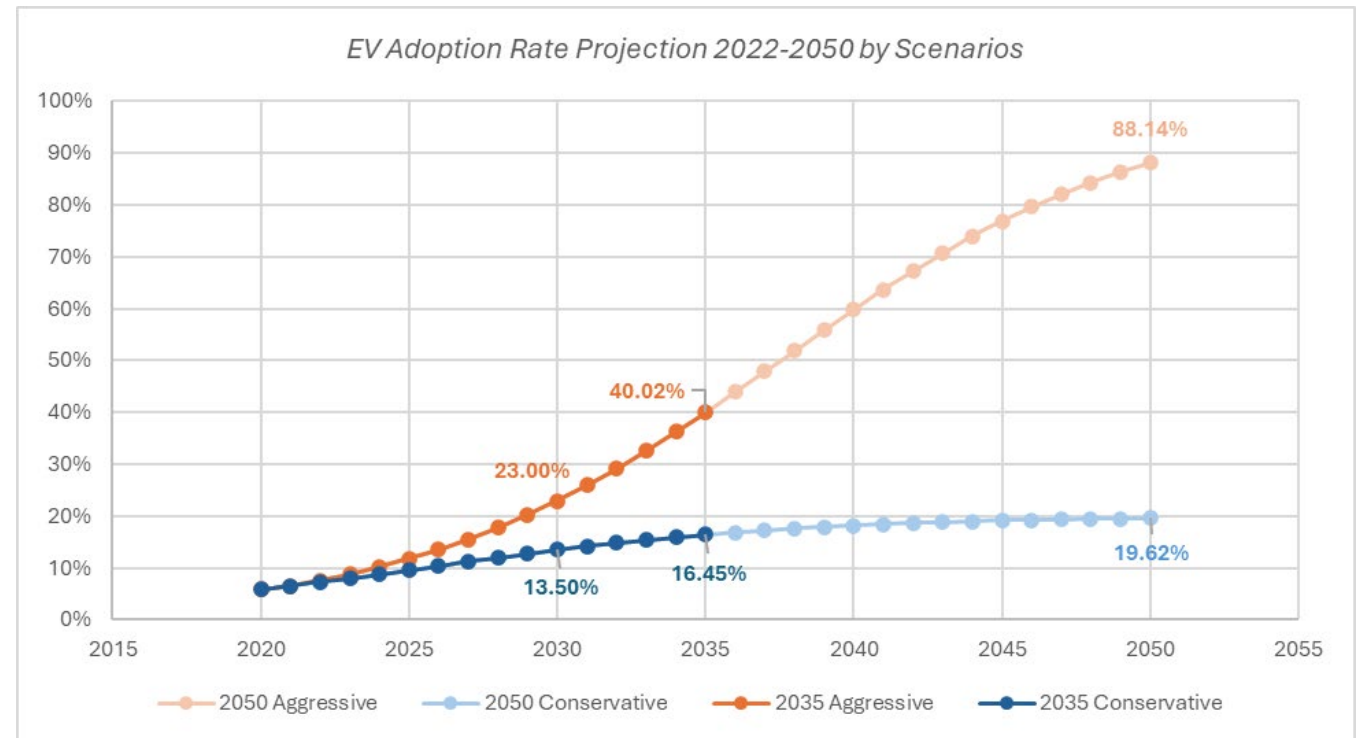
## Trucks

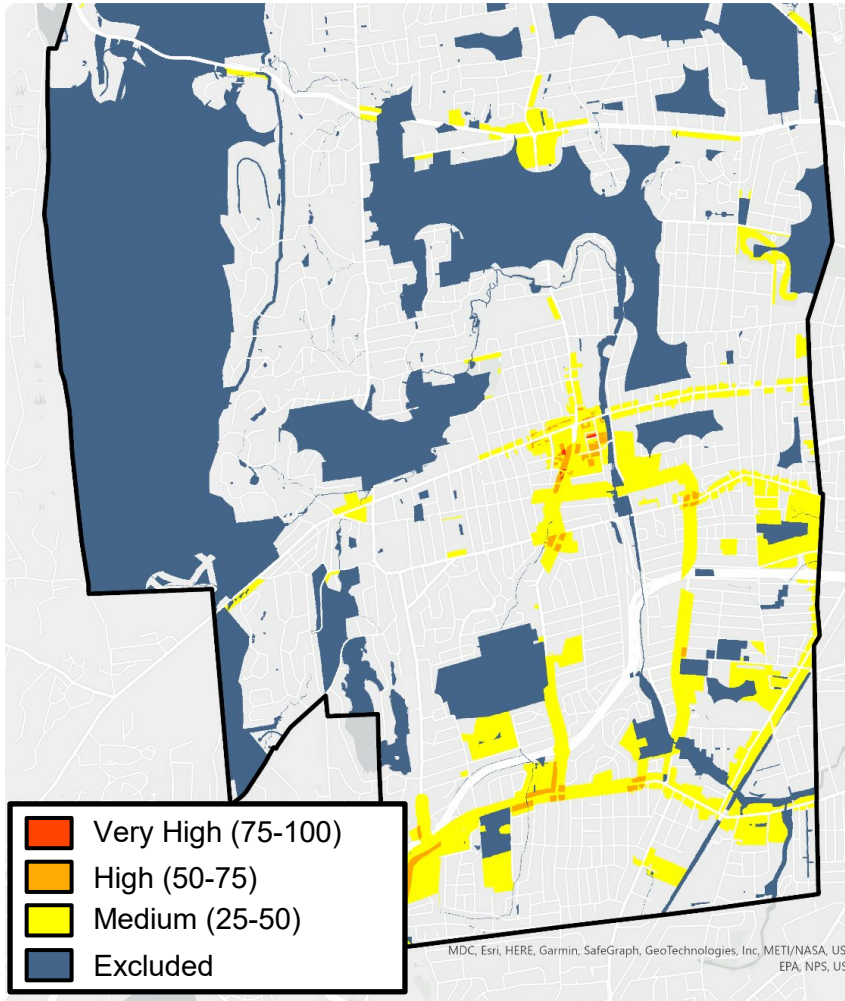




# Estimating Local Adoption and Charger Needs

- Current registration
- Recent growth in registration
- Alignment with global and national trends
- Developing scenarios

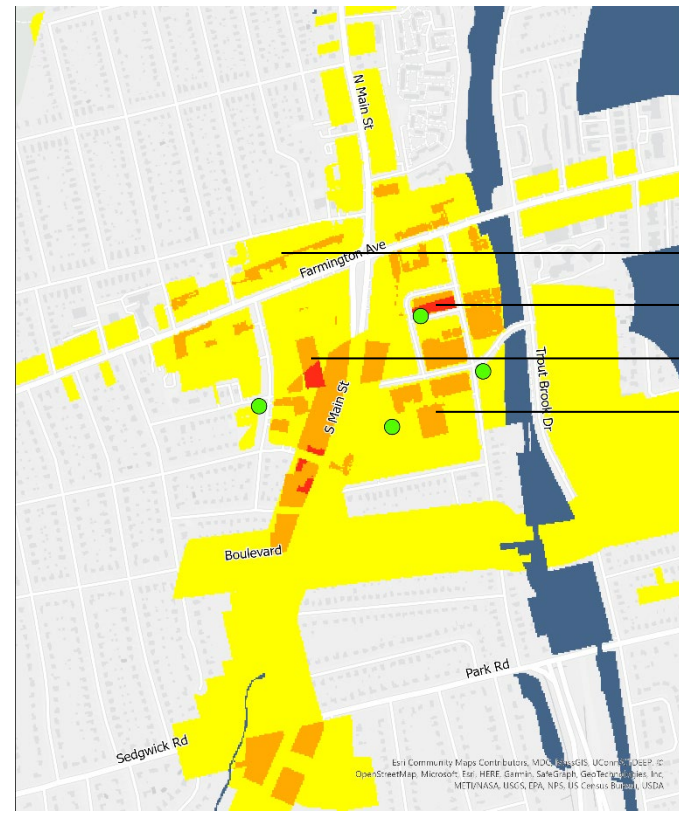




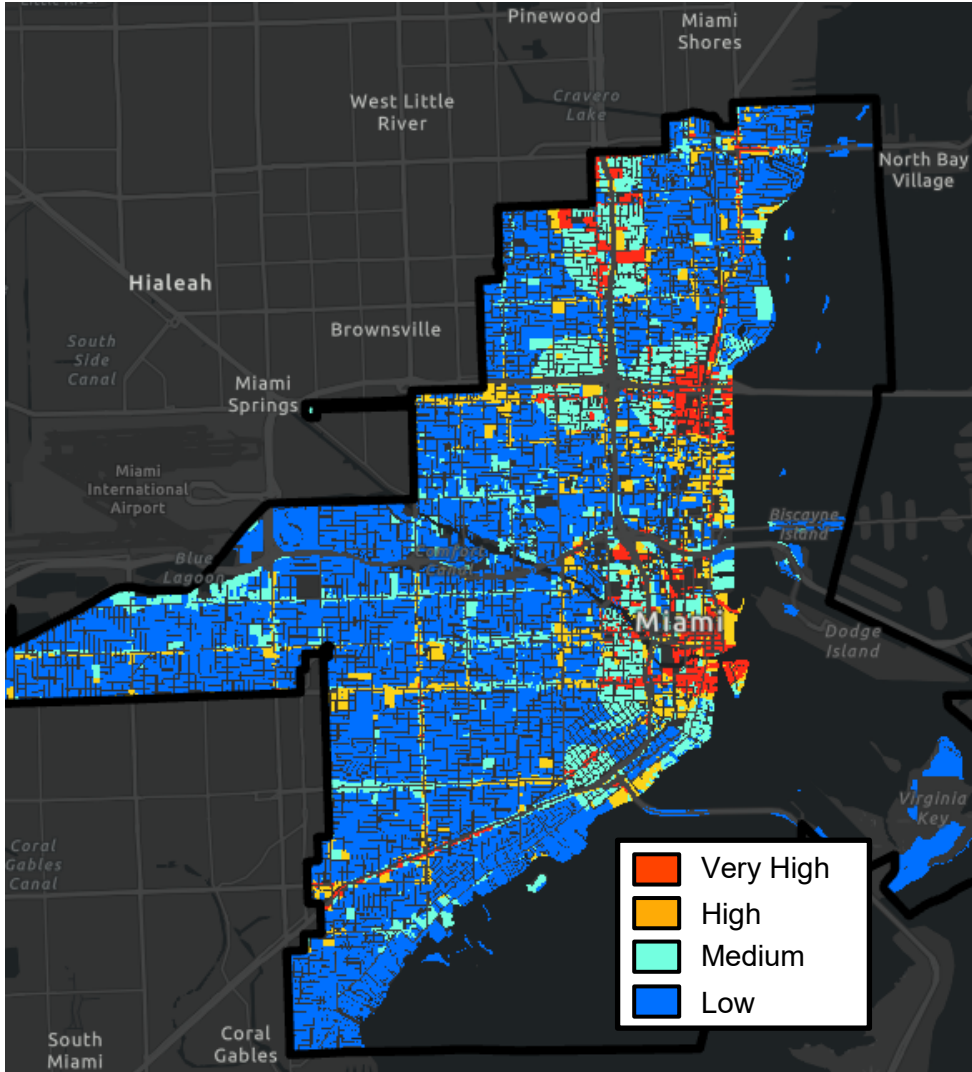
**West Hartford, CT Public Charging Infrastructure Suitability Analysis**

# Example Outputs

## West Hartford, CT Site Selection



- Brace Road Lot
- Isham Garage
- Town Center Garage
- Memorial Garage



**Miami, FL Public Charging Infrastructure Suitability Analysis**

# Outputs: Miami

## Scenario Planning:

- Base case
- Underserved communities
- Corridor charging
- Commercial opportunities
- City-owned property



# Public and Partner Engagement

## Partner and Partner Engagement Plan:

- Partner registry
- Public engagement strategy
- Opportunities to leverage industry organizations

## Partner Advisory Meetings:

- Virtual kick-off meeting with County Council
- Virtual presentation of draft fleet and public charging infrastructure plans to County Council, Environmental Sustainability Board, and Board of Public Utilities (one each)
- Virtual presentation of final deliverables to the entities above (one each)

## Public Engagement:

- Leverage existing community-based organizations
- Administer statistically valid survey
- EV fact sheet
- One in-person community meeting
- One online community meeting
- Public and Partner Engagement Summary Technical Memorandum
- Opportunity to review and comment on final deliverables



# Project Deliverables



## Los Alamos EV Readiness Plan

### Fleet Conversion Plan

Vehicle performance and power modeling

Vehicle replacement schedule

GHG emissions analysis

Facility assessment and infrastructure upgrades

Financial analysis

County fleet conversion plan

### EV Charging Plan

Local plan review

Permitting, code, and zoning assessment

Demand projection

Suitability analysis

Equity in the mapping process

Integrated mapping analysis technical memo

Business model assessment

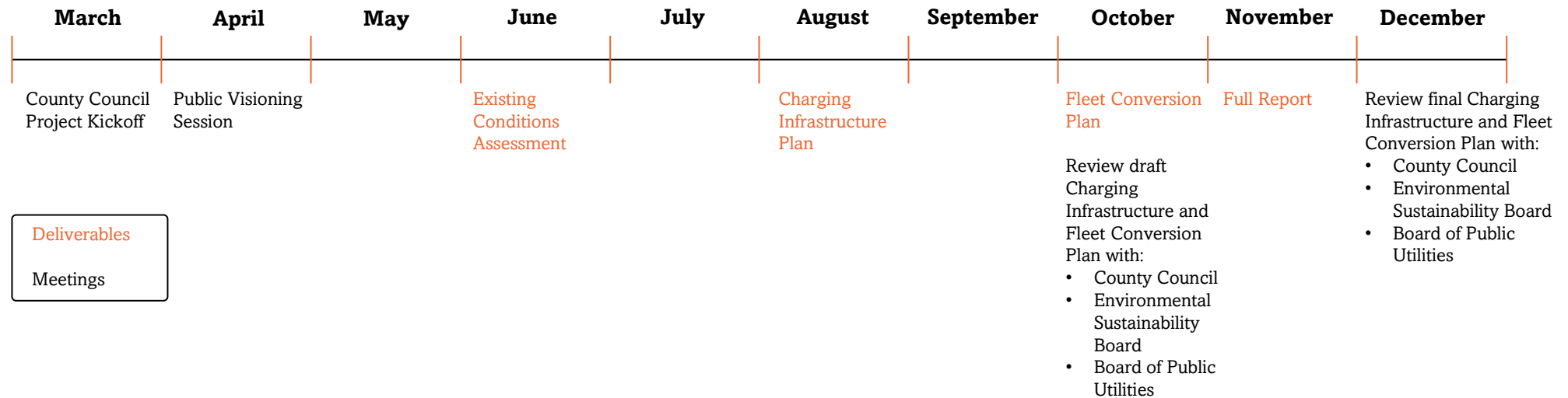
Public infrastructure costs & ROI assessment

Public charging infrastructure final plan





# Project Timeline





# Next Steps



**Community visioning session with the public**



**Fleet and facilities existing conditions assessment**



**Review of relevant plans and policies**



**Community-wide demand, suitability, and equity analysis**

# Questions

---