

**AMENDMENT NO. 2
INCORPORATED COUNTY OF LOS ALAMOS
SERVICES AGREEMENT NO. AGR20-42**

This **AMENDMENT NO. 2** ("Amendment") is entered into by and between the **Incorporated County of Los Alamos**, an incorporated county of the State of New Mexico ("County"), and **Los Alamos Retired and Senior Organization**, a New Mexico non-profit organization ("LARSO" or "Contractor"), collectively (the "Parties") to be effective for all purposes June 25, 2025.

WHEREAS, County and Contractor entered into Agreement No. AGR20-42, dated July 1, 2020, and Amendment No. 1 AGR20-42-A1, dated July 1, 2024 (as amended, the "Agreement") for staffing and operating Senior Centers and Adult Day Care; and

WHEREAS, the Services are ongoing, and both Parties wish to amend the Agreement to include transportation services for medical appointments for Seniors outside of Los Alamos County and to modify the programming hours and Premises from which the Contractor will provide the Services; and

WHEREAS, County Council approved this Amendment at a public meeting held on July 8, 2025; and

NOW, THEREFORE, for good and valuable consideration, County and Contractor agree as follows:

- 1) Delete **SECTION A(1)(b) Transportation Services** in its entirety and replace it with the following:
 - b) **Transportation services.** Contractor shall manage a transportation program that includes, at a minimum, the following Services:
 - (1) Within Los Alamos County: Contractor shall work collaboratively with Atomic City Transit to reduce duplication of Senior transportation services and provide the following transportation services: Monday through Friday 8:00 a.m. to 6:00 p.m.; for the following:
 - (a) For Seniors - medical appointments, shopping trips, Senior Center activities, personal needs of the Seniors, community events and activities.
 - (b) For Los Alamos County residents who are unable to drive for physical reasons or due to mental handicap - on a space-available basis.
 - (2) Medical Appointments Outside Los Alamos County limits to include Espanola, Santa Fe and Albuquerque areas: Contractor shall provide on-demand transportation services for Seniors to medical appointments during the following times: Monday, through Friday 8:00 a.m. to 6:00 p.m.
 - (3) Leisure or Educational Trips Outside Los Alamos County limits to include Espanola, Santa Fe and Albuquerque areas; Contractor shall, from time to time, provide transportation services for Seniors for leisure or educational trips.

2) Delete SECTION A(3)(a)(1) **Premises** in its entirety and replace it with the following:

(2) The Primary Facility, located at 1101 Bathtub Row, Los Alamos, New Mexico 87544. See "Exhibit B" (2 Pages), attached hereto and made a part hereof for all purposes. The Primary Facility is available for Senior programming, at a minimum, from the hours of 7:30 a.m. to 4:30 p.m. Monday through Friday, excluding County holidays and Columbus Day. Note: The Los Alamos Senior Programs has regularly scheduled approximately 50% of weekday evenings and weekend hours, as reflected on the "Exhibits B-2 and C-2" attached hereto and made a part hereof for all purposes. County and Contractor may negotiate changes in hours or time on an as-needed basis.

3) Delete SECTION A(3)(a)(2) **Premises** in its entirety and replace it with the following:

(2) The White Rock Senior Center and the Meal Center located at 137 and 139 Longview, White Rock, New Mexico 87574.

- i. See Exhibit C-3, attached hereto and made a part hereof for all purposes. The areas on Exhibit C-3 identified with a red "X" represent spaces where County infrastructure and equipment are located. These spaces shall be only accessible by County staff or designee(s), and shall not be made accessible to or accessed by Contractor, its employees, agents, volunteers, or members or patrons of the Premises without County's consent.
- ii. The White Rock Senior Center and Meal Center are available for Senior programming, at a minimum, from the hours of 7:30 a.m. to 4:30 p.m., Monday through Friday, excluding County holidays;
- iii. County and LARSO may negotiate changes in hours or time on an as-needed basis.

4) Delete Exhibit B-1 in its entirety and replace it with Exhibit B-2.

5) Delete Exhibit C-1 in its entirety and replace it with Exhibit C-2.

6) Delete Exhibit C in its entirety and replace it with Exhibit C-3.

Except as expressly modified by this Amendment, the terms and conditions of the Agreement remain unchanged and in effect.

IN WITNESS WHEREOF, the Parties have executed this Amendment No. 2 on the date(s) set forth opposite the signatures of their authorized representatives to be effective for all purposes on the date first written above.

ATTEST

INCORPORATED COUNTY OF LOS ALAMOS

MICHAEL D. REDONDO
COUNTY CLERK

BY: _____
ANNE W. LAURENT **DATE**
COUNTY MANAGER

Approved as to form:

J. ALVIN LEAPHART
COUNTY ATTORNEY

LOS ALAMOS RETIRED AND SENIOR ORGANIZATION,
A NEW MEXICO NON-PROFIT ORGANIZATION

BY: _____
JACCI GRUNINGER **DATE**
EXECUTIVE DIRECTOR

Exhibit "B-2"

AGR-20-42-A2

Schedule as of July 8, 2025

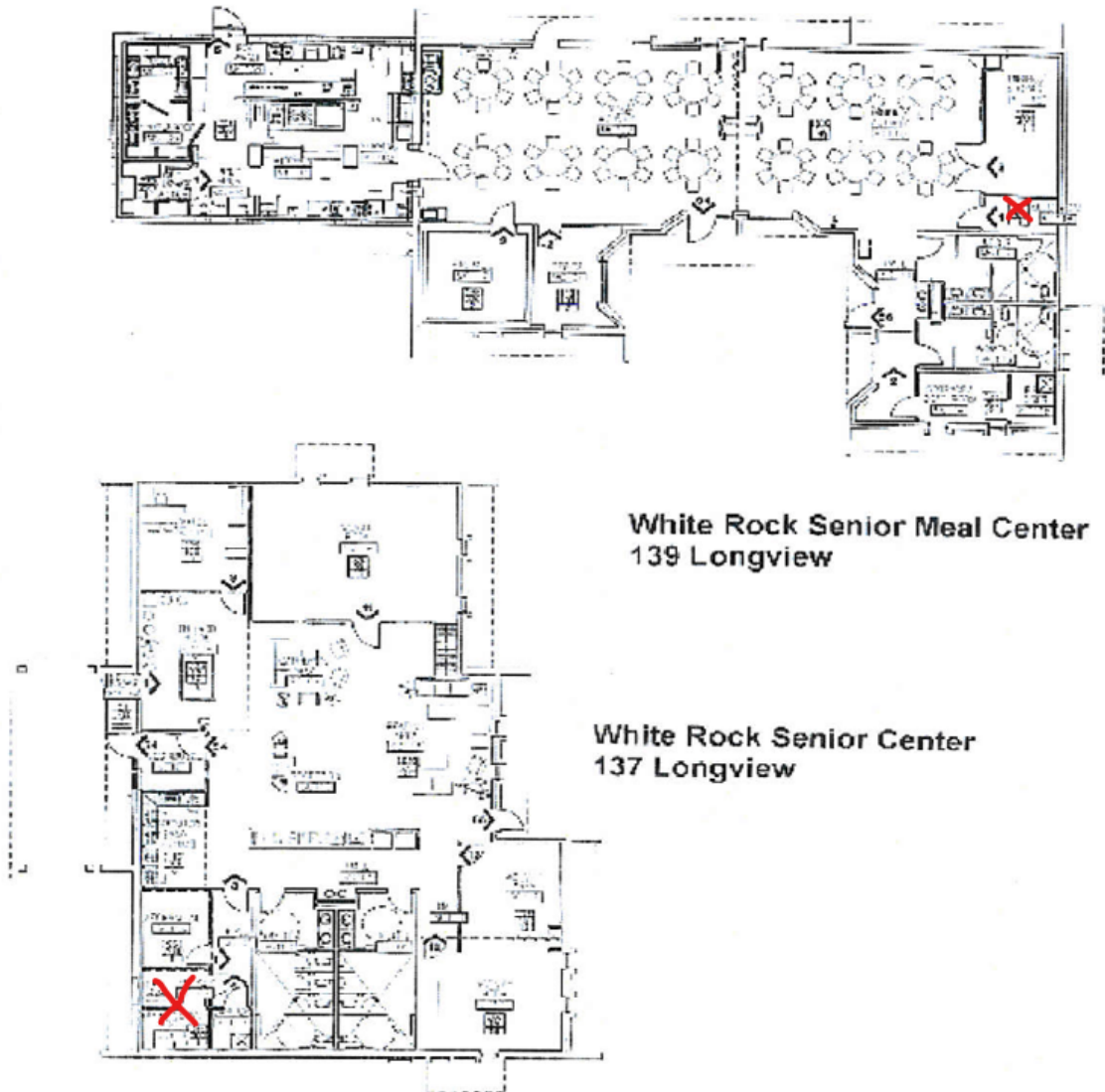
Betty Ehart Senior Center

Time	Room s	Monda y	Tuesda y	Wednesda y	Thursda y	Frida y	Saturda y	Sunda y
Morning	Great Room	(A) 7:30 a.m. – 4:30 p.m.					.	
	Class A/B							
Afternoon	Great Room							.
	Class A/B							
Evening	Great Room							
	Class A/B							

Legend:

(A) Exclusive use of the Betty Ehart Senior Center by Los Alamos Senior Programs (7:30 a.m. to 4:30 p.m. weekdays)

**EXHIBIT C-3
AGR20-42**



The areas identified above with a red "X" represent spaces where County infrastructure and equipment are located. These spaces shall be only accessible by County staff or designee(s), and shall not be made accessible to or accessed by Contractor, its employees, agents, volunteers, or members or patrons of the Premises without County's consent

Exhibit "C-2"

AGR-20-42-A2

Schedule as of July 8, 2025

White Rock Municipal Complex

Time	Rooms	Monday	Tuesday	Wednesday	Thursday	Friday	Saturday	Sunday
Morning	REC Room	7:30 a.m.- 4:30 p.m.						
Afternoon	REC Room							
Evening								

Legend:

At the White Rock Senior Center, Monday through Friday at a minimum, from the hours of 7:30 a.m. to 4:30 p.m., Monday through Friday, excluding County holidays.