



County of Los Alamos

BCC Meeting Minutes

Parks and Recreation Board

1000 Central Avenue
Los Alamos, NM 87544

Chair, Brian Watkins; Vice-Chair, Jerry Cowan; Jacob AlderseBaes; Paula Knepper; George Marsden; Summer Schaufler; and Ian Zollinger, Members

Thursday, September 11, 2025

5:30 PM

1000 Central Avenue
Council Chambers

Public Participation: in person or <https://zoom.us/j/97013443707>

Phone one-tap:

+16694449171,,97013443707# US

+16699006833,,97013443707# US (San Jose)

Join via audio:

+1 669 444 9171 US

+1 669 900 6833 US (San Jose)

1. CALL TO ORDER

Vice Chair Cowan called the meeting to order at 5:30 PM.

Present 4 - Member Cowan, Member AlderseBaes, Member Knepper and Member Marsden

Absent 3 - Member Watkins, Member Zollinger and Member Schaufler

2. PUBLIC COMMENT

No Public Comments

3. BUSINESS

20633-25

Approval of Minutes from the August 14, 2025 Meeting

Attachments: [A - Minutes from the August 14, 2025 Meeting](#)

I move that the Board approve the attached meeting minutes from the August 14, 2025 meeting.

Yes: 3 - Member Cowan, Member AlderseBaes and Member Knepper

Abstain: 1 - Member Marsden

Absent: 3 - Member Watkins, Member Zollinger and Member Schaufler

20634-25

Presentation on Guaje Pines Cemetery Master Plan Design

Attachments: [A - Guaje Pines Master Plan Presentation](#)
[B - Master Plan for Guaje Pines Cemetery, September 2025](#)

Wendy Parker, Parks Superintendent, introduced Stephanie Sloan, with Sloane Consulting Group, and Greg Graham, ASLA with CivisWorks, who presented the Guaje Pines Cemetery Master Plan to the Parks and Recreation Board. They emphasized that Guaje Pines Cemetery is a community gem, and their goal is to preserve its aesthetic beauty while strategically planning to extend its useful life.

Member AlderseBaes commented on the importance of keeping the scenic views from the cemetery unobstructed.

Vice Chair Cowan inquired about the availability and planning for future burial space.

I move that the Parks & Recreation recommend to County Council the Guaje Pines Cemetery Master Plan Design as presented.

Yes: 4 - Member Cowan, Member AlderseBaes, Member Knepper and Member Marsden

Absent: 3 - Member Watkins, Member Zollinger and Member Schaufler

20640-25

Presentation on Artificial Turf Study

Attachments: [B - Los Alamos Turf Study Report](#)
[C - Appendix A - Interview Notes](#)
[D - Appendix B - Community Meetings Presentation](#)
[E - Appendix C - Community Meetings Summary Notes](#)
[F - Appendix D - Community Survey Complete Results](#)
[G - Appendix E - Framework Plans Feedback Survey](#)
[H - Appendix F - Site Assessment Matrix](#)
[I - Appendix G - Artificial Turf Testing and Data Resources](#)
[A - LAC Turf Study Presentation](#)

Wendy Parker, Parks Superintendent, introduced Ania Pastuszezwska, Lead Project Manager with NV5, Inc., and Todd Smith, Principal Civil Engineer with R&R Engineers, who presented the Artificial Turf Study to the Parks and Recreation Board. The study addresses the growing demand for multi-use athletic fields, focusing on North Mesa Sports Complex and Overlook Park.

Vice Chair Cowan commented on cost estimates concerns and the lack of multi-use fields in the plan.

Member Knepper had a question about irrigation costs.

Member AlderseBaes had a question about the inclusion of Spirio Field and lack of lighting there.

Member Marsden had a question about long-term costs.

Dina Pesenson noted the importance of also presenting to the Environmental Sustainability Board (ESB).

Lisa Reader commented that the project is a broader redevelopment plan including equestrian trail connectivity.

Shannon Blair, Chair of ESB, expressed interest in reviewing the study and receiving a presentation.

Wendy Parker, Parks Superintendent, clarified this is a feasibility study, not a master plan, intended to gauge community interest in pursuing the concept further.

I move that the Parks & Recreation Board table the Artificial Turf Study as presented and refer it to the Environmental Sustainability Board (ESB) for review and input prior to submission to the County Council.

Yes: 4 - Member Cowan, Member AlderseBaes, Member Knepper and Member Marsden

Absent: 3 - Member Watkins, Member Zollinger and Member Schaufler

PRESENTATIONS, PROCLAMATIONS, & RECOGNITIONS

[20632-25](#) Parks and Recreation Board Year-End Presentation-Fiscal Year 2025

Attachments: [A - FY25 PRB Year End Presentation](#)

Chelsea Ashcraft, Senior Management Analyst for the Community Services Department (CSD), presented the department's year-end review, highlighting staff contributions and accomplishments over the past year.

No Comments.

[20649-25](#) Presentation on Revised Open Space Management Plan

Attachments: [A - Los Alamos County Open Space and Trails Master Plan - August 27, 2025](#)
[B - Open Space and Trails Master Plan Comments - August 27, 2025](#)

Wendy Parker, Parks Superintendent, provided a follow-up on revisions made to the Open Space and Trails Master Plan, including a summary of citizen comments received.

Craig Martin, liaison to the Open Space & Trails Working Group, noted a few additional changes and thanked staff for addressing previous concerns and making corrections.

4. BOARD/STAFF COMMUNICATIONS

[20648-25](#) Chairman's Report - Presented by Vice Chair Cowan

Vice Chair Cowan delivered the Chairman's report, noting that the Adopt-a-Trail and Bike Park presentations are scheduled for October 7 at the County Council Meeting and encouraged members to attend in support. He also thanked County staff for their dedication and hard work during the recently concluded Summer Concert Series, acknowledging the long hours, weekends, and evenings they committed.

20646-25

Staff Report

Attachments: [A - PRB Monthly Updates](#)

Wendy Parker, Parks Superintendent, provided updates on the athletic courts at East Park and North Mesa, and briefly touched on the Open Space and Trails Master Plan. She noted delays in field renovations and shared that the Rose Garden fence installation is also delayed due to material availability.

Vice Chair Cowan had question about Brewer Arena,

Member AlderseBaes asked for an update on Spirio Field.

Katherine Hudspeth, Recreation Superintendent, gave an update on the Summer Concert Series and reported that the barriers around Ashley Pond would be removed on September 20. The Golf Course will open with all 18 holes available Wednesday through Sunday starting September 24. The Fall Activity Guide is now available. The Aquatic Center will offer adult volleyball on the third Saturday of each month. Upcoming events include a Horse Show, the Bathtub Gravity Race, and the annual Pumpkin Splash.

Wendy Parker also noted that the grass beneath the Ashley Pond barriers will likely be dead and unsightly, but the County is exploring ways to improve the appearance of that area.

20647-25

Work Group and Task Force Assignments and Updates

Attachments: [A - Open Space Working Group Status Report](#)

Vice Chair Cowan provided an update on the Equestrian & Livestock Working Group Report as well as the Open Space & Trails Report.

No Comments.

5. COUNCIL COMMUNICATIONS

Council Member Reagor reported that Policy 1735 was approved by the County Council last week.

No Comments.

6. PREVIEW OF NEXT MEETING**7. ADJOURNMENT**

Vice Chair Cowan adjourned the meeting at 7:38 PM.

If you are an individual with a disability who is in need of a reader, amplifier, qualified sign language interpreter, or any other form of auxiliary aid or service to attend or participate in the hearing or meeting, please contact the County Human Resources Division at 505-662-8040 at least one week prior to the meeting or as soon as possible.

Public documents, including the agenda and minutes can be provided in various accessible formats. Please contact the Community Services Department at 505-662-8241 if a summary or other type of accessible format is needed.

Los Alamos County

Artificial Turf Study

P a r k s & R e c B o a r d





Photo courtesy Los Alamos Daily Post

Introductions

Ania Pastuszewska
NV5, Inc.
Lead Project Manager



Lisa Gavioli
NV5, Inc.
Project Manager

Shasta Meehan
Sites Southwest
Landscape Designer



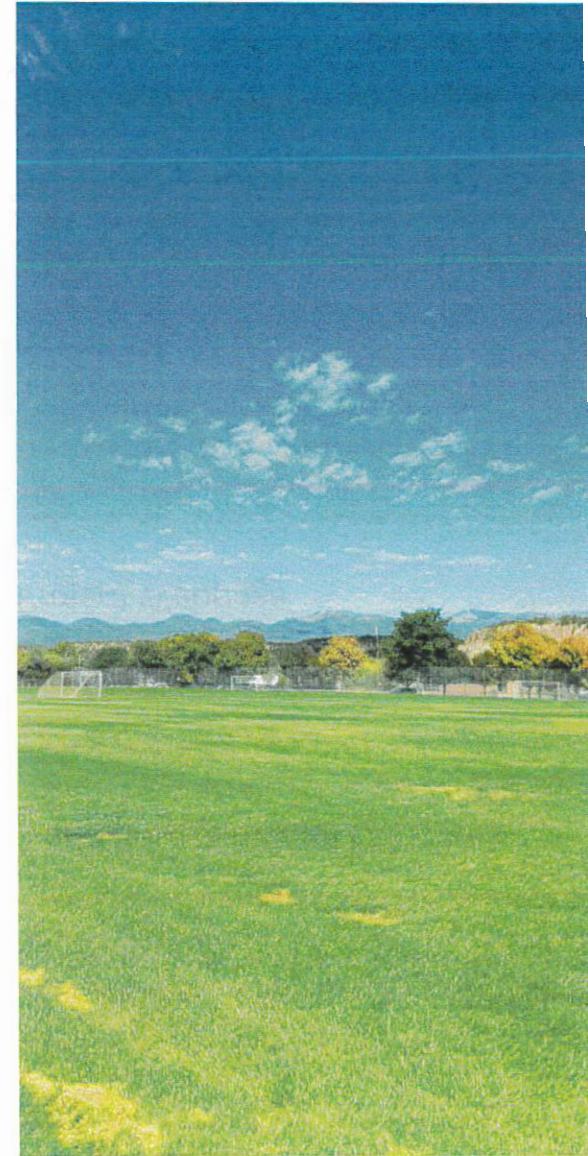
George Radnovich
Sites Southwest
Principal Landscape Architect

Todd Smith
R&R Engineer
Principal Civil Engineer



Purpose of the Study

- The Study was driven by increasing demand for high-quality, multi-use athletic fields capable of supporting a growing number of teams, leagues, and year-round programming, specifically at North Mesa Sports Complex and Overlook Park.
- Key goals included identifying opportunities to improve field safety and playability, address maintenance challenges, optimize site layouts, and extend field usability through artificial turf installation where appropriate.
- Make recommendations for field realignment/reconfiguration, synthetic turf products and installation options, accessibility, amenities, lighting, maintenance and management.



Process of the Study

- Public Engagement and Active Collaboration with User Groups and LAC Staff
- Collect Feedback regarding: Field User Experience, Desired Improvements, Human and Environmental Concerns
- Assessment of Existing Conditions
- Analysis of the Above
- Recommendations
- Cost Estimates and Phasing Plans
- Deliverable: Artificial Turf Conceptual Study Report – current version uploaded to Project Webpage



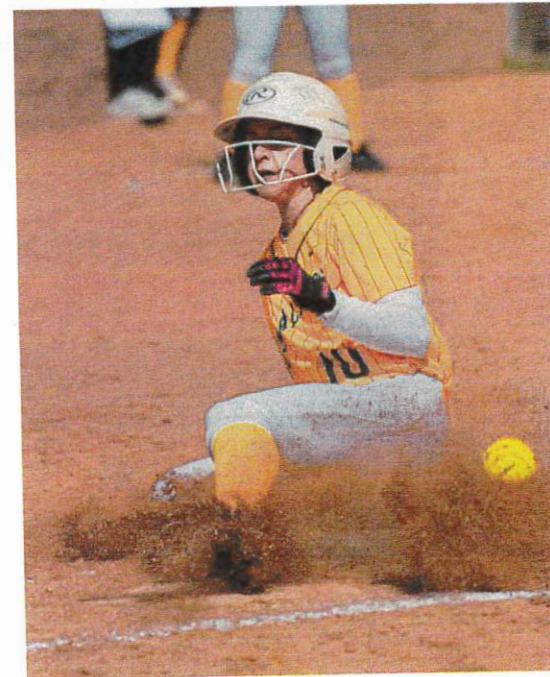
Public Engagement

Table 2.1 Summary of Meeting Dates and Focus

Meeting	Date	Focus/Format	Key Topics
Meeting 1	October 30, 2024	Listening Session 1	Initial community values, experiences, needs and priorities
Meeting 2	January 30, 2025	Listening Session 2	Field usage patterns, concerns, desires, and preferences
Meeting 3	February 27, 2025	Concept Presentation	Field layout options, co-location of facilities, field re-orientation, parking and circulation, flex fields
Meeting 4	April 23, 2025	Concept Refinement	Refinement of field layout options, amenity concepts
Meeting 5	May 15, 2025	Final Framework Review	Full plan review, prioritization, and lighting concepts

Public Engagement

- **Focused Group Interviews:**
 - Los Alamos Public Schools (LAPS)
 - Los Alamos Youth Soccer League (LAYSL)
- **Community Survey:** 216 responses (Closed February 7th)
- **Follow up Feedback Survey:** 141 responses (Closed March 31st)
 - **Insights shared by the following groups:**
 - Los Alamos Little League
 - Los Alamos Youth Lacrosse
 - Los Alamos Softball Association
 - Los Alamos Adult Competitive Soccer
 - Los Alamos Extreme (youth football)
 - Athletes, parents, and supporters of youth, LAPS, and adult sports
 - Dog park users
 - Residents of surrounding neighborhoods and LA County generally
 - Residents of Espanola, Pojoaque, Santa Fe, Nambe, and surrounding areas
- **Project Webpage hosted by LAC to post relevant information/notices**
- **Dedicated Project Email for public input**



Public Engagement – Process for Gathering Information

- **Community Engagement via Listening Sessions and Concept Reviews**
 - Questions and Comments were written down during the meeting on an easel.
 - Compiled into summary notes and posted on Project Website along with the presentation for each meeting.
- **Focused Group Interviews:**
 - Summary notes were compiled and distributed.
- **Community Survey:**
 - Gathered initial feedback
 - Survey Monkey analytics
 - Detailed review of the above and presentation to the public at the following public meeting PEM #1
- **Follow up Feedback Survey:**
 - Gathered feedback on proposed Framework Plans
 - Survey Monkey analytics
 - Detailed review of the above and presentation to the public at the following public meeting PEM #4



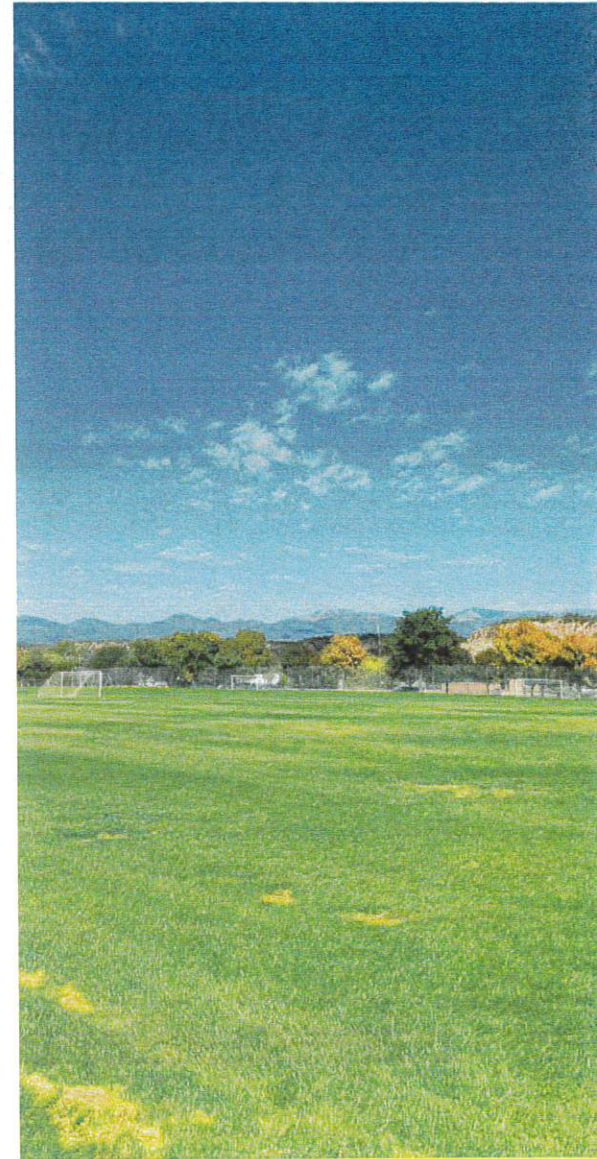
What we've heard

Field User Experiences:

- Concern about the number of injuries attributable to the current condition of natural turf at North Mesa and Overlook.
- Due to conditions on all fields, overuse on particular fields, and scheduling conflicts, the number of existing fields cannot accommodate the demand for games and practices.
- Grass at soccer fields is often too high for effective play.
- Gopher holes are particularly an issue at Bomber and Senior fields but are present at all fields.
- Fields are used seven days / week, but much more frequently Monday through Friday.
- Not enough options for youth football and lacrosse (sharing facilities with soccer).

Desired Improvements:

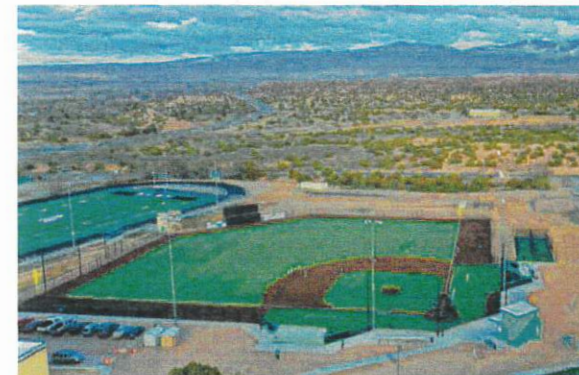
- Options for flex / multiuse fields should be considered when evaluating field realignment, consolidation, and artificial turf renovations.
- Consider dugout improvements, more batting cages, athlete changing rooms, better storage for teams, more bathrooms, safety netting, shade structures for spectators and players, and scoring booths.
- Co-locating baseball and softball game fields would be more convenient for families, would increase attendance, and create more opportunities for new programs, concessions / fundraising.
- Parking and circulation needs improvement at both North Mesa and Overlook.
- Install or upgrade lighting at more fields -this will increase playing time.
- Consider improved/expanded transportation options to/from facilities.
- Expand/improve access to drinking water.
- Higher (15-ft) fencing behind goals at soccer fields, extending 30 ft on both sides of goal.
- Retain as many trees as possible at the facilities (provide much needed shade).
- Accessible pathways, parking, restrooms, seating all need improvement.



What we've heard

Concerns about Human and Environmental Impacts

- **Artificial Turf:**
 - Presence of PFAS / “forever chemicals” in materials
 - Resulting “microplastics” in the environment
 - Life-cycle / recyclability of the materials
 - Increased temperatures during warmer months
 - Water-use to cool down artificial turf
 - Increased risk of abrasions and skin infections
- **Natural Turf:**
 - High water use to maintain natural turf
 - Pesticide & fertilizer use on natural turf
 - Gophers creating significant safety hazards to athletes and pest management challenges for County staff
 - High maintenance demands exceed capacity
 - Grass fields need more resting time than they currently get, leading to overuse



Addressing Needs, Wants and Concerns

Field User Experience and Desired Improvements: Iterative process

- Project team systematically collected, reviewed, and synthesized input gathered via Public Engagement Process, including interviews, community meetings, public surveys, and direct email correspondence.
- Identified key themes and areas of concern, helped refine the guiding questions and objectives of the analysis, and influenced the development of preliminary site concepts within the broader framework plans.
- Gathered insights informed targeted recommendations that respond to the community's priorities, operational needs, and long-term vision for athletic field use in Los Alamos.
- Recommendations captured in the Report and Framework Plans

Human and Environmental Impacts

- Project team compiled research by other Subject Matter Experts, and posted on Project Webpage
- Research informed recommendations, such as specifying cradle-to-cradle system, with products that meet recognized standards for material health and environmental stewardship.

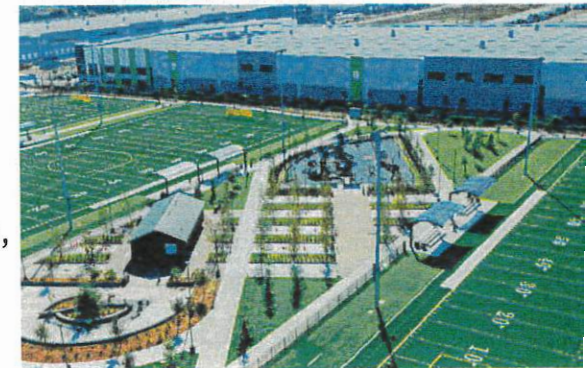


Table 5.4: Summary of Study Recommendations		
Recommendations	North Mesa Sports Complex	Overlook Park
Artificial Turf	Synthetic turf for high-use fields. Recommended installation for Bomber field and Lou Caveglia field.	Synthetic turf for high-use fields. Recommended installation for Hope Field, X Lovato, and Dara Jones field.
	Synthetic turf product: Recycled tufted turf with a resilient recycled infill (cooling effect optional), permeable cradle to cradle pad, with a gopher resistant wire mesh installed at the turf foundation.	Synthetic turf product: Recycled turf with a resilient recycled infill (cooling effect optional), permeable cradle to cradle pad, with a gopher resistant wire mesh installed at the turf foundation.
Accessibility Improvements	Implement phased upgrades. Short-term Goals: Improved parking surfaces, ADA-compliant ramps, pedestrian connectivity, accessible site furnishings and updated lighting systems. Long-term Goals: field realignments, centralized accessible walkways, grade adjustments for accessibility, accessible site furnishings and improved lighting systems.	Implement phased upgrades. Short-term Goals: Improved parking surfaces, ADA-compliant ramps, pedestrian connectivity, accessible site furnishings and updated lighting systems. Long-term Goals: field realignments, centralized accessible walkways, grade adjustments for accessibility, accessible site furnishings and improved lighting systems.
Circulation and Vehicular Access	Concentrate parking near the highest-use fields, add a secondary access from San Ildefonso Rd., and relocate overflow parking to a central, larger footprint to improve access, navigation, and event capacity.	Enhance vehicle and pedestrian connectivity between the north and south areas with more defined entrances, reorganized and expanded parking layouts, and improved signage to optimize usability and navigation.
Lighting Systems	Short-term goals: Update existing lighting systems Long-term goals: Install new Light-Structure System with Total Light Control for Lou Caveglia, Senior, Bun Ryan, and Bomber fields, using shared poles to illuminate adjacent fields.	Short-term goals: Update existing lighting systems Long-term goals: Install new Light-Structure System with Total Light Control for Hope, Byers, X Lovato, Virchow, Fields 1-3, and Dara Jones, using shared poles to illuminate adjacent fields.
Field Maintenance	Natural Turf: Maintain natural fields through regular mowing, aeration, fertilization, seeding, and infield care for baseball/softball, with more intensive mid-season top dressing to reduce compaction and promote healthy turf. Artificial Turf: Redistribute infill every 2-3 hours of play, weekly grooming, and routine debris removal to ensure consistent performance and longevity.	Natural Turf: Maintain natural fields through regular mowing, aeration, fertilization, seeding, and infield care for baseball/softball, with more intensive mid-season top dressing to reduce compaction and promote healthy turf. Artificial Turf: Redistribute infill every 2-3 hours of play, weekly grooming, and routine debris removal to ensure consistent performance and longevity.

Table 5.4: Summary of Study Recommendations		
Recommendations	North Mesa Sports Complex	Overlook Park
Renewable Energy Technology	Provide 4 EV parking spaces in the primary lot, incorporate solar panels on all new shade structures and buildings, and equip irrigation systems with solar controllers to enhance sustainability and future adaptability.	Provide 4 EV parking spaces in the primary lot, incorporate solar panels on all new shade structures and buildings, and equip irrigation systems with solar controllers to enhance sustainability and future adaptability.
Amenities and Enhancements	Provide new restrooms, a concessions/equipment facility, playground with shade, pedestrian seating, EV and ADA parking, food truck and bus zones, batting cages, dugouts, player benches, bleachers with shade, announcer booths, and maintenance/equipment sheds	Provide new restrooms, a concessions facility, playground with shade, pedestrian seating, perimeter walking trail, EV and ADA parking, food truck and bus zones, batting cages, dugouts, player benches, bleachers with shade, announcer booths, equipment sheds, and basketball courts
Realignment of Fields	Reorient Minor, T-ball, Lou Caveglia, and Senior fields into a clover-leaf layout with enlarged field sizes, and provide centralized pedestrian areas between fields.	Reorient Byers and X Lovato fields with expanded field sizes, create a larger central parking area, centralized pedestrian corridors, and relocate the dog park and training areas to reduce user conflicts.
Artificial Field Player Equipment	Athletes must use artificial-turf-appropriate shoes with rubber or soft plastic cleats instead of metal cleats.	Athletes must use artificial-turf-appropriate shoes with rubber or soft plastic cleats instead of metal cleats.
Artificial Field Equipment	Maintain artificial turf using sweepers and groomers every 1-2 weeks, with targeted infill redistribution in high-use areas, supported by an appropriate utility vehicle.	Maintain artificial turf using sweepers and groomers every 1-2 weeks, with targeted infill redistribution in high-use areas, supported by an appropriate utility vehicle.



Photo courtesy Los Alamos Daily Post

Next Steps

- Study Report to be approved by Parks & Rec Advisory Board in September/October.
- Final report to be approved by City Council in October/November.

Stay in Touch!



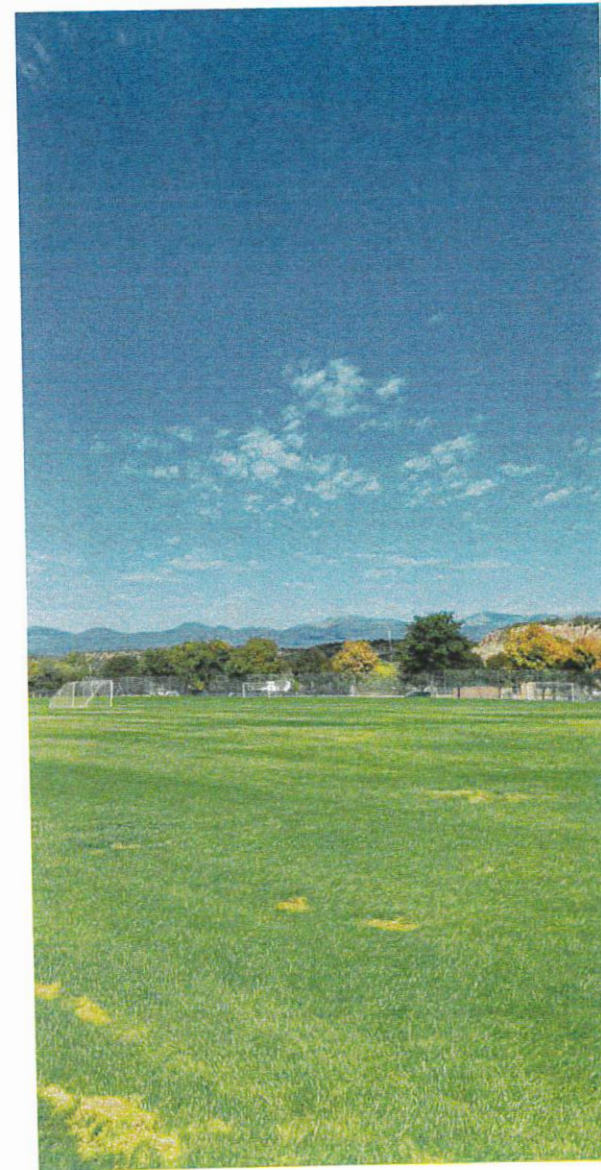
[https://www.losalamosnm.us/
County-Projects/Artificial-Turf-Study](https://www.losalamosnm.us/County-Projects/Artificial-Turf-Study)



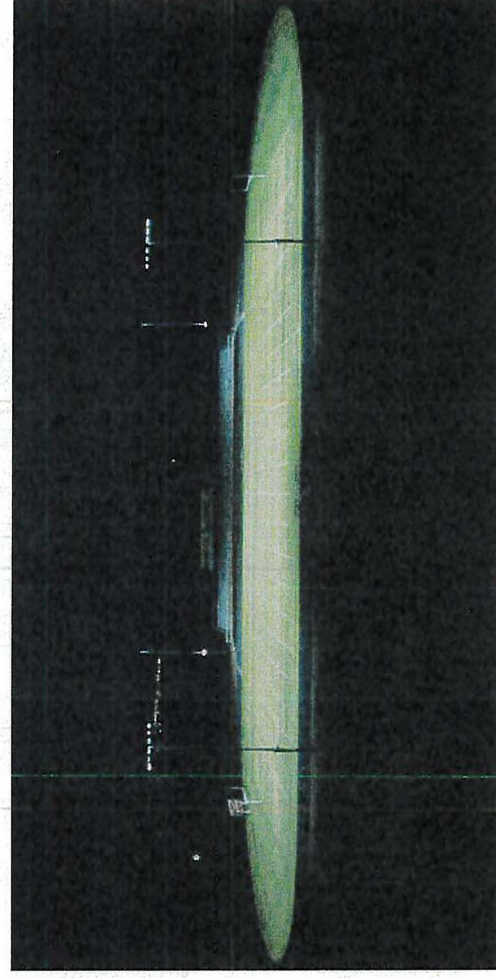
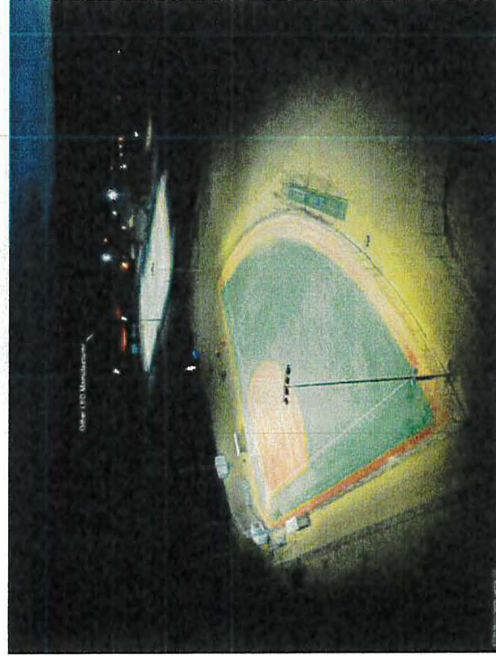
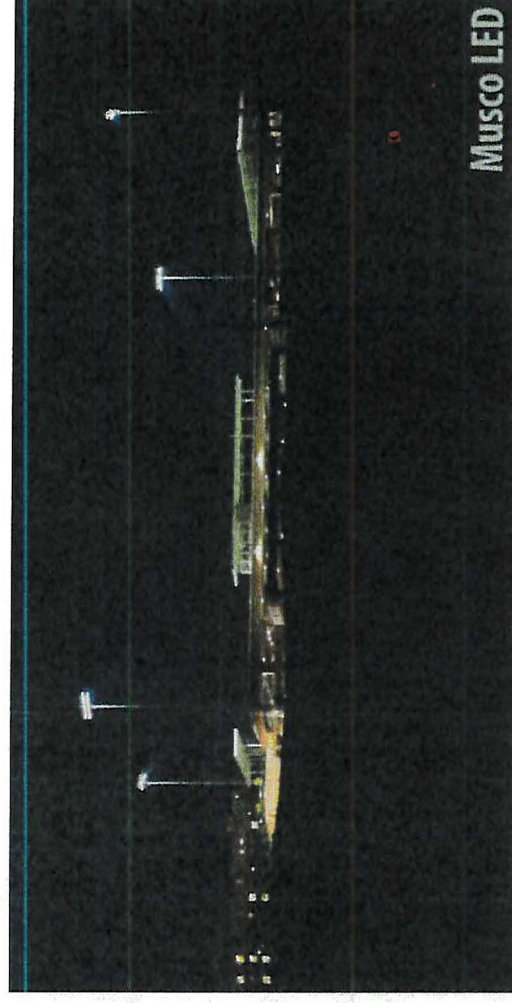
lacturfstudy@nv5.com

Back pocket slides

- **Lighting illustration**
- **Selected illustrations from the report**



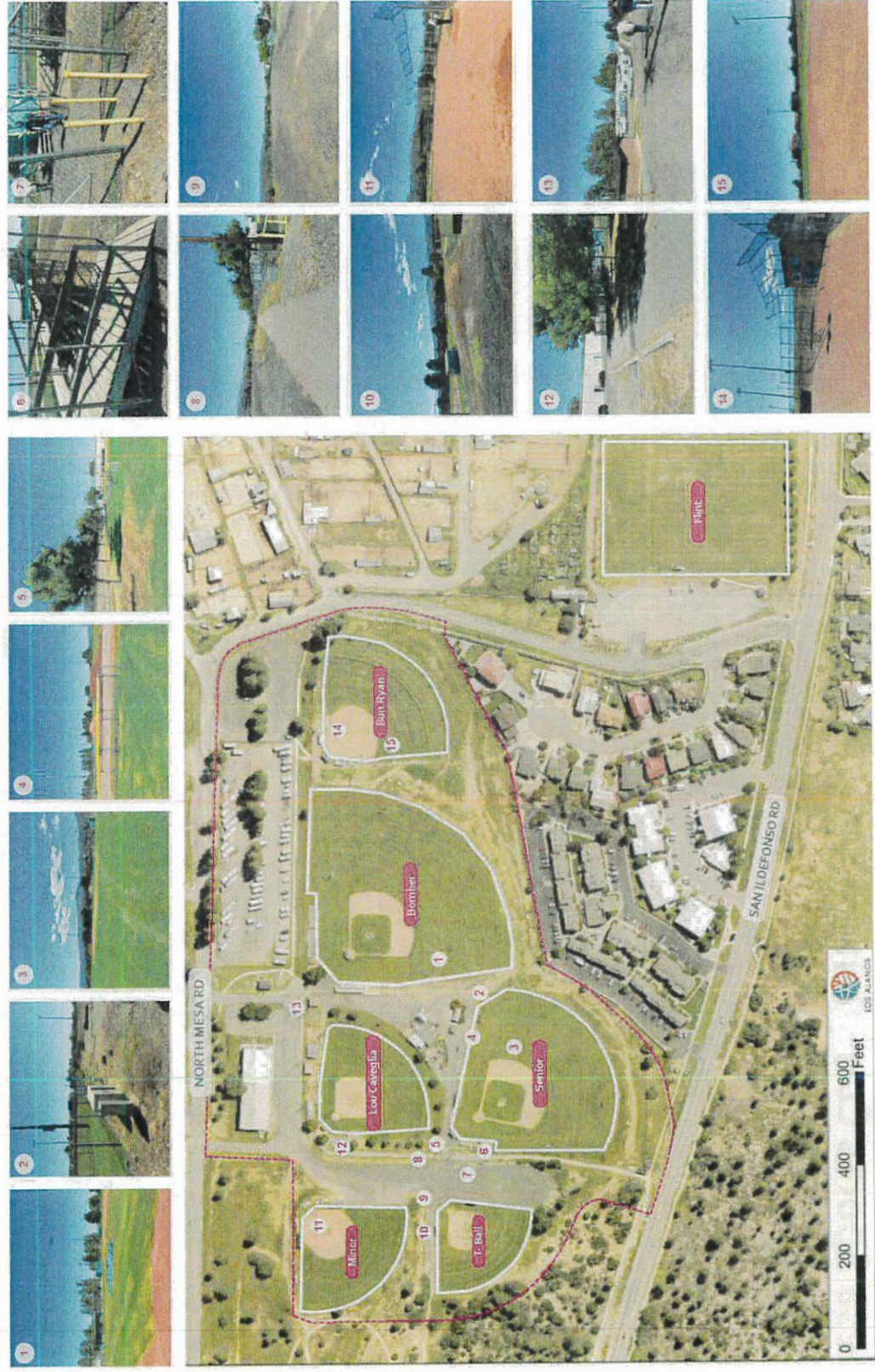
Proposed Lighting Improvements



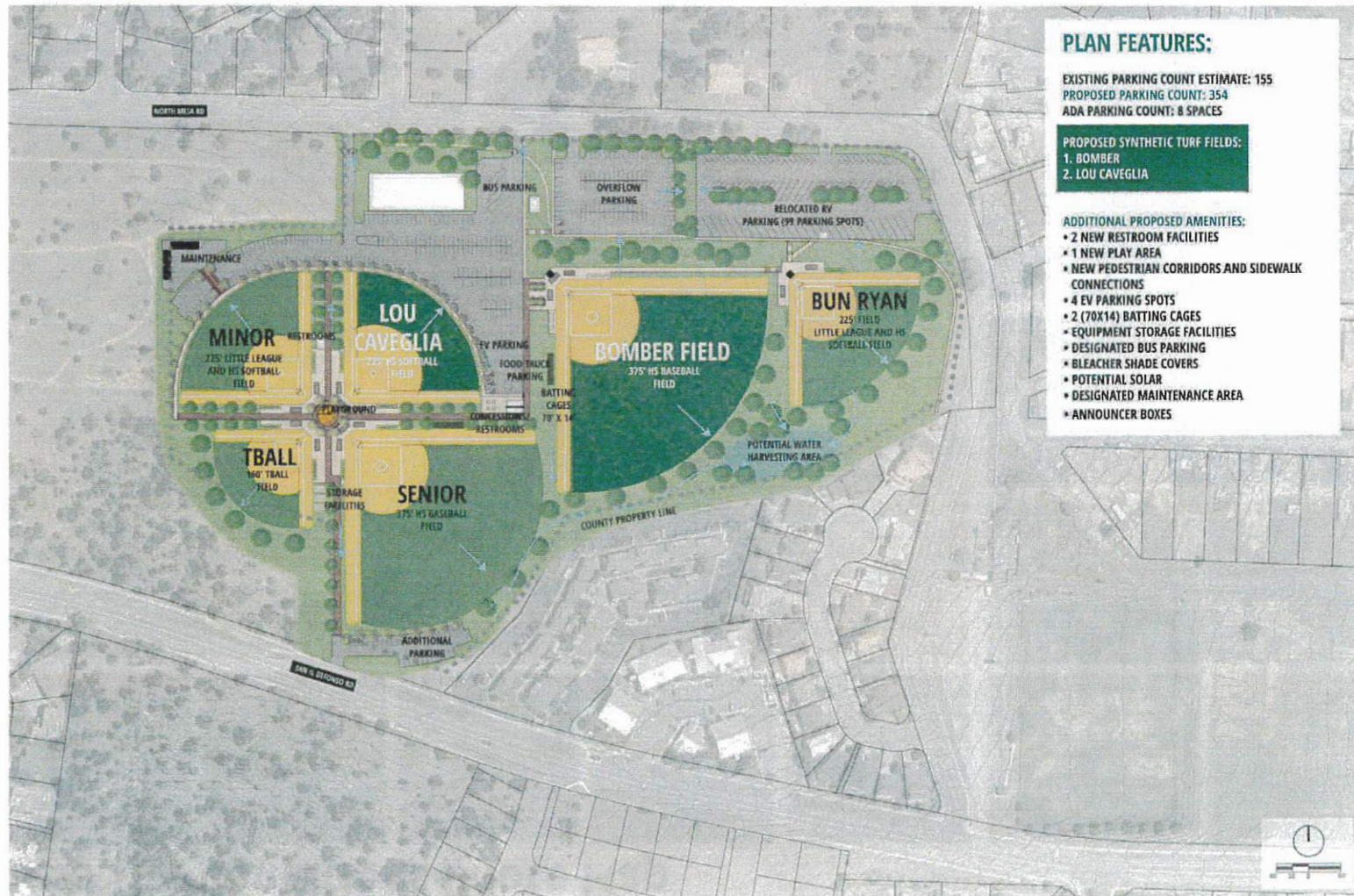
North Mesa Athletic Fields



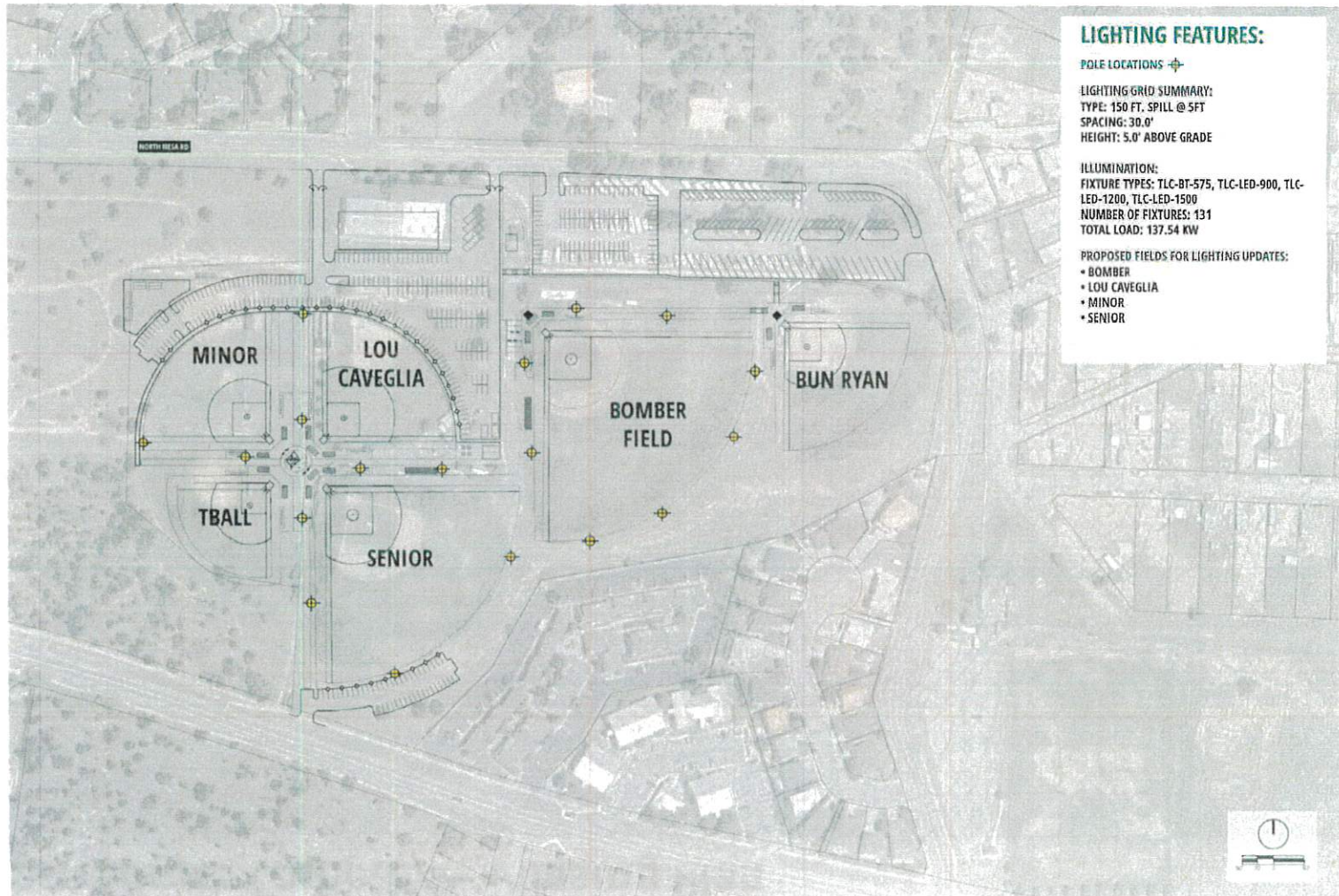
North Mesa Site Conditions Photo Map



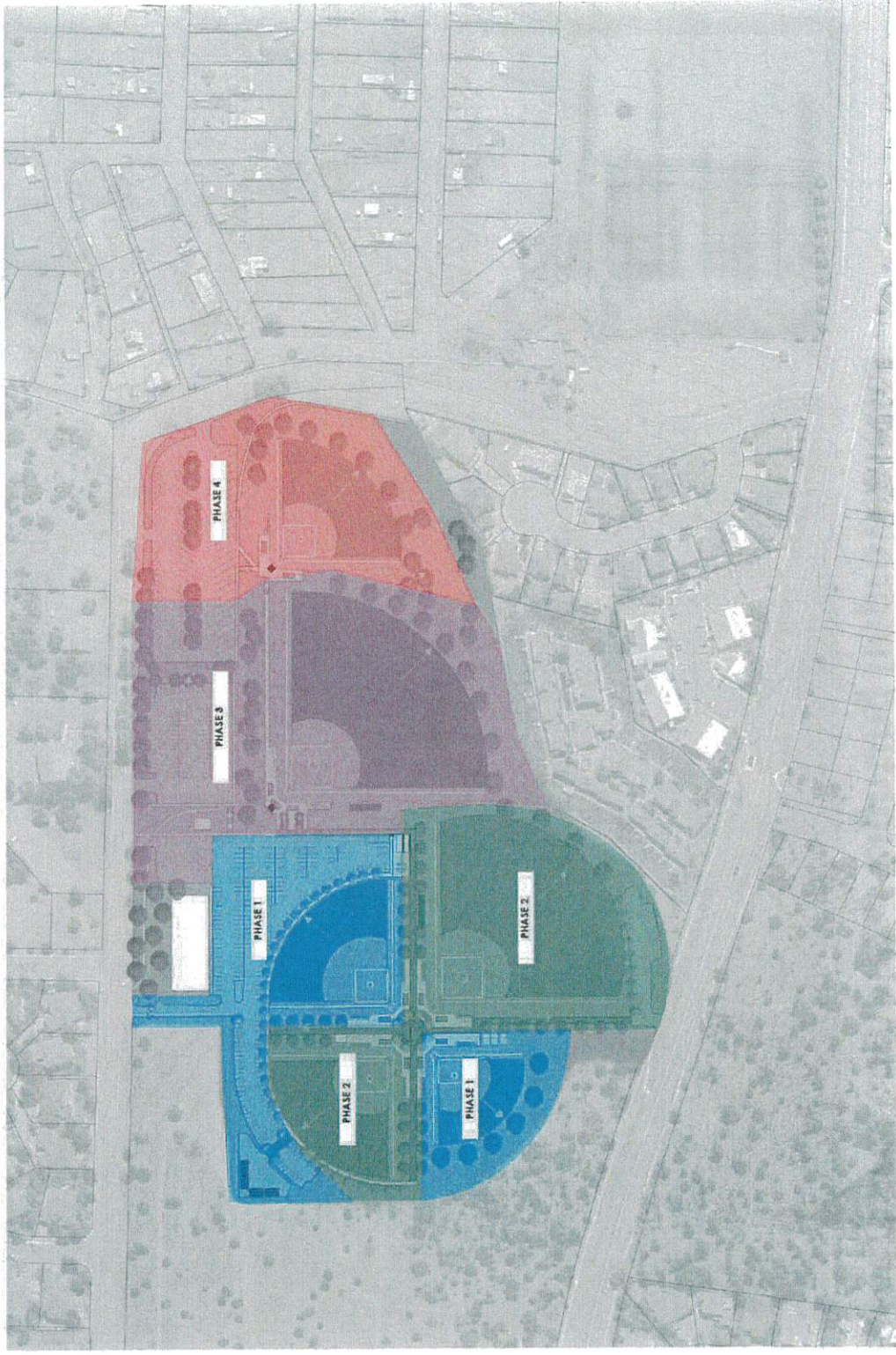
North Mesa Sports Complex



North Mesa Sports Complex – Lighting Improvements



North Mesa Sports Complex – Phasing Plan



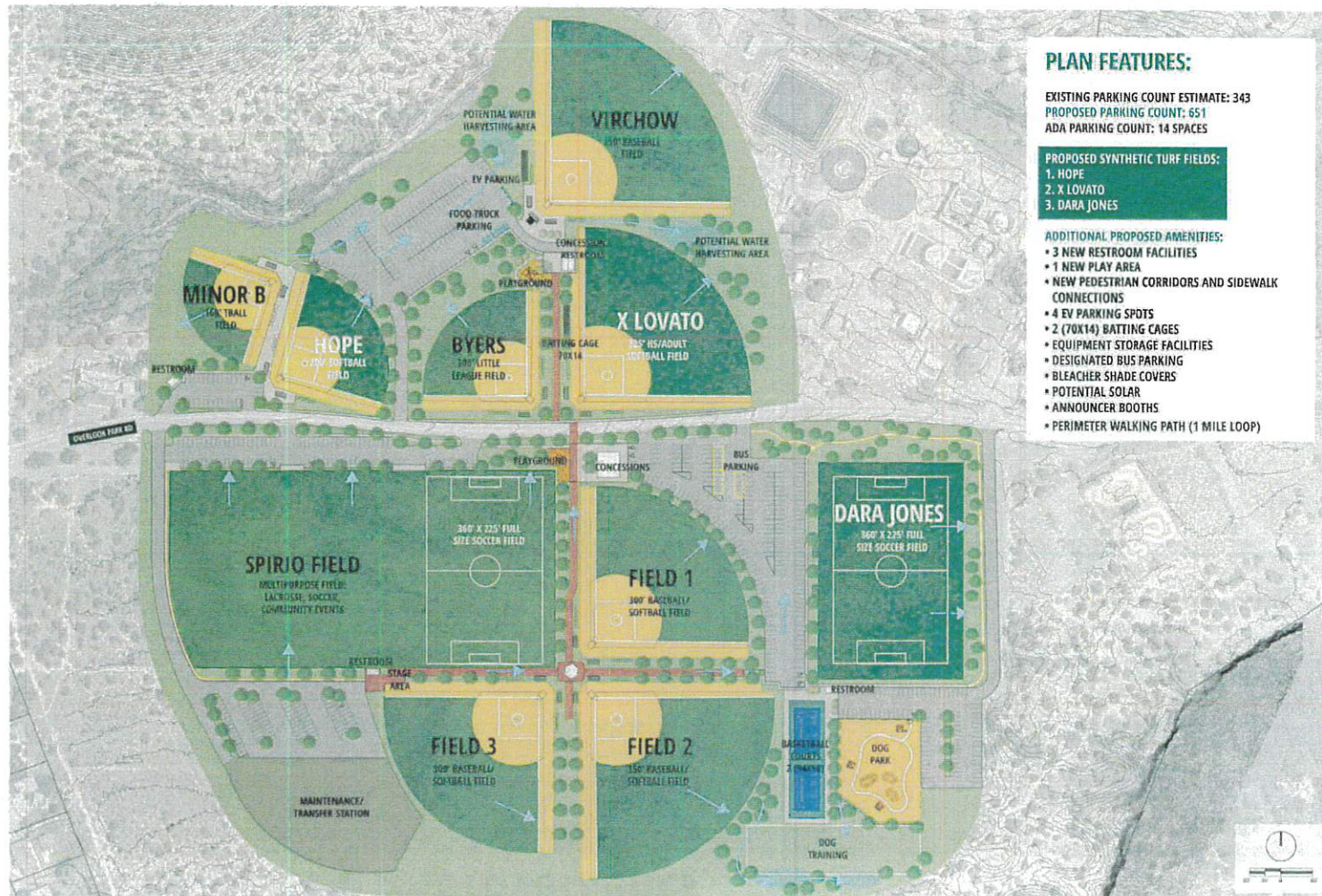


White Rock Athletic Fields

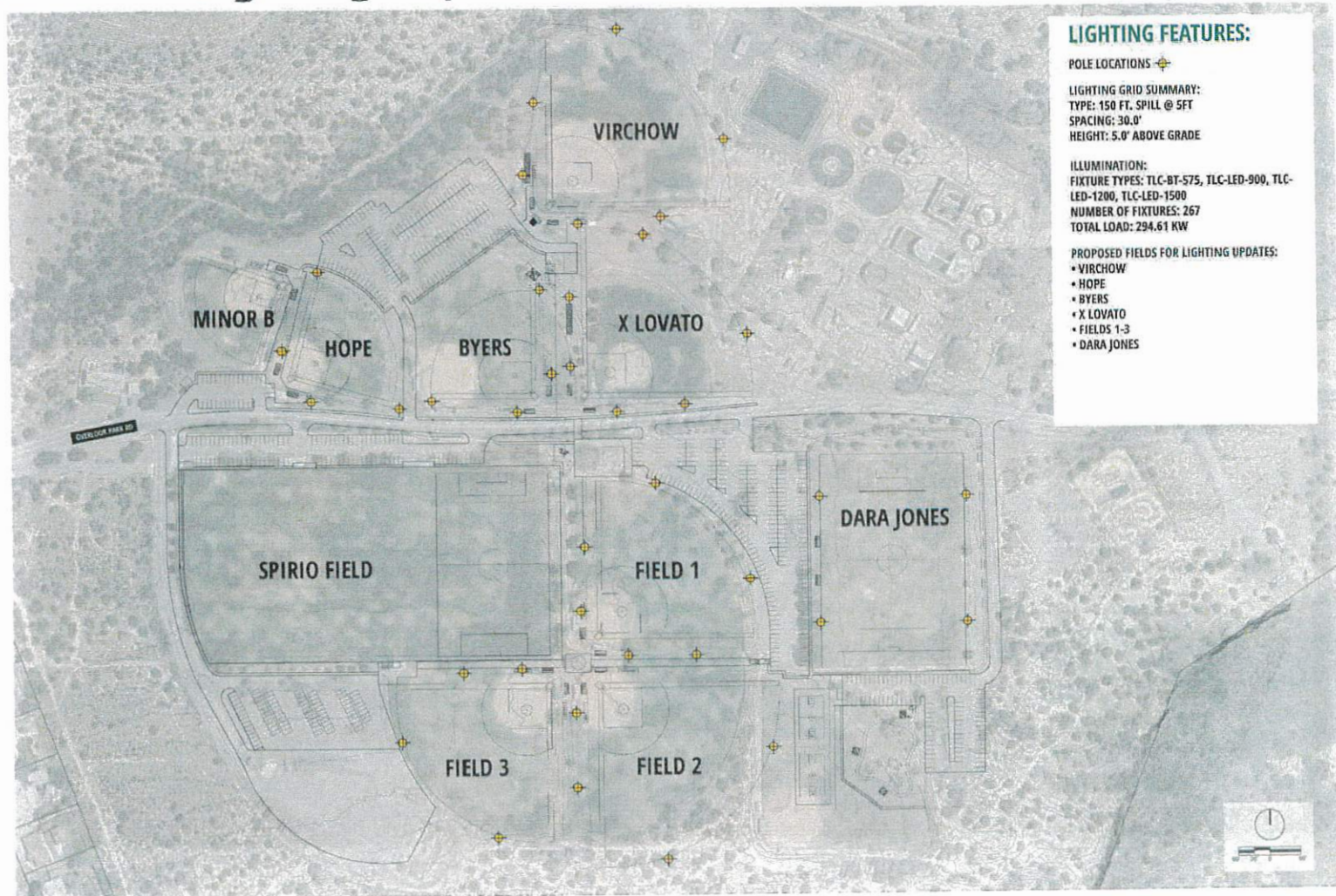
Overlook Park Site Conditions Photo Map



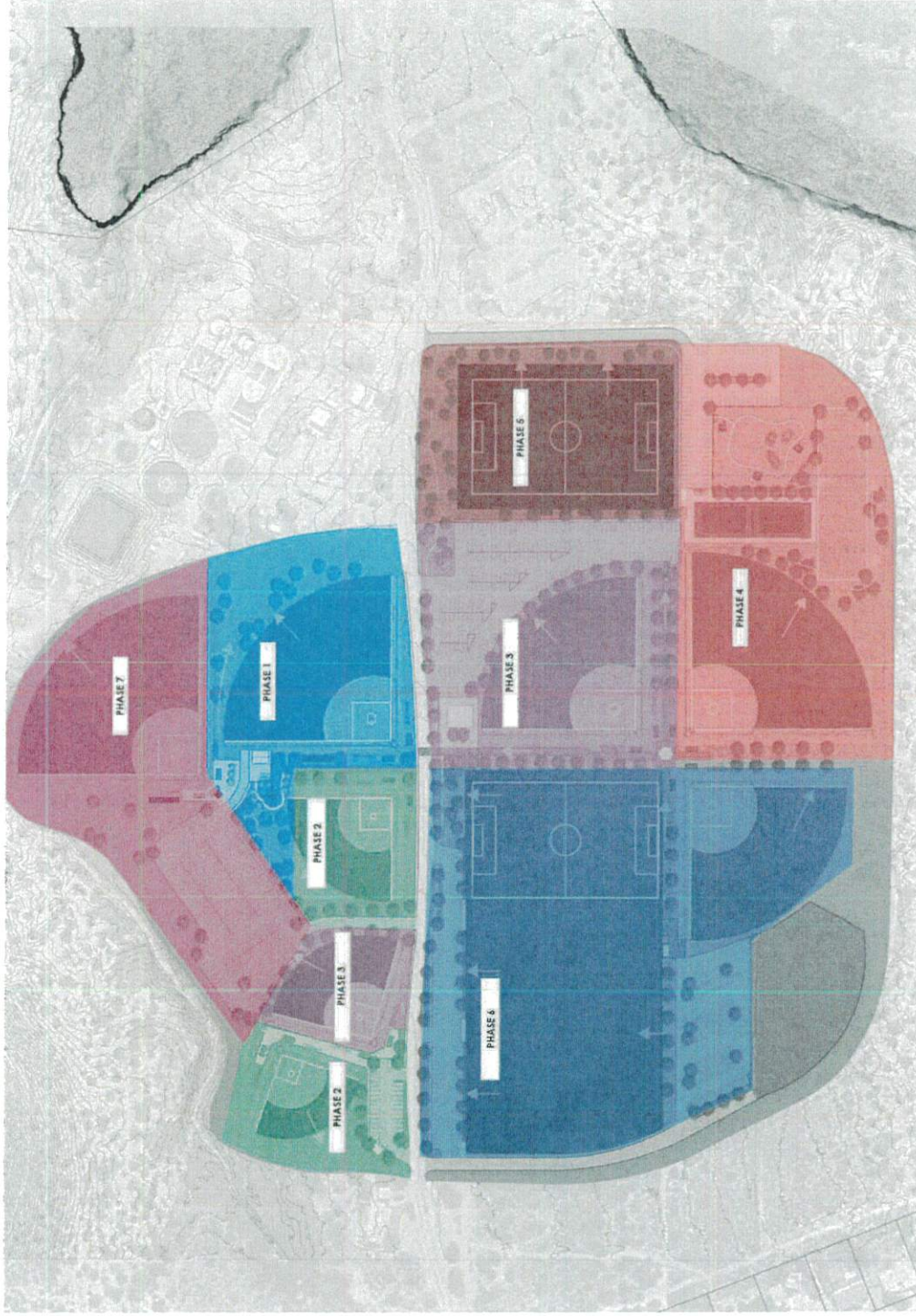
Overlook Park



Overlook Park – Lighting Improvements



Overlook Park – Phasing Plan



Citizen Input to the Proposed Open Space Plan and its Appendices

August 5, 2025

By Kevin Holsapple, member of the Open Space Working Group and the Lodger Tax Advisory Board

Please use my input to make improvements to the proposed plan. I read it with an eye toward whether it responded to prior OSWG and citizen inputs.

1. Overarching Scope and Emphasis (Open Space vs. Trails)

- **OSWG Concern:** A significant concern highlighted by the OSWG, was that the County's initial contractor-led listening sessions "emphasized trails and amenities over open space resources". Respondents to the OSWG survey expressed "disappointment with the perceived 'almost complete lack of emphasis on 'open space'" and felt there was "Lots about trails, almost nothing about open space!". Some even suggested the updated effort should solely be a "Trails Management Plan" and that the 2015 Open Space Management Plan should be updated separately. Despite this, a significant majority (87%) consider "passive open spaces" to be "Very important" to the community's quality of life. Open spaces are viewed as "critical to our sustainability as a community," "high value Los Alamos assets," and "jewels".

- **Recommendations:**

There was significant revision from prior materials that were shared.

- The plan includes a dedicated section titled "Open Space Maintenance & Improvements", which outlines strategies for cultural and historical resource protection, conservation, and restoration (including location-specific projects), wildfire mitigation, and sensitive species/habitat management. **No action requested.**
- The **"Guiding Principles" for Open Space Maintenance & Improvements** explicitly state that "Every effort will be made to balance use and accessibility with conservation and protection of cultural, historical, and natural resources" and to "Provide effective environmental stewardship". If adhered to, this could address the public's desire for balanced management and conservation. **No action requested.**

2. Clarity and Trust in Open Space Definitions and Rezoning - **Not the purview of the Parks & Recreation Department or Open Space and Trails Management plan.**

- **OSWG Concern:** There is "significant public confusion and disagreement" with the County's official definitions of "Active Open Space (OS-AO)" and "Passive Open Space (OS-PO)". Respondents felt these definitions "muddle the distinct difference between conservation lands and recreational land uses", leading to a common concern that "OS-AO seems like just a sneaky way to designate open space for development". The public also identified specific areas currently zoned as "Active Open Space" that they

believe should be re-zoned to "Passive Open Space" (e.g., lower Bayo Canyon, areas south of the golf course, areas along the Canyon Rim Trail, area in Pinon Park). A strong majority (56%) believe it should be "Very difficult" for the local government to rezone passive open spaces for other uses.

- **Recommendations:**

- The proposed plan states: "While engaging citizens, the Parks and Open Space Division will **update the county development code and develop necessary county laws and zoning regulations that support and protect trails, trail access, and natural and cultural resources within trail corridors**". This is quite broad and does not clearly address the concerns expressed. Some, but not all of the areas discussed by OSWG for passive open space zoning are addressed on the included maps (see separate document for additional areas that should be rezoned to "passive open space.").
- The input about making it difficult to rezone passive open space didn't appear to be addressed.

3. Public Engagement and Trust in County Processes

- **OSWG Concern:** The OSWG survey revealed a "low level of agreement that the County considers public input in decision-making" and that the public participation process had been ineffective. Many felt that County management "wants to 'appear that they listen and care, but nix any meaningful development projects'". There was a strong desire for the County to "implement existing plans rather than continuously hiring consultants and 'recreating plans they already have'".

- **Recommendations:**

- The plan dedicates a section to "**Public Education and Engagement**" but it does not say much about input provided by OSWG. **All input methods were reviewed together to provide a holistic view of the community's desires.**
- The plan commits to "**Integrate advice and guidance from local groups and organizations**".but does not discuss the extent to which this was accomplished.
- Under "Trail Stewardship," the plan states the Parks and Open Space Division "**will involve the community in trail planning, development, and maintenance by holding public meetings on trail issues when appropriate**". It also pledges to "organize and support, volunteer trail building, maintenance, and remediation activities through the County volunteer project coordinator, local trail user groups, and other agencies". It isn't clear what "when appropriate" means. It would be clearer to say that OSWG will be requested to review and provide recommendations/feedback for all of these matters. **Coordination with community groups is listed as on-going in the Implementation Table. Further refinement needed.**
- I think the proposed plan falls short by not acknowledging the trust gap and fails to address closing the trust gap.

4. Prioritization of Maintenance vs. New Amenities

- **OSWG Concern:** Public input strongly prioritized **"Maintaining and preserving existing open spaces and trails"** as the top concern. Highest funding priorities were "Existing Open Space Maintenance" (habitat restoration, wildfire prevention, erosion control) and "Existing Trail Maintenance" (removal of social trails, erosion control, vegetation trimming, wayfinding). The public called for the County to **"prioritize basic maintenance over developing new amenities"**, suggesting new amenities like bike skills parks should be on land already zoned for active recreation. "New Open Space Amenities" and "New Trailheads" received the lowest votes in the prioritization survey and should be relatively low priorities in the proposed plan..
- **Recommendations:**
 - The "Vote for future priorities" section in the Public Engagement Report (Appendix B) clearly shows that **"Existing Open Space Maintenance" (942 votes) and "Existing Trail Maintenance" (931 votes) were by far the highest priorities. No action requested.**
 - The plan dedicates "Strategies" sections to both "Open Space Maintenance & Improvements" and "Trail System Maintenance & Improvements", detailing actions such as reducing erosion, managing invasive species, wildfire mitigation, and ongoing trail maintenance. **No action requested.**
 - Appendix C, "Trail Assessments & Maintenance Needs," provides a detailed, trail-by-trail breakdown of specific maintenance issues and needs (e.g., Acid Canyon Trail needing "stormwater management structures" inspected, Barranca Crossing Trail needing rerouting due to "storm water runoff", Blue Dot Trail switchbacks damaged by hikers needing "cleared of gravel", Homestead Crossing needing "drainage" monitored). **No action requested.**
 - The "Trail Building Standards" (Appendix F) emphasize maintaining "sustainable trails" through design principles like channeling water off trails and using grade dips over water bars to prevent erosion. **No action requested.**
 - New amenities like "Bike-Specific Amenities" and "New Trails & Trail Connections" are mentioned as strategies but it is unclear in the proposed plan that these should clearly be considered lower priorities compared to taking care of what we already have. **Further refinement needed.**

5. Improved Accessibility Focus

- **OSWG Concern:** Public input, particularly from the "Accessibility Roundtable," highlighted a "big accessibility gap" and the need for more options for "beginner/differently-abled" users, clear trail information in accessible formats (braille, screen readers), safe areas for sitting, and accessible parking.
- **Recommendations:**
 - The plan includes a dedicated section titled **"Improved Accessibility for All Ages and All Abilities"**. **No action requested.**

- It lists specific needs related to accessibility, such as "Language – Access to information in other formats (braille, other languages) and screen reading technologies for online information" and "Trail difficulty – Need more options for beginner/differently-abled hikers and bikers". **No action requested.**
- Strategies include: "Produce detailed information relevant for trail users with different abilities" by partnering with PEEC and volunteers to evaluate trails using a uniform rating system (like "Disabled Hikers Spoon Trail Rating System"), and "Publish an online information hub for accessible trails with detailed trail descriptions that are designed to be used with screen readers and keyboard-only navigation". **No action requested.**
- The plan also aims to "look for additional locations where trails might be made ADA-compliant" and ensure "physical access is important, but you also have to feel like you belong/are welcome (social access)". **No action requested.**
- It explicitly states the importance of "Close parking" for accessibility. **No action requested.**
- The plan commits to working with Public Works/Transportation to "increase public transportation on weekends" to provide access to recreational opportunities for those with limited sight. **No action requested.**
- Appendix D on signage states that "All trailheads for universally accessible trails will include a symbol designating the trail as such". **No action requested.**
- Although this is a welcome discussion in the plan, the plan remains unclear about priorities. There should be no implication that every trail is a candidate to be an accessible trail, and only someone who doesn't know the trail would suggest that the Graduation Canyon Trail is a candidate, as is suggested in the plan. Craig Martin has worked on practical ideas for accessible trails and trail segments, and this work should be evaluated for incorporation into the plan. **Further refinement needed.**

6. Data and Reporting

- **OSWG Concern:** Concerns were noted about the County's effectiveness in "monitoring/reporting performance". Public perception showed a "disconnect" between the division's accomplishments and public awareness.
- **Recommendations:**
 - The plan includes a section focused on **"Data & Reporting"**, but few meaningful performance metrics are discussed in the section. The data discussed pertains more to describing "what is." **Further refinement needed.**
 - The plan explicitly states that the Parks and Open Space Division, with community advice, **"will report the status of the implementation of this plan to the County Council"**. Unless SMART (Specific, Measurable, Achievable, Relevant, Time-bound) Performance Metrics are defined in the plan, history suggests that the reports will likely be lists of activities undertaken rather than measurable accomplishments. **Further refinement needed.**

- The OSWG should be asked to develop recommendations for SMART (Specific, Measurable, Achievable, Relevant, Time-bound) Performance Metrics that could be incorporated into the County's performance dashboard. Future refinement needed.

16-7-(e)(1)d. PASSIVE OPEN SPACE SUB-ZONE (OS-PO) *formerly Seric Open Lands District W-1*

The Passive Open Space sub-zone is intended to protect the natural and scenic character of the County's wilderness areas for passive public recreation and public use, and enjoyment that have minimal effect on the land.

16-7-(e)(2) OS ZONE DISTRICTS STANDARDS (OS-PP, OS-RO, OS-AO, OS-PO)

- a. Motor vehicle use shall be restricted to movement through the zone district on designated roads or to movement on designated roads to uses allowed in the zone district.
- b. Within the OS-PP and OS-RO subdistricts, one Caretaker Unit shall be permitted for lots 30 acres to less than 400 acres in area; For every additional 200 acres over 400 acres, an additional caretaker unit shall be permitted.

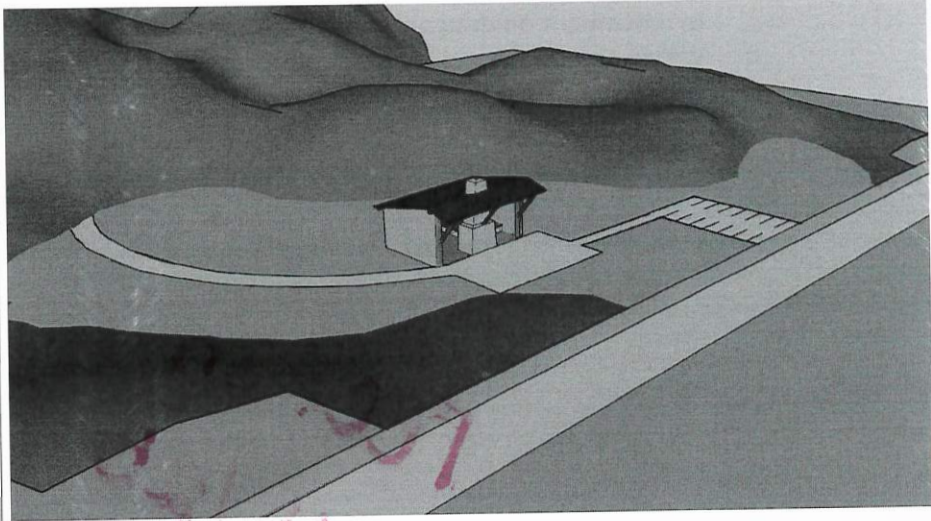
rec. on
9/11/25

16-7(e) OPEN SPACE ZONE DISTRICTS (OS)

The purpose of the Open Space (OS) zone districts is to protect the natural character of designated public parks and wilderness for a variety of intensities including public recreation, use, and enjoyment. Primary uses are open space and related recreation facilities, picnic and other shelters, and service/ maintenance facilities.

TABLE 21: OS DIMENSIONAL STANDARDS

Lot Standards		OS-PP, OS-RO, OS-AO, OS-PO
	Lot area, min	-
A	Lot width, min	-
Setbacks		
B	Front, min	20'
C	Side, min	10'
E	Rear, min	20'
Heights		
F	Primary Building Height, max	35'
Density		
	Lot coverage, max	20%



16-7-(e)(1) APPLICABILITY

The OS district includes the following 4 sub-zones, each of which has allowable uses and development standards specified in this Code as noted below.

16-7-(e)(1)a. PUBLIC PARK SUB-ZONE (OS-PP)

The Public Park sub-zone is intended to protect existing County owned or managed parks.

16-7-(e)(1)b. RECREATIONAL OPEN SPACE SUB-ZONE (OS-RO)

The Recreational Open Space sub-zone is intended to protect the County's recreational open space resources such as the Pajarito Mountain Ski Area designated for more active recreational use with limited recreation and tourism development such as recreational equipment rentals, souvenir shops, restaurants, and bars.

16-7-(e)(1)c. ACTIVE OPEN SPACE SUB-ZONE (OS-AO)

The Active Open Space sub-zone is intended to protect the natural character of the County's wilderness areas designated for active public recreation and public use, and enjoyment with limited development such as campgrounds, athletic fields, and stables.

Current Land Use Planning

For the Open Space & Trails Division, the primary land use category that is taken into consideration is Open Space Zoning which has two subtypes – active and passive. For a more detailed history of open space and land use in Los Alamos County, please see Appendix 2 in the 2015 Open Space Management Plan.

From the Los Alamos County Development Code, Section 16:

Definition for Scenic Open Lands District W-1 (passive): The W-1 scenic open lands district is intended to maintain, protect and preserve the scenic and environmental quality, open character and the natural recreational value of undeveloped land.

Typical activities and structures that are permitted on open space are: Hiking, Running, Mountain biking, Dog walking, Equestrian, Rock climbing, Off-trail exploring on foot, Orienteering, Geocaching, Flood control, Nature study, Wildlife habitat improvements, Existing infrastructure, and Future infrastructure improvements with a restoration component.

Definition for Recreation Wilderness District W-2 (active): The W-2 recreation wilderness district is intended maintain, protect and preserve the scenic and environmental quality, open character, and natural recreational value of undeveloped lands; and to accommodate public and private recreational uses of an open nature.

W-2 lands are developed to accommodate outdoor recreation activities and public infrastructure such as team sports, dog training, walking and jogging, children's playgrounds, picnicking, stabling domestic animals, and other forms of active and passive recreation. Included in this classification are parks, golf courses, playgrounds, tot lots, shooting ranges, and hard-surfaced pathways: Playlots, Stables, Public parks, Golf courses, Multi-use trails, Athletic fields, Dog parks, Campgrounds, Nature centers, Ski areas, and Parking associated with recreational use.

For land use reference maps, please see Map 13 on pg. 46.

rec
9/11/12

Corrections to the Open Space plan

From Craig Martin [REDACTED]
Date Fri 9/12/2025 2:14 PM
To Vaupel, McKenzie <mckenzie.vaupel@losalamosnm.gov>

CAUTION: This email originated from outside of the organization. Do not click links or open attachments unless you recognize the sender and know the content is safe.

Hi, McKenzie,

After page 47, the page numbering starts again at page 36.

On page 8, Current Land Use Planning, inside the left box:

Definition for Scenic Open Lands District W-1 (passive): The W-1 scenic open lands district is intended to maintain, protect and preserve the scenic and environmental quality, open character and the natural recreational value of undeveloped land.

Should be replaced with:

PASSIVE OPEN SPACE SUB-ZONE (OS-PO) The Passive Open Space sub-zone is intended to protect the natural and scenic character of the County's wilderness areas for passive public recreation and public use, and enjoyment that have minimal effect on the land.

The text in the right box:

Definition for Recreation Wilderness District W-2 (active): The W-2 recreation wilderness district is intended maintain, protect and preserve the scenic and environmental quality, open character, and natural recreational value of undeveloped lands; and to accommodate public and private recreational uses of an open nature.

Should be replaced with:

ACTIVE OPEN SPACE SUB-ZONE (OS-AO) The Active Open Space sub-zone is intended to protect the natural character of the County's wilderness areas designated for active public recreation and public use, and enjoyment with limited development such as campgrounds, athletic fields, and stables.

My last change is a suggestion that you should run by eric and Wendy:

page 44 (the second page 44) under Open Space administration:

Current language: While engaging citizens, the Parks and Open Space Division will update the county development code and develop necessary county laws and zoning regulations that support and protect trails, trail access, and natural and cultural resources within trail corridors.

Suggested language:

While engaging citizens, the Parks and Open Space Division will champion updates to the county development code and work with the Community Development Department to develop necessary county laws and zoning regulations that support and protect trails, trail access, and natural and cultural resources within trail corridors.

Craig Martin
3100 Arizona Avenue
Los Alamos, NM 87544
bikeandhikenm@gmail.com

Date	Name	Addressed?	Comment
8-Aug	Craig M.	Noted by consultant as an area for growth in future planning processes.	Overall, I believe more transparency about the plan during its development would have been helpful, particularly for the Open Space Working Group. The last meeting with the group was a repeat of the public meeting held shortly before and did not provide any details about the plan. I think this created a lot of unnecessary tension between the public and Community Services.
8-Aug	Craig M.	Previous language is replaced with "with advice from the community" which is more inclusive than "advice from the Parks & Recreation Board, and its subcommittees"	I am dismayed at the substitution of the words "...the Parks and Open Space Division, with advice from the public" for the words "...with input from the public" in several places in the document. As should be clear, open space and trails are a valuable shared community asset to a majority of residents, not simply a facility to be managed with input from the users.
8-Aug	Craig M.	Add strategy "Update and implement the Invasive Species Plan created in XXX"	The lack of mention of control of invasive species on open space is a glaring omission to the strategies to effectively protect natural resources.
8-Aug	Craig M.	Recommendation included.	Open Space Management and Improvements: Strategy 2 should be expanded to include all trash in all open space, perhaps singling out Overlook Park but not making it the exclusive focus.
8-Aug	Craig M.	Recommendation included.	Cultural & Historical Resources Protection: Please include a bullet on the protection of historic trails, particularly those listed on the
8-Aug	Craig M.	Added to definitions page.	Under Wildfire Mitigation, there are no definitions of the "Management Unit," which leaves the reader puzzled about where these strategies should be implemented. Also, there is no mention of working with the Los Alamos Fire Department or assisting with the continued revision and implementation of the Community Wildfire Protection Plan.
8-Aug	Craig M.	Staff assistance needed - 2013 Community Trail plan mentions "Sign a loop return via paved trail/canyon connection to overlook park." This also included on a map, but not very clear.	Trail Strategies, Location Specific, Support and advocate for a White Rock Loop (WZ-1)—this should be defined, I have no idea what this is about.
8-Aug	Craig M.	Change to: Continue to maintain and improve trail conditions on Deer Trap Mesa	Trail Strategies, Location Specific, Expand Trail Opportunities on Deer Trap Meas—I think this has been done and the area should be left as is.
8-Aug	Craig M.	Rephrased: "Repair River Trail without detracting from a quality backcountry experience"	Trail Strategies, Location Specific, Repair River Trail by providing quality backcountry experience, though there are maintenance opportunities. I don't know what this means.

8-Aug	Craig M.	Los Alamos County Parks and Open Space will continue to coordinate with County Council's Accessibility Task Force on projects that include accessible projects and upgrades.	Improved Accessibility: There is no mention of coordinating with the Council's Accessibility Task Force, but otherwise this section is a great addition to the plan.
8-Aug	Craig M.	Title fixed.	Data and Reporting: Bullet: The Parks and Recreation Board and the Parks and Open Space Division will review and recommend updates of the Open Space and Trails Consolidated Management Plan to the County Council. What is the Open Space and Trails Consolidated Management Plan? This is the first time this title has appeared.
8-Aug	Craig M.	Reviewed Appendix A. No mention of subcommittees.	Appendix A has many outdated references that should be updated, The Parks and Recreation Board no longer has subcommittees.
8-Aug	Craig M.	Reviewed Appendix F. No duplicate pages.	Many pages in Appendix F are duplicated.
8-Aug	Craig M.	Los Alamos County Parks and Open Space is in the process of modifying and updated the proposed Adopt-a-trail program.	The section of Appendix F should be updated to reflect the current status of the division and to reflect a possible Adopt-a-Trail program proposed by the Open Space Working Group.
9-Aug	Una S.	Fixed.	Page 20 the map is a duplicate of the map on page 21; the correct map of parcels within 0.5 miles of a trail is missing. Compare page 22 maps of White Rock.
9-Aug	Una S.	Removed "Small covered arena"	Page 25 re equestrian facilities I am mystified by the mention of a small covered arena in addition to the large indoor arena. Does this refer to the stands, or is it brand new since I was last there a few weeks ago and I haven't heard a thing about it?
9-Aug	Una S.	Added.	There is no mention that Kwage Trailhead has transient pens where overnight horse camping is permitted. If possible mention this.
9-Aug	Una S.	Added.	Split out as a separate bullet point that trailers are permitted at all trailheads but some trailhead parking areas are too small for safe trailer ingress/egress/parking/unloading.
9-Aug	Una S.	Added.	Unloading onto pavement from step-down trailers can cause injury to horses wearing metal shoes due to slipping.
9-Aug	Una S.	Previous planning effort - not the scope of this effort.	Appendix C page 21 as a field researcher and occasional trail builder communicating with others I have found it helps to refer to smooth rounded stones are river rocks or cobbles and either reserve "gravel" for angular rocks or don't use the word gravel at all. River gravel is not all round; on very young mountains it is extremely angular. Focus on the key detail: smooth, slippery vs rough, grippy.

13-Aug	Celeste	Previous planning effort - not the scope of this effort.	Page 3 Plan Purpose and goals: "trail network will take advantage of the Natural Beauty of Los Alamos to enhance downtown area" Huh? this makes really no sense as trail network involves whole town, not just downtown, would strike this sentence.
13-Aug	Celeste	Not the purview of this planning effort.	Page 8 Need better definitions of passive vs active open space. There really is no discernable difference between Open Lands District W-1 (passive) and Recreation Wilderness district W-2. The blue boxes provide clarity BUT we have no idea how these blue addendums came about Since the surveys clearly showed that OPEN SPACE is a priority for the respondents, I feel that this needs serious work. Also open space management is entirely sidestepped in this report. <u>NEEDS CLARITY AND WORK</u>
13-Aug	Celeste	As stated, the analysis is accurate.	Page 9 This population growth conclusion is very wonky. If you look at your chart, population in 2000 was 18,300 (or so) in 2006 was 18,500. Then there was a population drop. Then you look at 2013 to 2023to infer that our population is growing at a stupendous rate. In fact, historically in Los Alamos population has fluctuated fairly widely, (as demonstrated in your figure) need to rework this
13-Aug	Celeste	Added definition to pg. 20.	Page 20-21 really don't understand what you mean by parcels, this should be defined and also significance explained
13-Aug	Celeste	Added to definitions page.	page 23 "management units" pop up in you chart but there is no previous definition of what management units are. this should be defined and probably a map with the units delineated inserted here. Also your issues in each unit I feel are not accurate. Pretty much any place in Los Alamos qualifies as a wildlife corridor (just look at all the postings of bobcats, deer, bear, mountain lions, and grey fox on face book every week). Also erosion and stormwater issues certainly are an issue on western perimeter and white rock, and there is no way white rock should be left out of fire management.
13-Aug	Celeste	These were as listed on the LAC website.	Page 25 Open Space features second bullet "vistas and viewpoints": as pretty much anywhere in Los alamos open space offers incredible vistas and viewpoints I would just cut off "Anderson overlook, Sierra, de Los Valles, lower canyons"
13-Aug	Celeste	Have not received this feedback throughout the planning process.	page 26 very hard to read this map, would use better contrasting colors (not just shades of green) to delineate between park, active, and passive open space
13-Aug	Celeste	This is table includes previous plan content analysis, not public comment as received through this process.	page 29 I am very surprised to see protect open space ranked as a 2 when open space management is given highest priority on page 36. This needs to be reconciled
13-Aug	Celeste	These are two different phenomenon - mentioning impermeable surfaces was on purpose based on public comments.	page 34 on top right of chart: "runoff/erosion due to impermeable surfaces" maybe this should be "due to poor trail design"
13-Aug	Celeste		page 35 again note that "existing open space maintenance" was given the highest priority by respondents, but is really down on in the plan

13-Aug	Celeste	There is an explanation of methodology and "how to use this tool" on the page ahead of the table.	page 39 -42 Trail vulnerability defined. After reading this section several times I can truthfully say I have NO idea what your are talking about, ditto trail vulnerability index and type score. If you are going to go to all the trouble if devoting several pages to this you really need to better describe and explain this, and NOT just refer to the 2022 trail plan Finally you talk about the implementation time line, but honestly i have no idea what your implementing.
13-Aug	Celeste	Incorporated.	page 45 poor word choice. Should read "improved a quarter mile of existing trail making the area ADA-accessible by resurfacing with crusher fines and"
13-Aug	Celeste	ADA improvements would be considered on the utility road and not the single-track trails.	<p>page 46 Potential ADA accessible trails</p> <ol style="list-style-type: none"> 1. Kwage Mesa Trail NOOOOOO, this is a well loved, heavily used trail by hikers, mountain bikers, and horses. The curves, obstacles , and grooves in the trail provide some of if not the best beginner mountain biker terrain in the county.. To destroy this to make it wide, smooth and ADA accessible trail would be a crime and really upset the bikers, hikers, and equestrians. 2. Kwage Mesa Utility road, on the flip side this would be a terrific ADA trail. 3. Graduation Trail: Absolutely NOT. you clearly have not hiked this trail if you think it has potential for an ADA accessible trail. The first hundred yards or so scale down a cliff side, and it is challenging for able bodied hikers. But it is a very popular trail so please leave it as it is.
13-Aug	Celeste	Fixed.	Page 46 PAGE discrepancy: at page 46 the next page is 36, and then progresses sequentially back to page 46 again. needs to be renumbered
13-Aug	Celeste	This wording is standardized throughout the plan.	Page 43 (new page 43 see above) please reword this to "Parks and Recreation Board and its working groups, ALONG with input from community members"
13-Aug	Celeste	Added to definitions page.	page 46 (new page 46) again would be very helpful to have a page defining "management units". perhaps earlier as mentioned or referenced in an appendix.
13-Aug	Celeste	Los Alamos County does not authorize the use of paint as a wayfinding tool. Los Alamos Couty Open Space will continue to follow the signage standards.	page 56 signage guidelines: Red and Blue dot trails: very difficult to place signs in this area as it is basically all Lava rock. The red and blue dots are part of the town culture and provide effective trail marking. Possibly the placement of the dots could be improved but hate to see this eradicated and i believe it would really upset the locals.
13-Aug	Staff	Fixed.	Page 20-21- Duplicate Maps- Same map on both on pages
13-Aug	Staff	Fixed.	<p>Page 25- Please change to, "Facilities include stables, a large indoor arena, an outdoor dressage arena, jump arena, round pens and rodeo grounds";</p> <p>Please change to, "Horse trailers are permitted at all trailheads but some trailhead parking areas are too small for safe trailer ingress, egress, parking and unloading."</p>

13-Aug	Staff	Fixed.	Page 30- Piedra Loop to Sherwood is listed as in LA (Los Alamos) – This trail is located in White Rock (WR)
13-Aug	Staff	Fixed.	Page 32- Please add to groups represented- Los Alamos Stable Owners Association and the Equine and Livestock Working Group.
13-Aug	Staff	Fixed.	Page 38- Please add to Definitions - Management Unit: Ecologically based management units that summarizes current conditions and past management activities in each unit
13-Aug	Staff	Fixed.	Page 46- Western Perimeter Management Unit - Please change historic stem densities to heathy stem densities.
13-Aug	Staff	Fixed.	Page 55- For consistency please change the Kinnikinnik Park Loop Trail to Kinnikinnik Park Trail.
13-Aug	Staff	Fixed.	Please change the description to, "The Kinnikinnik Park accessible trail was funded by New Mexico Outdoor Recreation Trails+ Grant program that improved a quarter mile of existing trail making the area ADA-accessible by resurfacing with crusher fines and..."
13-Aug	Staff	Fixed.	Please remove Graduation Canyon Trail as a potential ADA trail - the terrain is not conducive for an accessible trail and would require significant alteration of the landscape.
13-Aug	Staff	Fixed.	Pg 56 – Signage Strategies - mentions the "Diamond Fill Trailhead (proposed). Please delete - I couldn't find any information regarding this proposed trailhead nor do I know where this location is.
5-Aug	Janet	Not the purview of this planning effort.	Page 8 Definition for Recreation Wilderness District W-2 (active): This is confusing – wilderness = undeveloped. Golf courses, tot lots, ski areas, playgrounds, shooting ranges are included under W-2?!?!
5-Aug	Janet	When analyzing the Los Alamos County Trail network by user type and trail type, it becomes clear that the system has more trails for hikers than bikers and skews towards more difficult trails, with only 19% of bike trails and 39% of hiking trails ranked as easy, and many of these trails have challenging sections.	Page 19 "When analyzing the Los Alamos County Trail network by user type and trail type, it becomes clear that the system has more trails for hikers than bikers and skews towards more difficult trails with only 19% of bike trails and 39% of hiking trails ranked as easy." This is a misleading statement. I am concerned the intent is to provide justification for "dumbing down" trails for the bicyclists wanting a smooth, easy ride. You must take all users into account; numerous bicyclists, hikers and trail runners in this community are actively seeking challenging conditions. A better way to describe the trail system is to acknowledge that many trials have "difficult" or challenging sections.
5-Aug	Janet	No action requested.	Pg 44 - "Guiding Principles" for Open Space Maintenance & Improvements explicitly state that "Every effort will be made to balance use and accessibility with conservation and protection of cultural, historical, and natural resources" and to "Provide effective environmental stewardship". If adhered to, this could address the public's desire for balanced management and conservation.

5-Aug	Janet	Not the purview of this planning effort.	<p>Pg 44 - Strategies for Open Space Administration - The proposed plan states: "While engaging citizens, the Parks and Open Space Division will update the county development code and develop necessary county laws and zoning regulations that support and protect trails, trail access, and natural and cultural resources within trail corridors".</p> <p>This is quite broad and does not clearly address the concerns expressed.</p> <p>The input about making it difficult to rezone passive open space didn't appear to be addressed.</p>
5-Aug	Janet	Graduation Canyon removed.	<p>Page 46 of the plan lists Graduation Canyon Trail as a Potential Accessible Trail</p> <p>I completely disagree - the access through Pine St playlot is very steep - making it accessible would require a huge amount of work/destruction of the upper section of Graduation Canyon. Also, the work required to widen and flatten the narrow trail would disrupt an area that underwent restoration. Not to mention the cost.</p> <p>Kwage Mesa Utilities road is a reasonable option as well as trail along Overlook Rd.</p>
5-Aug	Janet	Further refinement needed.	<p>Public input strongly prioritized "Maintaining and preserving existing open spaces and trails" as the top concern. The public called for the County to "prioritize basic maintenance over developing new amenities", suggesting new amenities should be on land already zoned for active recreation.</p> <p>"New Open Space Amenities" and "New Trailheads" received the lowest votes in the prioritization survey and should be relatively low priorities in the proposed plan.</p> <p>New amenities like "Bike-Specific Amenities" and "New Trails & Trail Connections" are mentioned as strategies but it is unclear in the proposed plan that these should clearly be considered lower priorities compared to taking care of what we already have.</p>
5-Aug	Kevin Holsapple	Please see other document	

Received 9/11/16
mv

TO: Parks and Recreation Board

FROM: Equine and Livestock Working Group

RE: September, 2025 Report

Task 1: Recruiting efforts continue but have had limited success. Two reasons mentioned were a feeling that the work of this working group does not seem to have an effect, and the timing of meetings is not convenient. ELWG is exploring other meeting time options.

Task 2: Brewer Arena - It is our understanding that the plan for the Brewer Arena upgrades have been included in an existing contract as a task order. Despite requests, those plans have not been provided to ELWG. We hope that they will be provided to PRB.

Task 3: ELWG reported that registering online for the gymkhana or horse show is not possible. ELWG also provided suggestions on horse show classes. If the goal of the county is to increase participation in the gymkhanas and horse show, the information needs broader dissemination, and easier registration.

Task 4: ELWG gave updates and edits to Rec Trac/WebTrac. The website has not been updated and is still not accurate.

Task 5: ELWG gave input to the Open Space and Trails Master Plan, and suggestions for the North Mesa Picnic Master Plan. The North Mesa Recreation Area Turf Realignment and Framework Plan has not come before ELWG, but does not include any safe bridle path or equine trail along North Mesa Road. A bridle path suitable for horses to access the round-about and Bayo Canyon in the winter when the YCC trail and waterboard trail is not usable should be considered in this plan.

Task 6: ELWG proposed a clarification on the fees for Stable Lots on North Mesa on form 1735. The PRB voted unanimously to adopt the clarification and additional changes were made at county council meeting.

Respectfully Submitted,

ELWG Members,

Jerry Cowan (PRB), Lisa Reader, Wendy Burke Ryan, Donna Hayden, Diane Wiburn, and Cathy Miller