



Los Alamos Airport

Reconnecting a Community Resource

A Plan to Expand Access, Enhance Use, and Rebuild Civic Connection

Presentation to the County Council

July 15, 2025

Airport Manager – Gary Goddard

About Me

- BA in Cultural Anthropology
- Worked in architecture, art and design for 25 years
- MS in Renewable Energy Systems engineering
- Building Automation Systems engineer at LANL for 14 years
- Pilot - Certification in 2019, member of Pajarito Flying Club





Background and Highlights

- Built by Atomic Energy Commission in 1947 to serve LANL
 - “Military mid-century design” terminal building
- In October 1996, Los Alamos County assumed operating control of the airport from DOE
- Development costs supported by NM DOT and FAA grants:
 - Newly built fuel farm with jet fuel
 - New hangar construction – 2025 - 2026
- Currently 50 based aircraft, 3500 operations/year
- Commercial flights periodically up until 2016
- Rental Car Concession until 2019

A Challenging Airport



- High altitude
- Turbulent crosswinds – many unflyable days
- One way in/one way out
- Restricted area to south (LANL)

2006



2014



2017

Note:
Commercial
Service ceased in
2016



2023





Challenges to Aviation in Los Alamos

Loss of Flying Club

The absence of an entry point for new pilots has significantly reduced community interest in aviation

Maintenance Gap

The loss of our on-field mechanic creates logistical challenges for aircraft owners

Limited Services

Neighboring facilities offer more amenities: FBO, car rentals, commercial air service

No Aircraft Rentals

Lack of rental planes and primary training options prevents new pilot development

Increasing Cost of Aviation

Costs of the certification process and airplane ownership are steadily increasing

Aging Pilot Demographics

Our pilot community is growing older without sufficient younger replacements

Airport: Essential Infrastructure

Current Services and Stakeholders:



Firefighting Support Operations

Providing critical infrastructure for forest fire response and wildland management



Medical Operations

Supporting Classic air medical transport services for emergency response



Educational Programs

Hosting Experimental Aircraft Association and Civil Air Patrol youth initiatives



Tourism Development Opportunity

Partnering with New Mexico Pilot Association to promote Los Alamos as a destination



County Transportation Asset

Serving as an access gateway to Los Alamos and surrounding areas



How can the County help reverse the trend?



Limitations

Limited funding sources for non-essential improvements

Constrained by FAA regulations and requirements

Geographic and space restrictions of current site



Capabilities

Leverage public-private partnerships for development

Encourage local development ideas

Implement Airport Master Plan - using FAA and NMDOT Grants

Implement phased improvement approach aligned with budget cycles

Attachment A



Strategic Opportunities

Recognize LAM as LA gateway

Coordinate with regional tourism initiatives

Develop sustainability showcase features

Community Engagement Initiatives

Special Events



Host an annual Airport Open House showcasing local aviation, seasonal Santa Fly-in for family engagement, and support regular EAA Young Eagles flights and workshops introducing youth to aviation

Facility Utilization



Offer terminal use for local events, repurpose incinerator building for community projects, and develop branded merchandise promoting airport identity

Airport Partner Organizations



Attachment A



Tourism Gateway Development



Local Art Showcase

Feature a curated gallery of aerial photography and rotating local art and historical artifacts.



Interactive Visitor Kiosk

Design an interactive touch-screen terminal to guide visitors to nearby backcountry airstrips, hiking trails, and regional outdoor adventures. Provide real-time trail maps, seasonal activity updates, and connections to aviation destinations—creating a seamless gateway from air travel to skiing, biking, and wilderness exploration.

Terminal Interior Enhancement



Lighting Modernization

Replace outdated fluorescent fixtures with energy-efficient mid-century LED pendant lighting



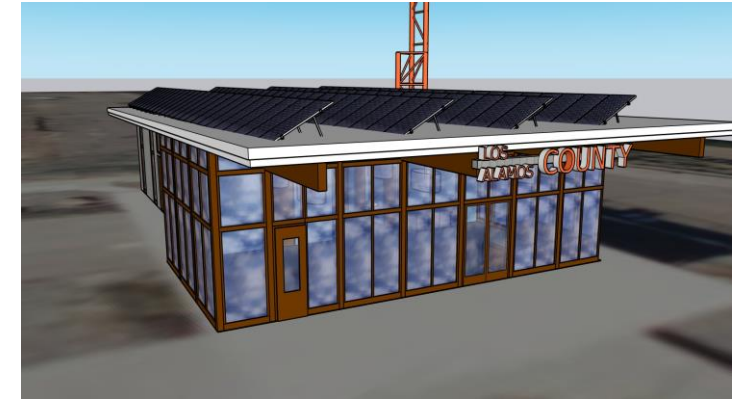
Utility Improvements

Install kitchenette and utility sink for visitor and staff convenience



Access Control and Entry Upgrade

Implement energy efficient entry and smart locks for secure facility management



NM's First Net-Zero Airport?

Demonstrate that net zero can be done even in a 1947 building. Add solar panels, replace gas heating with heat pump, add modern controls.

Airport Revenue Streams and Opportunities



\$100K

New Fuel Farm Sales

Annual revenue from Jet A and 100LL fuel providing steady income from both local and transient aircraft operations.



\$80K

Hangar Leases

Yearly revenue from T-hangars and ground leases that directly supports ongoing maintenance of airport facilities.



\$1.5K

Branded Merchandise

Growing revenue stream that builds airport identity, encourages local pride, and provides support for special events.



\$100K

Rental Car Potential

Projected annual revenue from implementing rental car concession to serve LANL visitors, pilots, and tourists.

Completing the Airport Master Plan

Airfield Infrastructure Development

Planning Phase - Now

Finalizing the contract for T-hangar construction

Taxiway F Development - Design Phase – 2025/2026

Demo existing hangars on west side; Design new road access and west area development

T-Hangar Construction – Fall '25- Spring '26

Build new T-hangar facilities to accommodate based aircraft

Taxiway F Development – Construction Phase - Summer 2027

Construct new access road, commercial box hangars and rental T-hangars

Questions?

