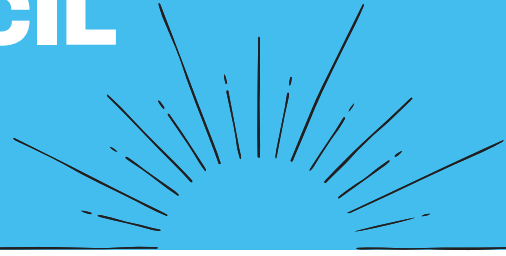


# LOS ALAMOS COUNTY HEALTH COUNCIL FACT SHEET



<b>Mission</b>	Provide assessments, information, and recommendations regarding community health matters to the Los Alamos County Council and community members.
<b>Vision</b>	A community where all members can achieve health and wellness through knowledge of and equitable access to physical and behavioral health resources.
<b>Role</b>	Serves in an advisory role to Los Alamos County Council, and in an advocacy role for the health of the community.

## HIGHLIGHTS

- The LACHC works to identify existing resources as well as emerging gaps and needs in order to strengthen the network of available health supports for Los Alamos County.
- The Interim Comprehensive Health Plan report and Action Plan were completed in March 2024, based on more than 200 interviews with community members and a compilation of local, state, and national datasets. The final report will be issued in late fall 2024, upon completion of a community-wide health survey and analysis. This report will help the County develop and sustain equitable and accessible health resources for the next 5-7 years.
- We are beginning to implement a closed loop referral system, to better support clients in need and the service providers in the community. This will provide us with much more robust data in order to develop better programs and services to meet community needs

## CHALLENGES

- Coordinating the various health needs across a diverse population, with limited availability at some providers, especially mental health / substance use, and some specialists
- Meeting the needs of diverse populations, from youth to young adults to older adults

## PRIORITY INTEREST AREAS:

- BabyNet: Supports the development of healthy, resilient, connected, and joyful families, expectant through early childhood.
- Older Adult Network: Focuses on services and resources for the County's senior population.
- Youth Resiliency: Focuses on developing resources and addressing the mental wellness and resiliency concerns of young people in our community
- Special Projects: Responding to community needs as they arise, such as suicide prevention and opioid overdose prevention

## COUNCIL MEMBERS

Chair: Lori Padilla	Celeste Raffin
Jenn Bartram	Joyce Richins
Lisa Hampton	Lindsay Smith
Gisel Martinez	Open Seats: 4
Mary Abigail (Abbie) Nelson, Vice-Chair	County Council Liaison: Keith Lepsch
Morris Pongratz	Social Services staff: Jessica Strong
Jyl DeHaven	Leticia Martinez



**LOS ALAMOS**  
where discoveries are made

**1183 Diamond Drive Suite E, Los Alamos, NM 87544**  
**505.662.8068** **lachc@lacnm.us**

Updated May 4, 2023